

**ALL PRODUCTS**



**COOK**

<b>Centrifugal Roof &amp; Wall Exhausters</b> ACED, ACEB, ACRUD, ACRUB, ACRUD-HP, ACRUB-HP, ACRUD-XP, ACRUB-XP, ACWD, ACWB, ACWD-HP, ACWB-HP, ACWD-XP, ACWB-XP, ACSC, ACSC-HP, ACSC-XP, VCRD, VCR, VCRD-HP, VCR-HP, VCRD-XP & VCR-XP	2
<b>Centrifugal Roof Exhausters</b> (Including low profile versions) FCE, FCRU, SRSBD, SRSBH, LPD, LPB, HLC-D, HLC-B, TLC-D, TLC-B, TLCH-D & TLCH-B	3
<b>Ceiling, Wall &amp; Duct Transfer Fans</b> GC, GN, DB, DBX, TDB, SDB, CBF & Air Curtain	4
<b>Propeller Wall Fans</b> XWD, XWHD, XLW, XMW, XLWH, XMWH, AWD, AWB, EWD, EWB, XPD, XPHD, XLP, XMP, XLPH, XMPH, APD, APB, EPD & EPB	5
<b>Centrifugal &amp; Centri-Vane® Inline Blowers</b> SQN-D, SQN-B, SQN-HP, SQI-D, SQI-B, TCN-D, TCNH-D, TCN-B, TCNH-B, CVD, CVB, CV-S & CIC	6
<b>Mixed-Flow Inline Blowers</b> QMXD, QMXD-HP, QMXD-XP, QMX, QMX-HP & QMX-XP	7
<b>Roof Mounted Blowers</b> QMXU, QMXU-HP, QMXU-XP, QMXE, QMXS, UCV, CVR, CVR-S & UCIC	8
<b>Propeller Upblast Fans &amp; Curbs</b> LXUL, LXUM, LTU, TUD, TUB, TUBSC, LEU, EUD, EUB, AUD, AUB, RCG & RCA	9
<b>Propeller / Tube Axial Inline Fans</b> TID, TIB, ADD, ADB EDD, EDB VAD, VAB, VAHB, AVAD, AVAB, AFD-C, AFDV-C, AFB-C, AFBV-C, AFB-S, AFBV-S, AFB-H & AFBV-H	10
<b>Propeller Roof Fans</b> AQD, AQB, SEP, ETE, ETS, REBEL, HEE-D, HES-D, HEF-D, HER-D, HEE, HES, HEF, HER, HXE, HXS, HXF, MRS-D, MRSE-D & MRSF-D	11
<b>Centrifugal Utility Vent Sets</b> CPV, CPS, CPA, CPS-A, CPA-A, CPFD, CPFB, CPFD & FCP	12
<b>Industrial Blowers, Plug &amp; Plenum Fans</b> CA SWSI, CF SWSI, CA-4 SWSI, CA-4 SWSI, CA DWDI, CAF-DW, CA-4 DWDI, MH, MHB, MHA, MHR, CCP-A, CCP-F, PLC & PLC-D	13
<b>Lab Exhaust Systems</b> TCNHB-LE, CPS-LE, QMXLE, CA-VP, QMX-VP, PP & LEC	14
<b>Supply Fans, Energy Recovery, Heated Makeup &amp; Gravity Vents</b> KSPD, KSPB, ASP, ASP-T, ASPTH, CFS, ERV, HMD, PR, TR, TRE, GI, GR & LSUG	15
<b>Air Circulator Fans</b> CAC-ACH, CAC-ACHO, CAC-IHPWD, CAC-PBD, CAC-PBD, CAC-MBDY, CAC-SBD & CAC-UTE	16
<b>UL Listings</b>	17
<b>Optional Hurricane Rated Construction</b>	18-19
<b>Seismic Rating</b>	20



## AC Catalog

## Downblast

**ACE**

Static Pressure: 0 - 1.5"

**Direct Drive (ACED)**

- Wheel Sizes: 7 - 18"
- Capacity: 80 - 4,200 CFM

**Direct Drive EC (ACED-EC)**

- Wheel Sizes: 7 - 15"
- Capacity: 70 - 2,600 CFM

**Belt Drive (ACEB)**

- Wheel Sizes: 10 - 54"
- Capacity: 50 - 32,000 CFM

## Wall

**ACW****Standard Wheel:**

Static Pressure: 0 - 1.5"

**Direct Drive (ACWD)**

- Wheel Sizes: 7 - 18"
- Capacity: 60 - 4,300 CFM

**Direct Drive EC (ACWD-EC)**

- Wheel Sizes: 7 - 15"
- Capacity: 80 - 2,500 CFM

**Belt Drive (ACWB)**

- Wheel Sizes: 10 - 24.5"
- Capacity: 280 - 8,200 CFM

## Upblast

**ACRU****Standard Wheel:**

Static Pressure: 0 - 1.5"

**Direct Drive (ACRUD)**

- Wheel Sizes: 7 - 18"
- Capacity: 60 - 4,300 CFM

**Direct Drive EC (ACRUD-EC)**

- Wheel Sizes: 7 - 15"
- Capacity: 80 - 2,500 CFM

**Belt Drive (ACRU)**

- Wheel Sizes: 10 - 49"
- Capacity: 280 - 28,000 CFM
- Static Pressure: 0 - 1.5"

## Smoke Control Upblast

**ACSC (ACSC, ACSC-HP & ACSC-XP)**

These have the same availability & performance as the ACRU, ACRU-HP & ACRU-XP.

## Special features for products on this page

All sizes are available on Express, Cook's 24-hour shipping program.

## High Wind (Miami-Dade) Tested

Products	Sizes
ACEB	60-300
ACED	70-180
ACRUB series	100-300
ACRUD series	70-195
ACSC series	100-300
VCRD series	100-195
VCR series	100-300

\* See page 17 for details

## Seismic (OSHPD) Tested

Products	Sizes
ACRU series	Up to 490
ACW series	
ACSC series	
VCR series	

UL "Power Ventilator for Smoke Control Systems" ACSC series

UL 762 Grease Laden Air Restaurant Exhaust \* VCR series & VCRD series

"Direct Drive EC" is an electronically commutated motor.

**High Pressure Wheel:****Direct Drive (ACWD-HP)**

- Wheel Size: 15 - 19.5"
- Capacity: 570 - 3,700 CFM
- Static Pressure: 0.125 - 1.75"

**Direct Drive EC (ACWDEC-HP)**

- Wheel Sizes: 15"
- Capacity: 360 - 1,600 CFM
- Static Pressure: 0 - 1.5"

**Belt Drive (ACWB-HP)**

- Wheel Sizes: 15 - 36.5"
- Capacity: 340 - 19,000 CFM
- Static Pressure: 0.25 - 2.5"

**Extended Pressure Wheel:****Direct Drive (ACWD-XP)**

- Wheel Sizes: 16.5 - 19.5"
- Capacity: 520 - 2,200 CFM
- Static Pressure: 0.125 - 1.75"

**Direct Drive EC (ACWDEC-XP)**

- Wheel Sizes: 16.5 - 18"
- Capacity: 350 - 1,900 CFM
- Static Pressure: 0 - 1.5"

**Belt Drive (ACWB-XP)**

- Wheel Sizes: 16.5 - 24.5"
- Capacity: 520 - 4,500 CFM
- Static Pressure: 1 - 4.5"

**High Pressure Wheel:****Direct Drive (ACRUD-HP)**

- Wheel Sizes: 15 - 19.5"
- Capacity: 580 - 3,700 CFM
- Static Pressure: 0.25 - 1.75"

**Direct Drive EC (ACRUDEC-HP)**

- Wheel Sizes: 15"
- Capacity: 360 - 1,600 CFM
- Static Pressure: 0 - 1.5"

**Belt Drive (ACRU-HP)**

- Wheel Size: 15 - 36.5"
- Capacity: 340 - 19,000 CFM
- Static Pressure: 0.25 - 2.5"

**Extended Pressure Wheel:****Direct Drive (ACRUD-XP)**

- Wheel Sizes: 16.5 - 19.5"
- Capacity: 520 - 2,200 CFM
- Static Pressure: 0.125 - 1.75"

**Direct Drive EC (ACRUDEC-XP)**

- Wheel Sizes: 16.5 - 18"
- Capacity: 350 - 1,900 CFM
- Static Pressure: 0 - 1.5"

**Belt Drive (ACRU-XP)**

- Wheel Size: 16.5 - 36.5"
- Capacity: 520 - 11,000 CFM
- Static Pressure: 1 - 4.5"

## VCR Catalog

## Restaurant Upblast

**VCR****Standard Wheel:**

Static Pressure: 0 - 1.5"

**Direct Drive (VCRD)**

- Wheel Sizes: 10.1 - 18"
- Capacity: 400 - 4,300 CFM

**Direct Drive (VCRD-EC)**

- Wheel Sizes: 10.1 - 15"
- Capacity: 260 - 2,500 CFM

**Belt Drive (VCR)**

- Wheel Sizes: 10 - 49"
- Capacity: 280 - 28,000 CFM

**High Pressure Wheel:****Direct Drive (VCRD-HP)**

- Wheel Sizes: 15 - 19.5"
- Capacity: 580 - 3,700 CFM
- Static Pressure: 0.125 - 1.75"

**Direct Drive (VCRDEC-HP)**

- Wheel Sizes: 15"
- Capacity: 360 - 1,600 CFM
- Static Pressure: 0 - 1.5"

**Belt Drive (VCR-HP)**

- Wheel Sizes: 15 - 36.5"
- Capacity: 340 - 19,000 CFM
- Static Pressure: 0.25 - 2.5"

**Extended Pressure Wheel:****Direct Drive (VCRD-XP)**

- Wheel Sizes: 16.5 - 19.5"
- Capacity: 520 - 2,200 CFM
- Static Pressure: 0.12 - 1.75"

**Direct Drive (VCRDEC-XP)**

- Wheel Sizes: 16.5 - 18"
- Capacity: 350 - 1,900 CFM
- Static Pressure: 0 - 1.5"

**Belt Drive (VCR-XP)**

- Wheel Sizes: 16.5 - 36.5"
- Capacity: 520 - 11,000 CFM
- Static Pressure: 1 - 4.5"

## SRSH Catalog

### Tamper Resistant Downblast



#### SRSH

Static Pressure: 0 - 1.5"

#### Direct Drive (SRSHD)

- Wheel Sizes: 10 - 18"
- Capacity: 30 - 7,000 CFM

#### Belt Drive (SRSHB)

- Wheel Size: 10 - 27"
- Capacity: 30 - 10,000 CFM

### Special features for products on this page

#### High Wind (Miami-Dade) Tested

Products	Sizes
TLCH-D series	70-180
TLCH-B series	100-365

UL 762 Grease Laden Air  
Restaurant Exhaust \*

LPD / LPB

UL "Power Ventilator for  
Smoke Control Systems" \*

LPB

\* See page 17 for details

## Fiberglass Catalog

### Fiberglass



#### FCE (Downblast)

Static Pressure: 0 - 3"

#### Direct Drive (FCE-D)

- Wheel Sizes: 12 - 18"
- Capacity: 350 - 3,400 CFM

#### Belt Drive (FCE-B)

- Wheel Sizes: 12 - 40"
- Capacity: 150 - 21,000 CFM



#### FCRU (Upblast)

Static Pressure: 0 - 6"

#### Direct Drive (FCRU-D)

- Wheel Sizes: 12 - 18"
- Capacity: 350 - 3,600 CFM

#### Belt Drive (FCRU-B)

- Wheel Sizes: 12 - 40"
- Capacity: 150 - 22,000 CFM

## Lo-Pro Catalog

### Low Profile



#### LP

#### Direct Drive (LPD)

- Wheel Sizes: 10 - 16.5"
- Capacity: 200 - 2,800 CFM
- Static Pressure: 0 - 1"

#### Belt Drive (LPB)

- Wheel Sizes: 10 - 54"
- Capacity: 315 - 53,000 CFM
- Static Pressure: 0 - 2.5"

## LC Catalog

### Low Contour Hooded or Tiered



#### HLC (Hooded)

#### Direct Drive (HLC-D)

- Wheel Sizes: 7 - 18"
- Capacity: 30 - 3,800 CFM
- Static Pressure: 0 - 1.5"

#### Belt Drive (HLC-B)

- Wheel Sizes: 10 - 54"
- Capacity: 230 - 42,000 CFM
- Static Pressure: 0 - 2"



#### TLC (Tiered)

#### Direct Drive (TLC-D)

- Wheel Sizes: 7 - 18"
- Capacity: 40 - 3,600 CFM
- Static Pressure: 0 - 1.25"

#### Belt Drive (TLC-B)

- Wheel Sizes: 10 - 54"
- Capacity: 280 - 43,000 CFM
- Static Pressure: 0 - 2"



#### TLCH (Hurricane Resistant Tiered)

#### Direct Drive (TLCH-D)

- Wheel Sizes: 7 - 18"
- Capacity: 40 - 3,600 CFM
- Static Pressure: 0 - 1.25"

#### Belt Drive (TLCH-B)

- Wheel Sizes: 10 - 36.5"
- Capacity: 280 - 22,000 CFM
- Static Pressure: 0 - 2"

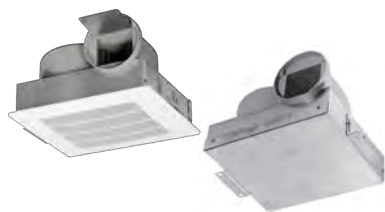




# COOK Ceiling, Wall & Duct Transfer Fans

Gemini Catalog

## "Gemini" Room Exhausts



### GC & GN Size: 126 - 188

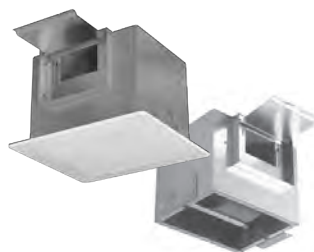
Static Pressure: 0 - 1"

#### Ceiling (GC)

- Capacity: 30 - 260 CFM

#### Inline (GN)

- Capacity: 40 - 260 CFM



### GC & GN Size: 222 - 740

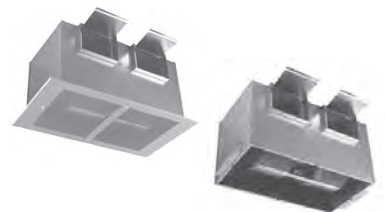
Static Pressure: 0 - 1"

#### Ceiling or Wall (GC)

- Capacity: 80 - 830 CFM

#### Inline (GN)

- Capacity: 80 - 870 CFM



### GC & GN Size: 822 - 960

Static Pressure: 0 - 1"

#### Ceiling or Wall (GC)

- Capacity: 640 - 1,800 CFM

#### Inline (GN)

- Capacity: 760 - 1,800 CFM



### GC & GN Size: 1000 - 2000

#### Ceiling or Wall (GC)

#### Inline (GN)

- Static Pressure: 0.1 - 1"

- Capacity: 1,100 - 3,400 CFM

DB Catalog

## Duct Blowers



### DB & DBX

#### Belt Drive (DB)

#### External Belt Drive (DBX)

- Wheel Sizes: 8 - 18"
- Capacity: 300 - 9,400 CFM
- Static Pressure: 0.125 - 2"



### TDB (Double Wide)

Wheel Sizes: 8 - 18"

Capacity: 800 - 15,500 CFM

Static Pressure: 0.125 - 2"



### SDB

Wheel Sizes: 10 - 24.5"

Capacity: 300 - 14,400 CFM

Static Pressure: 0.250 - 3"

### Special features for products on this page

All GC, GN, DB & DBX sizes are available on Express, Cook's 24-hour shipping program.

EnergyStar: GC 126 - 242

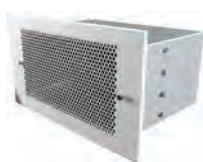
CBF Catalog

## Cinder Block Sized Fan

### CBF

Capacity: 70 - 530 CFM

Static Pressure: 0 - 0.4"



Air Curtain Catalog

## Air Curtain

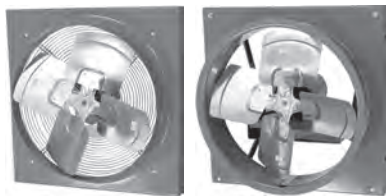


### Air Curtain

Max. Capacity: 3,200 CFM

## Propeller Wall Catalog

### X Series Aluminum Prop



#### XWD

Direct Drive

##### Standard (XWD)

- Prop Sizes: 8 - 24"
- Capacity: 80 - 6,600 CFM
- Static Pressure: 0 - 0.5"

##### Heavy Duty (XWHD)

- Prop Sizes: 12 - 24"
- Capacity: 290 - 8,000 CFM
- Static Pressure: 0 - 0.75"

#### XPD (Direct Drive)

Direct Drive

##### Standard (XPD)

- Prop Sizes: 8 - 24"
- Capacity: 80 - 6,600 CFM
- Static Pressure: 0 - 0.5"

##### Heavy Duty (XPHD)

- Prop Sizes: 12 - 24"
- Capacity: 290 - 8,000 CFM
- Static Pressure: 0 - 0.75"

### X.Stream Steel Prop



#### XLW & XMW (Standard Duty)

Belt Drive

Prop Sizes: 20 - 60"

##### Low Pressure Prop (XLW)

- Capacity: 1,100 - 33,000 CFM
- Static Pressure: 0 - 0.5"

##### Medium Pressure Prop (XMW)

- Capacity: 1,400 - 33,000 CFM
- Static Pressure: 0 - 1"



#### XLWH & XMWH (Heavy Duty)

Belt Drive

Prop Sizes: 20 - 60"

Static Pressure: 0 - 1"

##### Low Pressure Prop (XLWH)

- Capacity: 1,400 - 59,000 CFM

##### Medium Pressure Prop (XMWH)

- Capacity: 1,800 - 57,000 CFM

Packaged fans



Packaged fans include a standard wall fan in a galvanized steel enclosure, integral mounting flange & weather-resistant shutter.

#### XLPH & XMP (Standard Duty)

Belt Drive

Prop Sizes: 20 - 60"

##### Low Pressure Prop (XLPH)

- Capacity: 1,100 - 28,000 CFM
- Static Pressure: 0 - 0.5"

##### Medium Pressure Prop (XMP)

- Capacity: 1,400 - 27,000 CFM
- Static Pressure: 0 - 1"

#### XLPH & XMPH (Heavy Duty)

Belt Drive

Prop Sizes: 20 - 60"

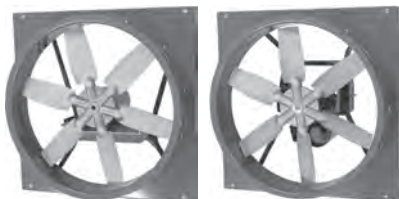
##### Low Pressure Prop (XLPH)

- Capacity: 2,100 - 49,000 CFM
- Static Pressure: 0 - 0.75"

##### Medium Pressure Prop (XMPH)

- Capacity: 3,500 - 46,000 CFM
- Static Pressure: 0 - 1"

### A Series Cast Aluminum Prop



#### AWD & AWB

##### Direct Drive (AWD)

- Prop Sizes: 12 - 48"
- Capacity: 360 - 33,000 CFM
- Static Pressure: 0 - 0.75"

##### Belt Drive (AWB)

- Prop Sizes: 24 - 48"
- Capacity: 2,100 - 42,000 CFM
- Static Pressure: 0 - 0.5"

#### APD & APB

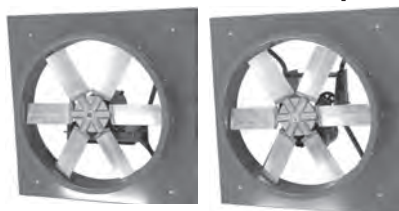
##### Direct Drive (APD)

- Prop Sizes: 16 - 36"
- Capacity: 850 - 12,000 CFM
- Static Pressure: 0 - 0.375"

##### Belt Drive (APB)

- Prop Sizes: 24 - 48"
- Capacity: 1,400 - 20,000 CFM
- Static Pressure: 0 - 0.375"

### E Series Extruded Aluminum Prop



#### EWD & EWB

##### Direct Drive (EWD)

- Prop Sizes: 20 - 54"
- Capacity: 680 - 59,000 CFM
- Static Pressure: 0 - 1"

##### Belt Drive (EWB)

- Prop Sizes: 24 - 72"
- Capacity: 1,200 - 95,000 CFM
- Static Pressure: 0 - 1.5"

#### EPD & EPB

##### Direct Drive (EPD)

- Prop Sizes: 20 - 54"
- Capacity: 1,500 - 50,000 CFM
- Static Pressure: 0 - 1"

##### Belt Drive (EPB)

- Prop Sizes: 24 - 72"
- Capacity: 480 - 80,000 CFM
- Static Pressure: 0 - 0.75"

### Special features for products on this page

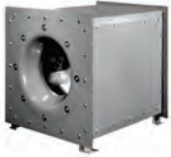
All X.Stream Series sizes are available on Express, Cook's 24-hour shipping program.

Propeller Wall fans are available in exhaust (standard) and supply. Be advised: propeller wall fans may bring rain into the building when used for supply. See ASP Series, KSP Series, CFS Series, HMD, QMXS, CVR-S, SEP, ETS, REBS, HES-D, HES, HXS or Economizer for other supply options.



## SQI Catalog

### Square Centrifugal



#### SQI-D (Direct Drive)

##### Standard Wheel

- Wheel Sizes: 7 - 16.5"
- Capacity: 50 - 4,900 CFM
- Static Pressure: 0 - 2"



#### SQI-B (Belt Drive)

##### Standard Wheel (SQI-B)

- Wheel Sizes: 9 - 40.2"
- Capacity: 400 - 33,000 CFM
- Static Pressure: 0.125 - 3"

##### High Pressure Wheel (SQI-HP)

- Wheel Sizes: 13.5 - 36.5"
- Capacity: 220 - 31,000 CFM
- Static Pressure: 0.25 - 5"

## SQN Catalog

### Multi-Directional Square Centrifugal



#### SQN-D (Direct Drive)

##### Standard Wheel (SQN-D)

- Wheel Sizes: 7 - 16.5"
- Capacity: 30 - 4,300 CFM
- Static Pressure: 0 - 2"

##### Standard Wheel with EC motor (SQND-EC)

- Wheel Sizes: 7 - 15"
- Capacity: 70 - 2,500 CFM
- Static Pressure: 0 - 1.25"



#### SQN-B (Belt Drive)

##### Standard Wheel (SQN-B)

- Wheel Sizes: 10 - 40.2"
- Capacity: 35 - 26,000 CFM
- Static Pressure: 0.125 - 3"

##### High Pressure Wheel (SQN-HP)

- Wheel Sizes: 13.5 - 40.2"
- Capacity: 1,000 - 22,000 CFM
- Static Pressure: 0.25 - 5"

## TCN Catalog

### Tubular Centrifugal Inline



#### TCN-D (Direct Drive)

Wheel Sizes: 6 - 16.5"  
Static Pressure: 0 - 3"

##### Standard Wheel (TCN-D)

- Capacity: 90 - 5,000 CFM

##### High Pressure Wheel (TCNH-D)

- Capacity: 90 - 4,500 CFM



#### TCN-B (Belt Drive)

Wheel Sizes: 6 - 49"

##### Standard Wheel (TCN-B)

- Capacity: 50 - 41,000 CFM
- Static Pressure: 0 - 2.5"

##### High Pressure Wheel (TCNH-B)

- Capacity: 30 - 46,000 CFM
- Static Pressure: 1 - 4"

## CV Catalog

### Centri-Vane Inline



#### CVD (Direct Drive)

##### Direct Drive

- Wheel Sizes: 8 - 20"
- Capacity: 80 - 5,600 CFM
- Static Pressure: 0.125 - 0.875"



#### CVB & CV-S (Belt Drive)

Wheel Sizes: 12 - 36"

##### Belt Drive (CVB)

- Capacity: 600 - 23,000 CFM
- Static Pressure: 0.250 - 4"

##### Belt Drive Stretched Unit with Straightening Vanes (CV-S)

- Capacity: 600 - 31,200 CFM
- Static Pressure: 0.500 - 6"

## CIC Catalog

### Centrifugal Inline



#### CIC (Belt Drive)

- Wheel Sizes: 12 - 73"
- Capacity: 900 - 192,000 CFM
- Static Pressure: 1 - 12"

#### Special features for products on this page

All SQN, SQI sizes are available on Express, Cook's 24-hour shipping program (CV up to size 300). SQND-EC is not available on Express.

Seismic (OSHPD) Tested

Products	Sizes
SQN-D series	60 - 402

UL 762 Grease Laden Air

Restaurant Exhaust \*

CIC

\* See page 17 for details

QMX Catalog  
**Mixed-Flow  
 Inline**



**QMXD (Direct Drive)**

**Standard Wheel (QMXD)**

- Wheel Sizes: 15 - 60"
- Capacity: 1,500 - 119,000 CFM
- Static Pressure: 0.25 - 5"

**High Pressure Wheel (QMXD-HP)**

- Wheel Sizes: 15 - 60"
- Capacity: 1,500 - 81,000 CFM
- Static Pressure: 1 - 8"

**Extended Pressure Wheel (QMXD-XP)**

- Wheel Sizes: 15 - 60"
- Capacity: 2,400 - 129,000 CFM
- Static Pressure: 3 - 15"



**QMX (Belt Drive)**

**Standard Wheel (QMX)**

- Wheel Sizes: 9 - 60"
- Capacity: 500 - 119,000 CFM
- Static Pressure: 0.25 - 5"

**High Pressure Wheel (QMX-HP)**

- Wheel Sizes: 9 - 60"
- Capacity: 500 - 81,000 CFM
- Static Pressure: 1 - 8"

**Extended Pressure Wheel (QMX-XP)**

- Wheel Sizes: 15 - 60"
- Capacity: 2,400 - 129,000 CFM
- Static Pressure: 3 - 15"



**Special features for products on this page**

**Seismic (OSHPD) Tested**

Products	Sizes
QMX series	90 - 600

**UL 762**

**Grease Laden Air Restaurant Exhaust \***  
 QMX & QMX-HP

**UL Power Ventilator for Smoke Control Systems \***

QMX & QMX-HP  
 QMXD & QMXHPD  
 QMXD & QMXHPD bifurcated

\* See page 17 for details



## QMX Catalog

### Mixed-Flow Roof Mounted



#### QMXU (Upblast)

Belt Drive

##### Standard Wheel (QMXU)

- Wheel Sizes: 9 - 60"
- Capacity: 920 - 119,000 CFM
- Static Pressure: 0.25 - 5"

##### High Pressure Wheel (QMXU-HP)

- Wheel Sizes: 9 - 60"
- Capacity: 920 - 81,000 CFM
- Static Pressure: 1 - 8"

##### Extended Pressure Wheel QMXU-XP

- Wheel Sizes: 15 - 60"
- Capacity: 2,600 - 129,000 CFM
- Static Pressure: 3 - 15"



#### QMXE (Exhaust) & QMXS (Supply)

Belt Drive

##### Standard Wheel (QMXE & QMXS)

- Wheel Sizes: 9 - 30"
- Capacity: 500 - 29,000 CFM
- Static Pressure: 0.25 - 5"

##### High Pressure Wheel (QMXE-HP & QMXS-HP)

- Wheel Sizes: 9 - 30"
- Capacity: 500 - 20,000 CFM
- Static Pressure: 1 - 8"

##### Extended Pressure Wheel (QMXS-XP & QMXS-XP)

- Wheel Sizes: 15 - 30"
- Capacity: 2,600 - 34,000 CFM
- Static Pressure: 3 - 15"

## CV Catalog

### Centri-Vane Roof Mounted



#### UCV (Upblast)

Belt Drive

Wheel Sizes: 12 - 36"

Capacity: 770 - 24,000 CFM

Static Pressure: 0 - 4"



#### CVR (Exhaust) & CVR-S (Supply)

Belt Drive

Wheel Sizes: 12 - 36"

Capacity: 620 - 24,000 CFM

Static Pressure: 0 - 4"

## CIC Catalog

### Centrifugal Roof Mounted



#### UCIC (Upblast)

Belt Drive

Wheel Sizes: 12 - 60"

Capacity: 2,400 - 104,000 CFM

Static Pressure: 1 - 8"

### Special features for products on this page

UL 762 Grease Laden Air  
Restaurant Exhaust \*

QMXU & QMXU-HP

UL Power Ventilator for Smoke  
Control Systems \*

QMXU series

QMXDU / QMXDU Bifurcated series

\* See page 17 for details

## Propeller Upblast Catalog

### X.Stream Series **LXUL, LXUM (Low Silhouette)**

#### Steel Prop



Belt Drive  
Prop Sizes: 20 - 60"  
Static Pressure: 0 - 0.625"

#### Low Pressure Prop (LXUL)

- Capacity: 3,400 - 58,000 CFM

#### Medium Pressure Prop (LXUM)

- Capacity: 3,400 - 48,000 CFM



### **LXULMO & LXULMO (Belt Drive Motor Outside) LXULSC & LXUMSC (Belt Drive Smoke Control)**

Belt Drive  
Prop Sizes: 20 - 60"

#### Low Pressure Prop (LXULMO & LXULMO)

- Capacity: 3,800 - 55,000 CFM
- Static Pressure: 0 - 0.875"

#### Medium Pressure Prop (LXUMMO & LXUMSC)

- Capacity: 3,400 - 50,000 CFM
- Static Pressure: 0 - 0.625"

### Triton® Series

#### Steel Prop



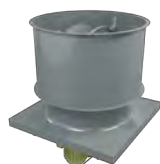
### **TUD, TUDSC, TUB & TUBSC**

#### Direct Drive (TUD & TUDSC)

- Prop Sizes: 20 - 60"
- Capacity: 3,400 - 60,000 CFM
- Static Pressure: 0 - 1.125"

#### Belt Drive (TUB & TUBSC)

- Prop Sizes: 20 - 72"
- Capacity: 3,600 - 92,000 CFM
- Static Pressure: 0 - 1.250"



### **LTU (Low Silhouette Belt Drive)**

- Prop Sizes: 20 - 60"
- Capacity: 3,300 - 73,000 CFM
- Static Pressure: 0 - 1.125"



### **LTUMO (Belt Drive Motor Outside) LTUSC (Belt Drive Smoke Control)**

Prop Sizes: 20 - 60"  
Capacity: 3,300 - 69,000 CFM  
Static Pressure: 0 - 1.125"

### E Series

#### Extruded Aluminum Prop



### **EUD & EUB**

Static Pressure: 0 - 1.25"

#### Direct Drive (EUD)

- Prop Sizes: 24 - 48"
- Capacity: 3,900 - 50,000 CFM

#### Belt Drive (EUB)

- Prop Sizes: 24 - 72"
- Capacity: 4,300 - 94,000 CFM



### **LEU (Low Silhouette)**

#### Belt Drive (LEU)

- Prop Sizes: 20 - 60"
- Capacity: 3,300 - 59,000 CFM
- Static Pressure: 0 - 1"



### **LEUMO (Belt Drive Motor Outside)**

#### Belt Drive (LEUMO)

- Prop Sizes: 20 - 60"
- Capacity: 3,300 - 56,000 CFM
- Static Pressure: 0 - 1.125"

### A Series

#### Cast Aluminum Prop



### **AUD & AUB**

Prop Sizes: 24 - 48"  
Static Pressure: 0 - 0.25"

#### Direct Drive (AUD)

- Capacity: 4,000 - 35,000 CFM

#### Belt Drive (AUB)

- Capacity: 4,000 - 35,000 CFM

### Special features for products on this page

All X.Stream Series & RCG sizes are available on Express, Cook's 24-hour shipping program.

UL Power Ventilator for Smoke Control Systems

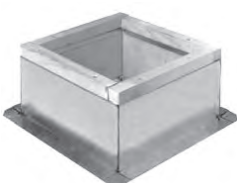
TUBSC

TUDSC \*

LXULSC, LXUMSC & LTUSC

\* See page 17 for details

### Curbs



### **Standard (RCG & RCA)**

9.5" or 13.5" Standard Height

#### Galvanized (RCG)

- One Piece Construction
- 18 Ga. Galvanized Steel

#### Aluminum (RCA)

- .080 Aluminum



### **Attenuating (RCG-AT & RCA-AT)**

16" or 24" Standard Height

#### Galvanized (RCG-AT)

- One Piece Construction
- 18 Ga. Galvanized Steel

#### Aluminum (RCA-AT)

- .080 Aluminum

The lab exhaust curb is on page 14

## Propeller Inline Catalog

### Tube Axial Triton® Series Steel Prop



#### TID & TIB

##### Direct Drive (TID)

- Prop Sizes: 20 - 60"
- Capacity: 1,700 - 64,000 CFM
- Static Pressure: 0 - 1"

##### Belt Drive (TIB)

- Prop Sizes: 20 - 72"
- Capacity: 2,300 - 98,000 CFM
- Static Pressure: 0 - 1.25"

### Tube Axial A Series Cast Aluminum Prop



#### ADD & ADB

Static Pressure: 0 - 0.5"

##### Direct Drive (ADD)

- Prop Sizes: 12 - 24"
- Capacity: 300 - 8,100 CFM

##### Belt Drive (ADB)

- Prop Sizes: 16 - 48"
- Capacity: 970 - 37,000 CFM

### Tube Axial E Series Extruded Aluminum Prop



#### EDD & EDB

Extruded Aluminum Propeller

Static Pressure: 0 - 1"

##### Direct Drive (EDD)

- Prop Sizes: 24 - 48"
- Capacity: 1,600 - 47,000 CFM

##### Belt Drive (EDB)

- Prop Sizes: 24 - 60"
- Capacity: 3,400 - 71,000 CFM

## VA Catalog

### Fixed Pitch Vane Axial Cast Aluminum Airfoil Prop



#### VAD & VAB

##### Direct Drive (VAD)

- Prop Sizes: 18 - 60"
- Capacity: 2,100 - 118,500 CFM
- Static Pressure: 0 - 6"

##### Belt Drive (VAB & VAHB)

- Prop Sizes: 12 - 60"
- Capacity:
- Regular Duty: 680 - 99,000 CFM
- Heavy Duty: 670 - 115,000 CFM
- Static Pressure: 1 - 6.5"

## AVA Catalog

### Adjustable Vane Axial Cast Aluminum Airfoil Prop



#### AVAD & AVAB

Prop Sizes: 35 - 79"

##### Direct Drive (AVAD)

- Capacity: 310 - 206,000 CFM
- Static Pressure: 0 - 13"

##### Belt Drive (AVAB)

- Capacity: 410 - 287,000 CFM
- Static Pressure: 1 - 8"

## AF Catalog

### Fixed Tube Axial

#### AF

##### Direct Drive

##### With Cast Aluminum Airfoil Prop:



Prop Sizes: 12 - 60"  
Static Pressure: 0 - 5.0"

##### Air Distribution (AFD-C)

- Capacity: 250 - 68,000 CFM

##### Outlet Vane Section Air Distribution (AFDV-C)

- Capacity: 380 , 68,000 CFM

##### Belt Drive

##### With Cast Aluminum Airfoil Prop:



##### Air Distribution (AFB-C)

##### Outlet Vane Section Air Distribution (AFBV-C)

- Prop Sizes: 12 - 60"
- Capacity: 10 - 99,000 CFM
- Static Pressure: 0 - 6.0"

##### Belt Drive

##### With Stainless Steel Prop:

##### Standard

##### Air Distribution (AFB-S)

##### Outlet Vane Section Air Distribution (AFBV-S)

##### High Temperature

##### Air Distribution (AFB-H)

##### Outlet Vane Section Air Distribution (AFBV-H)

- Prop Sizes: 12 - 36"
- Capacity: 40 - 24,000 CFM
- Static Pressure: 0 - 4.5"

### Special features for products on this page

UL Listing Power Ventilator for Smoke Control Systems \*  
AFB-H, AFBV-H, TID & TIB

\* See page 17 for details.

## Propeller Roof Catalog

### A Series

#### Cast Aluminum Prop



#### AQ (Exhaust)

##### Direct Drive (AQD)

- Prop Sizes: 12 - 48"
- Capacity: 150 - 19,000 CFM
- Static Pressure: 0 - 0.75"

##### Belt Drive (AQB)

- Prop Sizes: 24 - 48"
- Capacity: 1,100 - 17,000 CFM
- Static Pressure: 0 - 0.50"

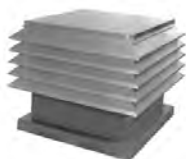
#### SEP (Reversible)

##### Belt Drive

- Prop Sizes: 24 - 48"
- Capacity: 1,000 - 21,000 CFM
- Static Pressure: 0 - 0.50"

### E Series

#### Extruded Aluminum Prop



#### ETE & ETS

##### Tiered Fan

##### Belt Drive

- Prop Sizes: 24 - 60"
- Static Pressure: 0 - 0.5"

##### Exhaust (ETE)

- Capacity: 1,100 - 72,000 CFM

##### Supply, Filtered Supply (ETS)

- Capacity: 930 - 65,000 CFM

## REBEL Catalog

### "REBEL"

#### Stamped Aluminum Prop



#### REB

##### Reversible

##### Direct Drive

- Prop Sizes: 12 - 24"

##### Exhaust (REBE)

- Capacity: 80 - 5,800 CFM
- Static Pressure: 0 - 1"

##### Supply, Filtered Supply (REBS)

- Capacity: 160 - 5,600 CFM
- Static Pressure: 0 - 0.625"

## Economizer Catalog

### Hooded "Economizer"



#### MRS

##### E Series Extruded Aluminum Prop

##### Direct Drive

- Prop Sizes: 24 - 54"
- Static Pressure: 0 - 0.5"

##### Mix, Recirculate, Supply (MRS-D)

- Capacity: 2,200 - 43,000 CFM

##### Mix, Recirculate, Supply, Exhaust (MRSE-D)

- Capacity: 1,700 - 39,000 CFM

##### Mix, Recirculate, Supply-Filtered (MRSF-D)

- Capacity: 2,200 - 38,000 CFM

## H Series Direct Drive Catalog

### Hooded "H Series" Direct Drive



#### E Series Extruded Aluminum Prop

- Prop Sizes: 20 - 54"
- Static Pressure: 0 - 1"

##### Exhaust (HEE-D)

- Capacity: 1,200 - 47,000 CFM

##### Supply (HES-D)

- Capacity: 890 - 48,000 CFM

##### Filtered (HEF-D)

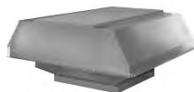
- Capacity: 1,000 - 49,000 CFM

##### Reversible (HER-D)

- Capacity: 680 - 47,000 CFM

## H Series Belt Drive Catalog

### Hooded "H Series" Belt Drive



#### HE

#### E Series Extruded Aluminum Prop

- Prop Sizes: 24 - 60"
- Static Pressure: 0 - 1"

##### Exhaust (HEE)

- Capacity: 1,500 - 54,000 CFM

##### Supply (HES)

- Capacity: 1,100 - 58,000 CFM

##### Filtered (HEF)

- Capacity: 1,600 - 53,000 CFM

##### Reversible (HER)

- Capacity: 2,100 - 50,000 CFM

#### HX

##### X.Stream Steel Prop

- Prop Sizes: 20 - 60"
- Static Pressure: 0 - 0.75"

##### Exhaust (HXE)

- Capacity: 1,000 - 49,000 CFM

##### Supply (HXS)

- Capacity: 1,100 - 54,000 CFM

##### Filtered (HXF)

- Capacity: 980 - 53,000 CFM

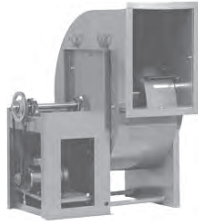


**CP model names:**

Models with a "S" have a welded, Lorenized™, steel wheel with backward inclined flat blades.  
 Models with a "A" have a welded aluminum wheel with backward inclined flat blades.  
 Models with a "V" have an aluminum wheel with backward inclined flat blades.  
 Models with a "F" have a steel wheel with forward curved blades.  
 Models ending with a "-A" have a backward inclined airfoil wheel.

Learn about props  
and wheels. Read  
the *Engineering  
Cookbook*, free from  
LorenCook.com

## CP Catalog

**Utility Vent Set**

**CP Belt Drive:**
**CPS, CPA & CPV**

Wheel Sizes: 10 - 49"

**Steel Wheel & Scroll (CPS)**
**Aluminum Wheel & Scroll (CPA)**

- Capacity: 70 - 49,000 CFM
- Static Pressure: 1 - 8"
- Class I or Class II (size 120 - 365)

**Aluminum Wheel & Steel Scroll (CPV)**

- Capacity: 50 - 43,000 CFM
- Static Pressure: 0.25 - 2.5"


**CP Direct Drive:**
**CPFD**
**Aluminum Wheel & Steel Scroll**

- Wheel Sizes: 6 - 12"
- Capacity: 200 - 2,600 CFM
- Static Pressure: 0.125 - 2"

**CPS-A & CPA-A**

Wheel Sizes: 12 - 49"

Static Pressure: 1 - 8"

Class I or Class II (size 120 - 365)

**Steel Wheel & Scroll (CPS-A)**

- Capacity: 660 - 78,000 CFM

**Aluminum Wheel & Scroll (CPA-A)**

- Capacity: 700 - 53,000 CFM

**CPFB**
**Steel Wheel & Scroll**

- Wheel Sizes: 10 - 30"
- Capacity: 500 - 25,000 CFM
- Static Pressure: 0.125 - 2"

## Fiberglass Catalog

**Fiberglass**
**Utility Vent Set**

**FCP**

Wheel Sizes: 12 - 36"

Capacity: 800 - 32,000 CFM

Static Pressure: 1 - 10"

Arrangement 10, Class II Construction

**Special features for products on this page**
**All CPS & CPV up to size 300 are available on Express.**
**High Wind (Miami-Dade) Tested \***

Products	Sizes
CPS	60-245
CPS-A	
CPV	

**Spark Resistant Type A  
construction CPA, CPA-A**
**Seismic (OSHPD) Tested \***

Products	Sizes
CPV	60-490
CPA	
CPA-A	
CPS	
CPS-A	

**UL 762 Grease Laden Air  
Restaurant Exhaust \***

 CPV  
 CPA  
 CPS  
 CPA-A  
 CPS-A

**UL Power Ventilator for Smoke  
Control Systems \***

 CPS  
 CPS-A

\* See page 17 for details.



**CF** blowers have a steel, centrifugal, backward inclined, flat blade wheel. They are available in single wide configurations.  
**CA** blowers have a steel, centrifugal, backward inclined, airfoil wheel. They are available in single and double wide configurations.  
**CAF-DW** blowers have a steel, centrifugal, backward inclined, airfoil wheel. They are available in double wide configurations.

## CA / CF Catalog

### Single Width Single Inlet



#### With 7 Discharge Positions CA SWSI & CF SWSI

Belt Drive  
 Wheel Sizes: 12 - 73"  
 Static Pressure: 1 - 12"  
 Arrangements: 1, 3, 7, 8, 9 & 10  
 Class I, Class II or Class III

#### Airfoil Wheel (CA SWSI)

- Capacity: 700 - 209,000 CFM

#### Flat Blade Wheel (CF SWSI)

- Capacity: 950 - 198,000 CFM



#### With 4 Discharge Positions CA-4 SWSI & CF-4 SWSI

Belt Drive  
 Wheel Sizes: 12 - 60"  
 Static Pressure: 1 - 12"  
 Arrangements: 1, 2, 3, 4 & 7  
 Class I, Class II or Class III

#### Airfoil Wheel (CA-4 SWSI)

- Capacity: 490 - 141,000 CFM

#### Flat Blade Wheel (CF-4 SWSI)

- Capacity: 510 - 127,000 CFM

### Double Width Double Inlet



#### With 7 Discharge Positions CA DWDI & CAF-DW

Belt Drive  
 Wheel Sizes: 12 - 73"  
 Static Pressure: 1 - 12"  
 Arrangement 3 & 7  
 Class I, Class II or Class III

#### Industrial (CA DWDI)

- Capacity: 900 - 375,000 CFM

#### Commercial (CAF-DW)

- Capacity: 900 - 375,000 CFM

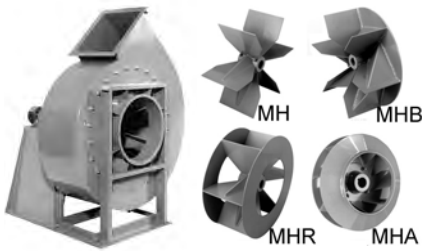


#### With 4 Discharge Positions CA-4 DWDI

Belt Drive  
 Wheel Sizes: 12 - 73"  
 Static Pressure: 1 - 12"  
 Capacity: 900 - 261,000 CFM  
 Arrangement 3 & 7  
 Class I, Class II or Class III

## IMH Catalog

### Material-Laden Air Handlers



#### MH

Wheel Sizes: 7 - 29"  
 Static Pressure: 1 - 27"  
 Arrangements: 1, 4, 8, 9 & 10

#### Open Type Impeller (MH)

- Belt Drive Capacity: 300 - 60,000 CFM

#### Backplated Type Impeller (MHB)

- Belt Drive Capacity: 250 - 65,000 CFM

#### Backward Inclined, Flatblade Impeller (MHA)

- Belt Drive Capacity: 250 - 56,000 CFM
- Direct Drive Capacity: 350 - 145,000 CFM

#### Reinforced Open Type Impeller (MHR)

- Belt Drive Capacity: 300 - 60,000 CFM

## CCP Catalog

### Plug Fans



#### CCP

Wheel Sizes: 12 - 44.5"  
 Static Pressure: 1 - 6"  
 Class I & II

#### True Airfoil Wheel (CCP-A)

- Capacity: 800 - 59,000 CFM

#### Backward Inclined Wheel (CCP-F)

- Capacity: 1,000 - 59,000 CFM

## PLC Catalog

### Plenum Fans



#### PLC

Capacity: 900 - 192,000 CFM  
 Wheel Sizes: 12 - 73"  
 Static Pressure: 1 - 12"  
 Aluminum & Steel Construction  
 Arrangements: 1, 3, & 4  
 Class I, II, & III

#### Belt Drive (PLC)

#### Direct Drive (PLC-D)

### Special features for products on this page

#### Seismic (OSHDP) Tested

Products	Sizes
CA - Arr. 9 and 10	thru size 540
CF - Arr. 9 and 10	thru size 540

## Lab Exhaust Catalog



### LE Series

#### TCHNB-LE

Belt Drive  
Wheel Sizes: 10 - 49"  
Capacity: 350 - 49,000 CFM  
Static Pressure: 0.5 - 4"



#### CPS-LE

Belt Drive  
Wheel Sizes: 6 - 24.5"  
Capacity: 70 - 12,000 CFM  
Static Pressure: 1 - 5"



#### QMXD-LE

##### Direct Drive

##### Regular (QMXLE)

- Wheel Sizes: 15 - 49"
- Capacity: 1,500 - 79,000 CFM
- Static Pressure: 0.25 - 5"

##### High Pressure Wheel (QMXLE-HP)

- Wheel Sizes: 15 - 49"
- Capacity: 1,500 - 54,000 CFM
- Static Pressure: 1 - 8"

##### Belt Drive

##### Regular (QMXLE)

- Wheel Sizes: 9 - 49"
- Capacity: 500 - 79,000 CFM
- Static Pressure: 0.25 - 5"

##### High Pressure (QMXLE-HP)

- Wheel Sizes: 9 - 49"
- Capacity: 500 - 54,000 CFM
- Static Pressure: 1 - 8"



### Vari-Plume®

Patent #7,484,929

#### CA-VP

Belt Drive  
Wheel Sizes: 12 - 73"  
Capacity: 1,500 - 147,000 CFM  
Static Pressure: 1 - 12"



#### QMX-VP

##### Direct Drive

##### Regular (QMXDVP)

- Wheel Sizes: 15 - 60"
- Capacity: 2,500 - 120,000 CFM
- Static Pressure: 1 - 4"

##### High Pressure (QMXHPDVP)

- Wheel Sizes: 16.5 - 60"
- Capacity: 2,500 - 110,000 CFM
- Static Pressure: 1 - 4"

##### Belt Drive

##### Regular (QMXVP)

- Wheel Sizes: 9 - 60"
- Capacity: 2,500 - 120,000 CFM
- Static Pressure: 1 - 6"

##### High Pressure (QMXVP)

- Wheel Sizes: 9 - 60"
- Capacity: 2,500 - 108,000 CFM
- Static Pressure: 1 - 6"

## Power Plume Catalog

### Power-Plume®

#### PP

Patent Pending  
Powered Induction Device Lab Exhaust System  
Fan Mounted, Stack Mounted or Curb Mounted



### Lab Exhaust Curb

#### LEC

Minimum 12 Ga. Phenolic Epoxy  
Powder Coated Steel  
Continuously Welded Corner  
12" or 18" Standard Height





## ASP Catalog

### Forward Curved Supply



#### ASP

Belt Drive  
Wheel Sizes: 9 - 20"  
Capacity: 280 - 16,000 CFM  
Static Pressure: 0 - 2"

#### Regular (ASP)

#### Tiered (ASP-T)

• Bottom or Side Discharge  
**High Wind Rated (ASPTH)**  
• Bottom Discharge

## KSP Catalog

### Forward Curved Filtered Kitchen Supply



#### KSP

#### Direct Drive (KSPD)

• Wheel Sizes: 4.75 - 8.5"  
• Capacity: 80 - 1,800 CFM  
• Static Pressure: 0 - 0.75"

#### Belt Drive (KSPB)

• Wheel Sizes: 9 - 20"  
• Capacity: 200 - 12,000 CFM  
• Static Pressure: 0 - 1.75"

## CFS Catalog

### Backward Inclined Filtered Supply



#### CFS

Wheel Sizes: 12 - 36.5"  
Capacity: 1,100 - 53,000 CFM  
Static Pressure: 1" - 5"

### Special features for products on this page

All KSP, ASP, PR, TR are available on Express, Cook's 24-hour shipping program.

#### High Wind (Miami-Dade) Tested

Products	Sizes
ASP ASPTH	90-200
TREH	Throat Sizes 24" sq. - 48" sq.

## ERV Catalog

### Energy Recovery



#### ERV

Static Pressure: 0 - 1.5"

#### Direct Drive (ERV-D)

• Energy Recovery Wheel Sizes: 18 - 24"  
• Capacity: 30 - 1,300 CFM

#### Belt Drive (ERV-B)

• Energy Recovery Wheel Sizes: 28 - 72"  
• Capacity: 500 - 10,000 CFM

Available with optional heating & cooling coils.

## HMD Catalog

### Direct Fire Heated Makeup



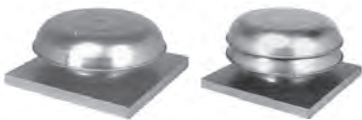
#### HMD

#### Belt Drive (HMD)

• Capacity: 700 - 4,100 CFM  
• Static Pressure: 0 - 3"  
• Max. Temperature Rise: 100°F

## Gravity Ventilation Catalog

### Gravity Ventilation



#### PR & TR (Spun Aluminum)

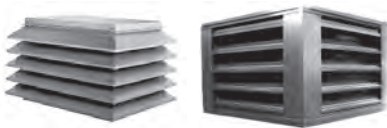
Sizes: 8 - 48"

#### Regular (PR)

• Intake Capacity: 260 - 22,000 CFM  
• Relief Capacity: 220 - 22,000 CFM

#### Tiered (TR)

• Intake Capacity: 260 - 22,000 CFM  
• Relief Capacity: 220 - 22,000 CFM



#### TRE & TREH (Extruded Tiered)

#### Regular (TRE)

#### High Wind Rated (TREH)

• Throat Sizes: 12 x 12 - 60 x 120"  
• Intake Capacity: 330 - 63,000 CFM  
• Relief Capacity: 310 - 56,000 CFM



#### GI & GR

Throat Sizes: 12 x 12 - 72 x 144"

#### Intake (GI)

• Intake Capacity: 600 - 93,000 CFM

#### Relief (GR)

• Relief Capacity: 900 - 86,000 CFM



#### LSUG (Low Silhouette)

Sizes: 24 - 60"





CAC Catalog

## Air Circulator Fan Heads



### CAC-ACH & CAC-ACHO (Oscillating)

- Direct Drive
- Wheel Size: 24 & 30"
- Capacity: 5,000 - 7,900 CFM
- Velocity: 120 - 720 feet per minute, at 40 - 10 feet

### CAC-IHPWD (Wash down)

- Direct Drive
- Wheel Size: 20 - 30"
- Capacity: 7,100 - 9,300 CFM
- Velocity: 420 - 1,700 feet per minute, at 40 - 10 feet

### 2 Mounting Choices:



Pedestal Mount

Wall Mount

## Mountable Mini-Blower Fan Heads



### CAC-MBDY

- Direct Drive
- Wheel Size: 24 & 30"
- Capacity: 5,000 - 7,800 CFM
- Velocity: 120 - 710 feet per minute, at 10 - 40 feet

### 3 Mounting Choices:



Blower Wall Mount

## Mounted Blower Fan Heads



### CAC-UTE

- Direct Drive
- Wheel Size: 18"
- Capacity: 3,200 - 4,600 CFM
- Velocity: 100- 500 feet per minute, at 10 - 40 feet.



I-Beam Mount



Ceiling Mount

## Suspendable Blower

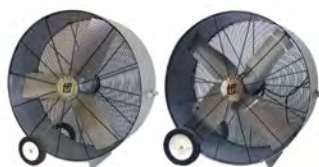


### CAC-SBD

- Direct Drive
- Wheel Size: 36 & 42"
- Capacity: 9,000 - 16,800 CFM
- Velocity: 130 - 820 feet per minute, at 10 - 50 feet

Mounting Accessories Sold Separate

## Portable Blowers



### CAC-PBD (Direct drive, three blade prop)

- Wheel size: 36 & 42"
- Capacity: 9,000 - 15,000 CFM
- Velocity: 130 - 820 feet per minute, at 50 - 10 feet

### CAC-PBB (Belt drive, four blade prop)

- Wheel size: 36 - 48"
- Capacity: 14,000 - 22,000 CFM
- Velocity: 130 - 820 feet per minute, at 70 - 10 feet

## UL 762

COOK products with a UL 762 listing are designed to eject contaminated or grease-laden air. These products are UL listed to operate continuously at elevated temperatures and continue operation during grease flare-up. All of these units are intended for installation in accordance with the National Fire Protection Association (NFPA) Standard 96: Standard for Ventilation Control and Fire Protection of Commercial Cooking Operations.



Grease Terminator 2



Curb mounted trough

### UL Listed to Operate Continuously to 300°F

- VCR / VCR-HP / VCR-XP / VCRD / VCRD-HP / VCRD-XP
- Lo-Pro (requires additional accessories)
- CPV / CPA / CPA-A
- QMX / QMX-HP / QMXU / QMXU-HP / QMXLE / QMXLE-HP
- CIC

### UL Listed to Operate Continuously to 500°F

- CPS / CPS-A
- CA / CA-SWSI Arrangement 1, 9 and 10
- CA-4 / CA-4 SWSI Arrangement 1 and 2
- CF / CF Arrangement 1, 9 and 10
- CF-4 / CF-4 Arrangement 1 and 2
- QMX / QMX-HP Arrangement 9
- CIC

CPV, CPA, CPA-A, QMX, QMX-HP and CIC must be ordered with drain and access door to comply with UL requirements. Weather covers are required for outdoor applications. When airstream temperatures are expected to exceed 180°F, high temperature accessories may be required.

### Two Grease Collection Options

The Grease Terminator 2 is a grease-capture and containment system. It uses the same material that oil companies use to clean catastrophic oil spills on the ocean. It lasts about 30 to 45 days and is then replaced.

The grease trough is constructed of continuously welded 0.064 aluminum and includes a pan, lid and mounting hardware. Both the curb and non-curb mounted versions feature a baffled design for extended capacity. The lid and pan are removable for easy cleaning.



Non-curb mounted hanging trough

## UL listing “Power Ventilator for Smoke Control Systems”

The UL listing “Power Ventilator for Smoke Control Systems” is a test procedure and category which was initiated by Loren Cook Company and developed in a joint effort with UL in 1990. Several different sources were used in the definition of this test procedure. These sources include UL Standards 705, 762, 793, Southern Building Code Congress International (SBCCI) Standard Fire Prevention Code/1988, and Industrial Risk Insurers (IRI) Document E2. The requirements for the UL listing “Power Ventilator for Smoke Control Systems” are summarized as follows.

### Roof Mounted Products

- The unit must withstand a specified elevated airstream temperature for a specified duration.
- The unit must be listed under UL 705.
- Fans with integral butterfly dampers shall meet the following requirements:
  - Fans shall be fitted with spring loaded damper actuator arms which will open the dampers automatically when the airstream temperature reaches 165°F.
- The dampers must activate with or without electrical power connected to the fan.
- The damper actuators must meet the requirements in UL 793 for Snow and Dust Load Testing of Butterfly Dampers (10 pounds per square foot).

### Inline Products

- The unit must withstand a specified elevated airstream temperature for a specified duration.
- The unit must be listed under UL 705.

Model	Sizes	Maximum Pressure	Duration at Specified Airstream Temp.			
			302°F	500°F	572°F	1000°F
ACSC ACSC-HP ACSC-XP	100 thru 490	5.0"		4 HOURS		15 MIN.
TUBSC	20 thru 72	1.0"		4 HOURS		15 MIN.
LXULSC LXUMSC LTUSC	20 thru 60	1.0"		4 HOURS		15 MIN.
TUDSC ++	20 thru 72	1.0"	8 HOURS	5 HOURS	2 HOURS	15 MIN.
CPS * CPS-A *	60 thru 490	5.0"		4 HOURS		2 HOURS
QMXU ** QMXU-HP **	90 thru 600	8.0"		6 HOURS		1 HOUR
QMXDU + QMXHPDU +	150 thru 600	8.0"		6 HOURS	2 HOURS	30 MIN.
QMXDU + QMXHPDU +	150 thru 600 <b>Bifurcated</b>	8.0"			10 HOURS	2 HOURS
CA / CF ***	120 thru 730	12"		4 HOURS		2 HOURS
LPB*	100 thru 490	3.0"		4 HOURS		15 MIN.
QMX ** QMX-HP **	90 thru 600	8.0"		6 HOURS		1 HOUR
QMXD + QMXHPD +	150 thru 600	8.0"		6 HOURS	2 HOURS	30 MIN.
QMXD + QMXHPD +	150 thru 600 <b>Bifurcated</b>	8.0"			10 HOURS	2 HOURS
AFB-H AFBV-H	12 thru 36	4.5" 5.5"		4 HOURS		15 MIN.
TIB *	20 thru 72	1.25"		4 HOURS		15 MIN.
TID ++	20 thru 72	1.0"	8 HOURS	5 HOURS	2 HOURS	15 MIN.

\* Requires additional accessories. Consult factory for details. \*\* Arrangement 9 only. Requires additional accessories. See catalog for details. \*\*\* SWSI Arrangements: 1, 8, 9 & 10 only. Requires additional accessories. See catalog for details. + Requires motor with Class F insulation. ++ Requires TEFC motor with Class F insulation.



## Design

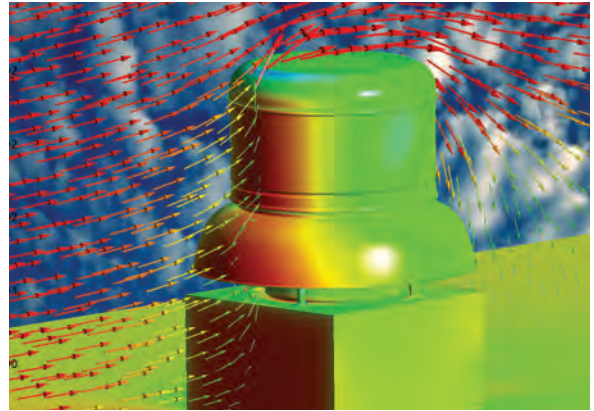
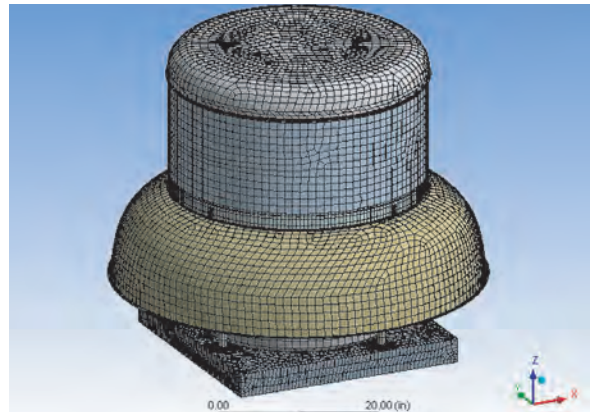
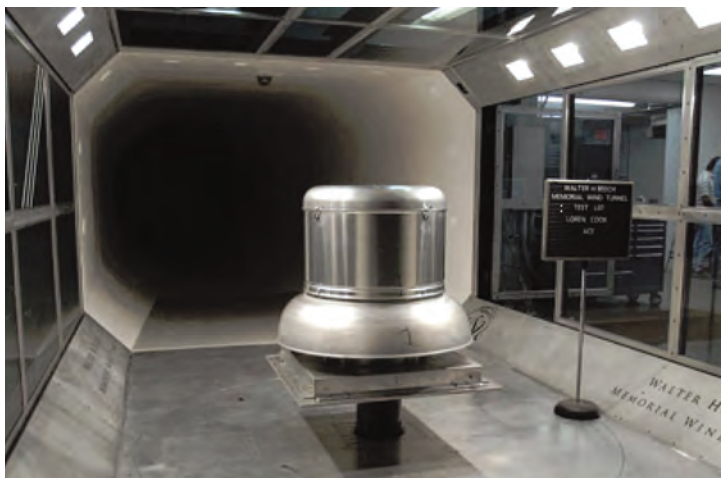
Loren COOK Company's hurricane rated construction option was developed for the demands of high wind and coastal areas. Through rigorous research and testing, this construction option was developed to meet the demands of Miami-Dade County's Testing Application Standards (TAS) 201, 202 and 203. Each of these fans has passed all three of the TAS testing protocols.

In addition, all of these products have received approval from the Florida Building Commission.

The hurricane rated construction option was engineered so that the fans have the same physical size as the standard construction units. In addition, the fan's air and sound performance, as shown in the product catalogs and Compute A Fan® selection software, remains identical to the standard construction products. Approved attachment details are included in the Notice of Acceptance documents on the Miami-Dade County Florida website ([miamidade.gov](http://miamidade.gov)) and the Florida Building Commission website ([floridabuilding.org](http://floridabuilding.org)). These details are also available in Loren COOK Company's Installation, Operation and Maintenance manual "Hurricane Rated Construction" Supplement. The approved attachment details do not require the use of external tie downs to the roof. Installation of the fans to an approved roof curb must be in accordance with these details to meet the Miami-Dade County and Florida Building Commission approvals.

In the early stages of development, products were modeled with Computational Fluid Dynamics (CFD) to determine the stress points as air flowed around the fans at speeds of 150 MPH. Next, Finite Element Analysis (FEA) was utilized to model and evaluate stress plots. Finally, the proper material gauges and hardware were determined so the fans would survive these high wind loads.

In the next step of testing, products were placed in an aerodynamic wind tunnel. They were tested to a 150 MPH sustained wind to determine the product's resistance to wind load. *Continued on next page*

**CFD****FEA****Wind Tunnel****150 MPH Wind**





## Testing

Finally, the fans passed not one, not two, but all three approval tests

**TAS-201: Large Missile Impact Test** - determines sufficient resistance to windborne debris as determined by the Florida Building Code, Section 1626 for maintaining the envelope of the building. Test employs an 8\* foot Southern Pine 2" x 4" beam, weighing 9\* pounds; shot from an air cannon at (50 ft/ sec) with resulting damage not to exceed specified tolerances allowed by Section 1626.2.8.

**TAS-202: Uniform Static Air Pressure Test** - determines sufficient resistance to wind forces as determined by Florida Building Code, Section 1620 and Section 1625 for maintaining the overall envelope of the building. Test employs a sealed pressure envelope both inside and outside of the test product (allowing for both positive and negative static pressure tests) to determine if the product provides sufficient resistance to wind forces as required by Section 1620.

**TAS-203: Cyclic Wind Pressure Test** - determines sufficient resistance to fatigue failure due to repeated exposure to wind pressure as required by Florida Building Code Section 1620.0. Test employs a sealed pressure envelope to repeatedly apply (671 cycles) positive and negative static pressure forces, lasting 1 to 3 seconds each, on the product surface following completion of the missile impact test.

\* Indicates an approximate value based on a range allowed by specified test standards.

All tests were performed in the progressive manner of TAS-202, TAS-201, then TAS-203 on the same piece of equipment in an accredited independent laboratory.



**TAS-201**



**TAS-202 & TAS-203**

Miami-Dade County Product Control And Florida Building Commission Approved Products					
Style	Products	Approved Sizes	TAS-201	TAS-202	TAS-203
EXHAUST	ACEB	60-300	✓ PASSED	✓ PASSED	✓ PASSED
	ACED	70-180	✓ PASSED	✓ PASSED	✓ PASSED
	ACRUB, ACRUB-HP, ACRUB-XP	100-300	✓ PASSED	✓ PASSED	✓ PASSED
	ACSC, ACSC-HP, ACSC-XP	100-300	✓ PASSED	✓ PASSED	✓ PASSED
	ACRUD, ACRUD-HP, ACRUD-XP	70-195	✓ PASSED	✓ PASSED	✓ PASSED
	VCRD, VCRD-HP, VCRD-XP	100-195	✓ PASSED	✓ PASSED	✓ PASSED
	VCR, VCR-HP, VCR-XP	100-300	✓ PASSED	✓ PASSED	✓ PASSED
	CPS**, CPS-A**, CPV**	60-245	✓ PASSED	✓ PASSED	✓ PASSED
	TLCH-B	100-365	✓ PASSED	✓ PASSED	✓ PASSED
	TLCH-D	70-180	✓ PASSED	✓ PASSED	✓ PASSED
SUPPLY	ASP	90-200	✓ PASSED	✓ PASSED	✓ PASSED
	ASPTH	90-200	✓ PASSED	✓ PASSED	✓ PASSED
GRAVITY	GR	12x12 - 36x36	✓ PASSED	✓ PASSED	✓ PASSED
	TREH	24x24 - 48x48	✓ PASSED	✓ PASSED	✓ PASSED

\*\*Tested with Inlet Box and Curb Cap  
Texas Department of Insurance Product Evaluation Pending



Several popular Cook models have been shake table tested to a spectral response acceleration ranging to 2.5G's (SDS = 2.50). These tests were conducted in accordance with the criteria specified in ICC-ES AC156.

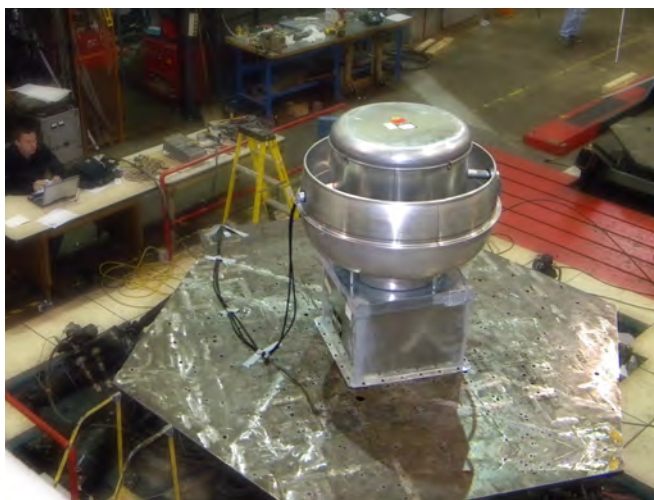
The tests were accepted by the California Office of Statewide Health Planning and Development (OSHDP) as part of the pre-approval of these products. OSHDP is the only state or federal organization that pre-approves mechanical equipment as seismically sound.

All inline fans were tested horizontally, in both ceiling hung and base mounted configurations. All roof mounted products were tested with the unit and roof curb as a complete assembly.

All Cook fans listed have been tested to exceed spectral response accelerations covering the most severe seismic conditions anywhere in the United States.

## OSHDP Pre-Approval Number

<b>Exhaust Fans:</b> ACRUD, ACRUB, ACSC, VCR & VCRD	OSP-0033-10
<b>Centrifugal Blowers:</b> CPV, CPA, CPA-A, CPS, CPS-A, CA – Arr. 9 and 10 thru size 540 CF – Arr. 9 and 10 thru size 540	OSP-0102-10
<b>Supply Fans:</b> ASP	OSP-0122-10
<b>Inline Fans:</b> QMX, QMX-HP, QMX-XP, SQN-D, SQN-B & SQN-HP	OSP-0219-10



Seismic Simulation  
Multi-Axis Shake Table Testing



## **LOREN COOK COMPANY**

2015 E. DALE STREET  
SPRINGFIELD, MO 65803-4637

417.869.6474

FAX 417.862.3820

[lorencook.com](http://lorencook.com)