

**H SERIES
DIRECT DRIVE**

H-SERIES DIRECT DRIVE

Hooded Axial Exhaust, Supply, Filtered Supply and Reversible Roof Ventilators



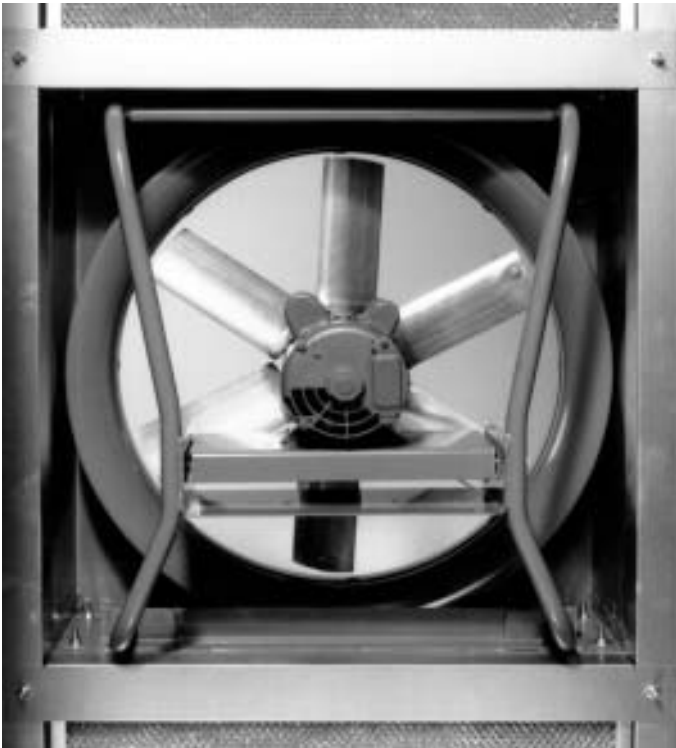
	Page
Introduction	2
Propeller and Filter Information	3
HEE-D Specifications and Dimension Data	4
HES-D Specifications and Dimension Data	5
HEF-D Specifications and Dimension Data	6
HER-D Specifications and Dimension Data	7
Accessories	8
HEE-D Exhaust	
20 HEE-D Data	9
24 HEE-D Data	10
30 HEE-D Data	11
36 HEE-D Data	12
42 HEE-D Data	13
48 HEE-D Data	14
54 HEE-D Data	15
HES-D Supply	
20 HES-D Data	16
24 HES-D Data	17
30 HES-D Data	18
36 HES-D Data	19
42 HES-D Data	20
48 HES-D Data	21
54 HES-D Data	22
HEF-D Supply Filtered	
20 HEF-D Data	23
24 HEF-D Data	24
30 HEF-D Data	25
36 HEF-D Data	26
42 HEF-D Data	27
48 HEF-D Data	28
54 HEF-D Data	29
HER-D Reversible	
20 HER-D Data	30
24 HER-D Data	31
30 HER-D Data	32
36 HER-D Data	33
42 HER-D Data	34
48 HER-D Data	35
54 HER-D Data	36

H Series - Direct Drive

Loren Cook H Series - Direct Drive Propeller Roof Ventilators are designed for industrial or commercial applications requiring a low profile roof top design. The H Series - Direct Drive is available in exhaust, supply, reversible or filtered supply configurations and utilizes an extruded aluminum airfoil propeller. The H Series - Direct Drive consists of HEE-D - Hooded Extruded Aluminum Airfoil Exhaust; HES-D - Hooded Extruded Aluminum Airfoil Supply; HEF-D - Hooded Extruded Aluminum Airfoil Filtered; and HER-D - Hooded Extruded Aluminum Airfoil Supply/Exhaust Reversible. Models are available in sizes 20 inches through 54 inches.



- Fan power assembly is of welded tubular steel construction with a Lorenized™ powder coat finish. The minimum 14 gauge steel base features an integral spun venturi and continuously welded curb cap corners.
- Galvanized steel hood features a large removable top cap allowing unobstructed access to the motor, and power assembly without removing the entire hood.
- Exhaust, supply and reversible ventilators in sizes 20 through 48 and filtered supply ventilators in sizes 20 through 42 are shipped assembled. Exhaust, supply and reversible ventilators in size 54, and filtered supply ventilators in sizes 48 and 54, are shipped with the hood in two sections for easy field assembly.
- Filtered H Series ventilators have two inch washable aluminum filters standard. Fiberglass and Polyester replaceable media filters are available as an option. Aluminum filters meet AGA requirements and are of high efficiency per AF1 test procedures.
- Motors are heavy duty type with permanently lubricated bearings.



Propeller and Filter Information **H Series**



E Series Extruded Aluminum Airfoil Propeller

The E series extruded aluminum airfoil propeller is designed for use where higher static pressures are required. This propeller design is unique to the Loren Cook Company. It is constructed with four or six aluminum blades of the extruded airfoil design, mounted in a cast aluminum hub. The pitch setting of the blades is done at the factory and the blades are locked into place by means of a roll pin. Due to the airfoil shape, the E series blade has a non-overloading characteristic such as is found in a centrifugal type wheel. The propeller is available in diameter sizes from 20 inch to 54 inch and in static pressures from 0 to 1 inch. Each propeller is statically and dynamically balanced for vibration free operation.

H Series Filter Media Data

Aluminum Media (Standard) - Expanded aluminum, washable filter media installed in a 2 inch frame.

- Initial Atmospheric Dust Spot Efficiency - < 20 percent
- Average Atmospheric Dust Spot Efficiency - < 20 percent
- Average Synthetic Dust Weight Arrestance - 54 percent

Fiberglass Media (Optional) - Laminated fiberglass replaceable media installed in a 2 inch frame.

- Initial Atmospheric Dust Spot Efficiency - < 20 percent
- Average Atmospheric Dust Spot Efficiency - < 20 percent
- Average Synthetic Dust Weight Arrestance - 84 percent

Polyester Media (Optional) - Non-woven polyester replaceable media installed in a 2 inch frame.

- Initial Atmospheric Dust Spot Efficiency - < 20 percent
- Average Atmospheric Dust Spot Efficiency - < 20 percent
- Average Synthetic Dust Weight Arrestance - 93 percent

Fan Intake Area

Fan Model (HEF-D)	Intake Area (SF)
20	16.3
24	23.5
30	31.6
36	39.6
42	47.8
48	59.3
54	70.3

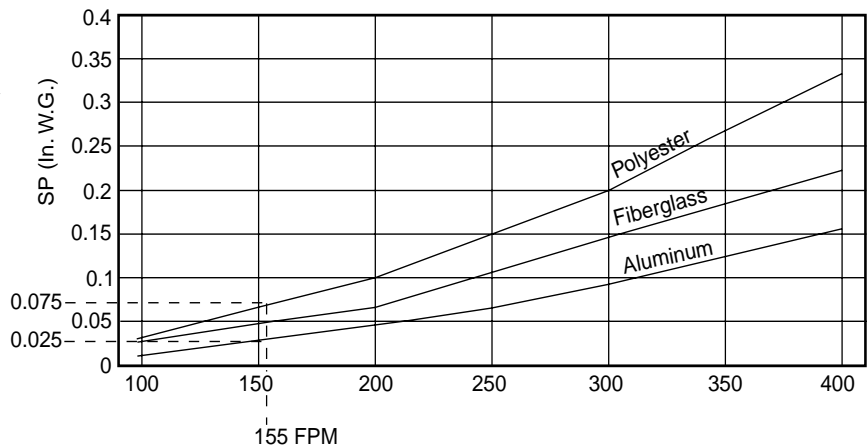
Filter Media Pressure Drop

The following information will be helpful in calculating any additional static pressure to add for optional filter media.

Example:

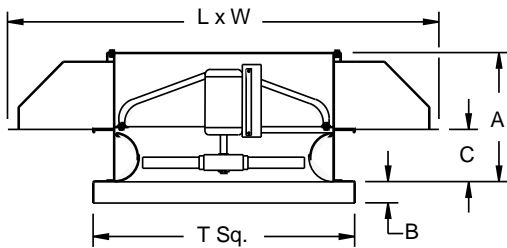
A size 24 HEF-D selected for 3640 CFM at 0.125 inch system static pressure utilizing polyester media for superior dust arrestance.

1. CFM/Intake area (SF) = Intake velocity (FPM)
3640 CFM/23.5 SF = 155 FPM.
2. Go into the pressure drop graph and determine the standard static pressure drop with aluminum media as well as the pressure drop for the optional media at intake velocity.
3. Subtract one from the other and add that number to the system static pressure. (In this case, 0.075" - 0.025" = 0.05" SP).
4. Make the selection at the new static pressure point. (In this case, 0.125" + 0.05" = 0.13").



HEE-D Specification and Dimension Data

Hooded Exhaust Airfoil Propeller Roof Mounted, Direct Drive



Type HEE-D is furnished standard with UL 705 listing (Power Ventilator/ZACT).



Type HEE-D is furnished standard with cUL 705 listing (Power Ventilator).

Description: Fan shall be a hooded, low profile, roof mounted, direct driven, propeller exhaust fan.

Certifications: Fan shall be listed by Underwriters Laboratories (UL 705) and UL listed for Canada (cUL 705).

Construction: The fan shall be of bolted and welded construction utilizing corrosion resistant fasteners. The motor shall be mounted on a welded tubular steel power assembly. The power assembly shall be rigidly secured to the fan housing. The powder coated steel fan housing shall include a minimum 14 gauge base with integral spun venturi and continuously welded curb cap corners. The fan shall be enclosed with a minimum 18 gauge galvanized steel hood bolted to the fan housing. The hood shall have a removable top cap to allow unobstructed access to the motor and power assembly without removing entire hood. The fan outlet shall be protected from entry of foreign material by 1/2 inches x 1/2 inches galvanized steel screen. Unit shall bear an engraved aluminum nameplate and shall be shipped in ISTA certified transit tested packaging.

Coating: All steel fan components shall be Lorenized™ with an electrostatically applied, baked polyester powder coating. Each component shall be subject to a five stage environmentally friendly wash system, followed by a minimum 1.5 mil thick baked powder finish. Paint must exceed 1,000 hour salt spray under ASTM B117 test method.

Propeller: Propeller shall be extruded aluminum airfoil design with cast aluminum hub. The blade pitch shall be factory set and locked using set screws and roll pin. The hub shall be keyed and locked to the shaft utilizing two set screws or a taper lock bushing. Propeller shall be balanced in accordance with AMCA Standard 204-96, *Balance Quality and Vibration Levels for Fans*.

Motor: Motor shall be heavy duty type with permanently lubricated sealed ball bearings and furnished at the specified voltage, phase and enclosure.

Product: Fan shall be the HEE-D as manufactured by Loren Cook Company of Springfield, Missouri.

HEE-D Dimension Data

Size	A	B	C	L x W	T Sq.	Material Gauge		Max. Motor Frame	Roof Opening Square*	Approx. Ship Wt.-Lbs.
						Base	Hood			
20	27-1/4	2	10	52 X 52	32	14	18	145T	27-1/2	470
24	28-3/4	3	10	59 X 59	36	14	18	184T	31-1/2	600
30	30-1/2	3	10	69 X 69	42	14	18	184T	37-1/2	680
36	33	3	10	80 X 80	48	14	18	215T	43-1/2	965
42	38	3	10	90 X 90	54	14	18	256T	49-1/2	1320
48	41-1/2	3	13-1/2	110 X 90	60	14	18	256T	55-1/2	1410
54	44-1/2	3	14-3/4	111 X 109	66	14	18	286T	61-1/2	1585

All dimensions in inches.

*Roof opening size for curbs supplied by Loren Cook Company only.

Specifications and Dimension Data **HES-D**

Description: Fan shall be a hooded, low profile, roof mounted, direct driven, propeller supply fan.

Certifications: Fan shall be listed by Underwriters Laboratories (UL 705) and UL listed for Canada (cUL 705).

Construction: The fan shall be of bolted and welded construction utilizing corrosion resistant fasteners. The motor shall be mounted on a welded tubular steel power assembly. The power assembly shall be rigidly secured to the fan housing. The powder coated steel fan housing shall include a minimum 14 gauge base with integral spun venturi and continuously welded curb cap corners. The fan shall be enclosed with a minimum 18 gauge galvanized steel hood bolted to the fan housing. The hood shall have a removable top cap to allow unobstructed access to the motor and power assembly without removing entire hood. The fan inlet shall be protected from entry of foreign material by 1/2 inches x 1/2 inches galvanized steel screen. Unit shall bear an engraved aluminum nameplate and shall be shipped in ISTA certified transit tested packaging.

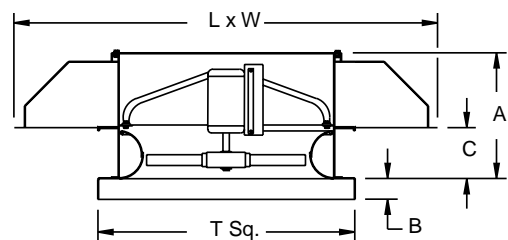
Coating: All steel fan components shall be Lorenized™ with an electrostatically applied, baked polyester powder coating. Each component shall be subject to a five stage environmentally friendly wash system, followed by a minimum 1.5 mil thick baked powder finish. Paint must exceed 1,000 hour salt spray under ASTM B117 test method.

Propeller: Propeller shall be extruded aluminum airfoil design with cast aluminum hub. The blade pitch shall be factory set and locked using set screws and roll pin. The hub shall be keyed and locked to the shaft utilizing two set screws or a taper lock bushing. Propeller shall be balanced in accordance with AMCA Standard 204-96, *Balance Quality and Vibration Levels for Fans*.

Motor: Motor shall be heavy duty type with permanently lubricated sealed ball bearings and furnished at the specified voltage, phase and enclosure.

Product: Fan shall be the HES-D as manufactured by Loren Cook Company of Springfield, Missouri.

Hooded Supply Airfoil Propeller Roof Mounted, Direct Drive



Type HES-D is furnished standard with UL 705 listing (Power Ventilator/ZACT).



Type HES-D is furnished standard with cUL 705 listing (Power Ventilator).

HES-D Dimension Data

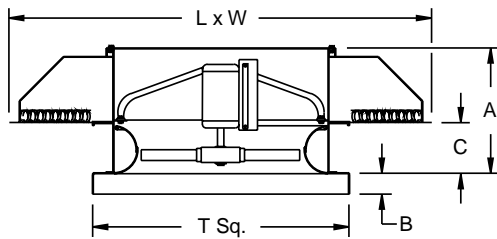
Size	A	B	C	L x W	T Sq.	Material Gauge		Max. Motor Frame	Roof Opening Square*	Ship Wt.-Lbs.
						Base	Hood			
20	27-1/4	2	10	52 x 52	32	14	18	145T	27-1/2	470
24	28-3/4	3	10	59 X 59	36	14	18	184T	31-1/2	600
30	30-1/2	3	10	69 X 69	42	14	18	184T	37-1/2	680
36	33	3	10	80 X 80	48	14	18	215T	43-1/2	965
42	38	3	10	90 X 90	54	14	18	256T	49-1/2	1320
48	41-1/2	3	13-1/2	110 X 90	60	14	18	256T	55-1/2	1410
54	44-1/2	3	14-3/4	111 X 109	66	14	18	286T	61-1/2	1585

All dimensions in inches.

*Roof opening size for curbs supplied by Loren Cook Company only.

HEF-D Specification and Dimension Data

Hooded Supply Airfoil Propeller Roof Mounted, Direct Drive



Type HEF-D is furnished standard with UL 705 listing (Power Ventilator/ZACT).



Type HEF-D is furnished standard with cUL 705 listing (Power Ventilator).

Description: Fan shall be a hooded, low profile, filtered, roof mounted, direct driven, propeller supply fan.

Certifications: Fan shall be listed by Underwriters Laboratories (UL 705) and UL listed for Canada (cUL 705).

Construction: The fan shall be of bolted and welded construction utilizing corrosion resistant fasteners. The motor shall be mounted on a welded tubular steel power assembly. The power assembly shall be rigidly secured to the fan housing. The powder coated steel fan housing shall include a minimum 14 gauge base with integral spun venturi and continuously welded curb cap corners. The fan shall be enclosed with a minimum 18 gauge galvanized steel hood bolted to the fan housing. The hood shall have a removable top cap to allow unobstructed access to the motor and power assembly without removing entire hood. Filters shall be washable expanded aluminum media with two inches formed aluminum frame. Unit shall bear an engraved aluminum nameplate and shall be shipped in ISTA certified transit tested packaging.

Coating: All steel fan components shall be Lorenized™ with an electrostatically applied, baked polyester powder coating. Each component shall be subject to a five stage environmentally friendly wash system, followed by a minimum 1.5 mil thick baked powder finish. Paint must exceed 1,000 hour salt spray under ASTM B117 test method.

Propeller: Propeller shall be extruded aluminum airfoil design with cast aluminum hub. The blade pitch shall be factory set and locked using set screws and roll pin. The hub shall be keyed and locked to the shaft utilizing two set screws or a taper lock bushing. Propeller shall be balanced in accordance with AMCA Standard 204-96, *Balance Quality and Vibration Levels for Fans*.

Motor: Motor shall be heavy duty type with permanently lubricated sealed ball bearings and furnished at the specified voltage, phase and enclosure.

Product: Fan shall be the HEF-D as manufactured by Loren Cook Company of Springfield, Missouri.

HEF-D Dimension Data

Size	A	B	C	L x W	T Sq.	Material Gauge		Max. Motor Frame	Roof Opening Square*	Ship Wt.-Lbs.
						Base	Hood			
20	28-3/4	2	10	59 X 59	32	14	18	145T	27-1/2	520
24	30-1/2	3	10	69 X 69	36	14	18	184T	31-1/2	645
30	33	3	10	80 X 80	42	14	18	184T	37-1/2	730
36	38	3	10	90 X 90	48	14	18	215T	43-1/2	1025
42	41-1/2	3	13-1/2	110 X 90	54	14	18	256T	49-1/2	1400
48	44-1/2	3	14-3/4	111 X 109	60	14	18	256T	55-1/2	1500
54	44-1/2	3	14-3/4	121 X 119	66	14	18	286T	61-1/2	1700

All dimensions in inches.

*Roof opening size for curbs supplied by Loren Cook Company only.

Specifications and Dimension Data **HER-D**

Description: Fan shall be a hooded, low profile, roof mounted, direct driven, propeller supply/exhaust reversible fan.

Certifications: Fan shall be listed by Underwriters Laboratories (UL 705) and UL listed for Canada (cUL 705).

Construction: The fan shall be of bolted and welded construction utilizing corrosion resistant fasteners. The motor shall be mounted on a welded tubular steel power assembly. The power assembly shall be rigidly secured to the fan housing. The powder coated steel fan housing shall include a minimum 14 gauge base with integral spun venturi and continuously welded curb cap corners. The fan shall be enclosed with a minimum 18 gauge galvanized steel hood bolted to the fan housing. The hood shall have a removable top cap to allow unobstructed access to the motor and power assembly without removing entire hood. The hood shall be protected from entry of foreign material by 1/2 inches x 1/2 inches galvanized steel screen. Unit shall bear an engraved aluminum nameplate and shall be shipped in ISTA certified transit tested packaging.

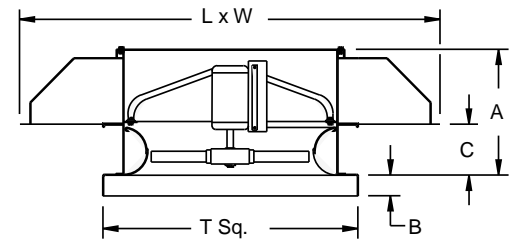
Coating: All steel fan components shall be Lorenized™ with an electrostatically applied, baked polyester powder coating. Each component shall be subject to a five stage environmentally friendly wash system, followed by a minimum 1.5 mil thick baked powder finish. Paint must exceed 1,000 hour salt spray under ASTM B117 test method.

Propeller: Propeller shall be a reversible, extruded aluminum airfoil design with cast aluminum hub. The blade pitch shall be factory set and locked using set screws and roll pin. The hub shall be keyed and locked to the shaft utilizing two set screws or a taper lock bushing. Propeller shall be balanced in accordance with AMCA Standard 204-96, *Balance Quality and Vibration Levels for Fans*.

Motor: Motor shall be heavy duty type with permanently lubricated sealed ball bearings and furnished at the specified voltage, phase and enclosure.

Product: Fan shall be the HER-D as manufactured by Loren Cook Company of Springfield, Missouri.

Hooded Supply/Exhaust Reversible Airfoil Propeller Roof Mounted, Direct Drive



Type HER-D is furnished standard with UL 705 listing (Power Ventilator/ZACT).



Type HER-D is furnished standard with cUL 705 listing (Power Ventilator).

HER-D Dimension Data

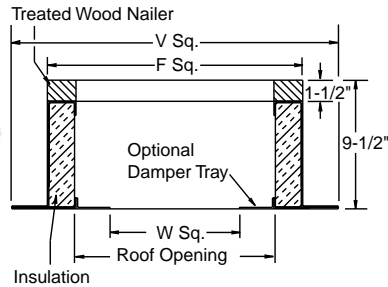
Size	A	B	C	L x W	T Sq.	Material Gauge		Max. Motor Frame	Roof Opening Square*	Ship Wt.-Lbs.
						Base	Hood			
20	27-1/4	2	10	52 x 52	32	14	18	145T	27-1/2	470
24	28-3/4	3	10	59 X 59	36	14	18	184T	31-1/2	600
30	30-1/2	3	10	69 X 69	42	14	18	184T	37-1/2	680
36	33	3	10	80 X 80	48	14	18	215T	43-1/2	965
42	38	3	10	90 X 90	54	14	18	256T	49-1/2	1320
48	41-1/2	3	13-1/2	110 X 90	60	14	18	256T	55-1/2	1410
54	44-1/2	3	14-3/4	111 X 109	66	14	18	286T	61-1/2	1585

All dimensions in inches.

*Roof opening size for curbs supplied by Loren Cook Company only.

Accessories

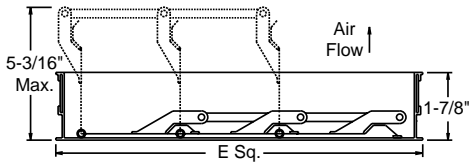
Roof Curb



H Series Size	Curb Catalog Number		F Sq.	V Sq.	W Sq.	Roof Opening	Approx. Ship Wt. Lbs.	
	Galv.	Alum.					RCG	RCA
20	RCG-30	RCA-30	30-1/2	34-1/2	23-3/4	27-1/2	37	24
24	RCG-34	RCA-34	34-1/2	38-1/2	27-3/4	31-1/2	41	27
30	RCG-40	RCA-40	40-1/2	44-1/2	33-3/4	37-1/2	49	31
36	RCG-46	RCA-46	46-1/2	50-1/2	39-3/4	43-1/2	84	63
42	RCG-52	RCA-52	52-1/2	56-1/2	45-3/4	49-1/2	94	71
48	RCG-58	RCA-58	58-1/2	62-1/2	51-3/4	55-1/2	104	79
54	RCG-64	RCA-64	64-1/2	68-1/2	57-3/4	61-1/2	115	86

All dimensions in inches. When motor operated damper is used, a wood nailer is required. Sound curbs available. Contact factory for dimensions.

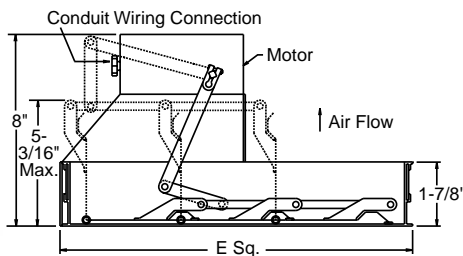
Gravity Backdraft Damper (Exhaust Models)



H Series Size	Catalog Number	E Sq.	Approx. Ship. Wt. Lbs.
20	BD-26	25-3/4	5
24	BD-30	29-3/4	6
30	BD-36	35-3/4	9
36	BD-42	41-3/4	12
42	BD-48	47-3/4	15
48	BD-54	53-3/4	19
54	BD-60	59-3/4	23

All dimensions in inches. Maximum operating temperature is 200° F (95° C). BD-36 to BD-60 are shipped as two panels.

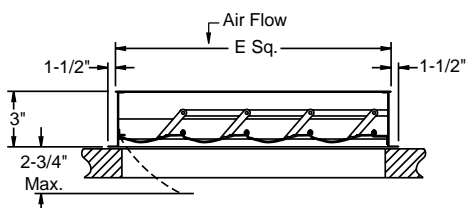
Motorized Backdraft Damper (Exhaust Models)



H Series Size	Catalog Number	E Sq.	Approx. Ship. Wt. Lbs.
20	BDM-26	25-3/4	7
24	BDM-30	29-3/4	8
30	BDM-36	35-3/4	13
36	BDM-42	41-3/4	16
42	BDM-48	47-3/4	19
48	BDM-54	53-3/4	23
54	BDM-60	59-3/4	27

All dimensions in inches. Maximum operating temperature is 130°F (50°C). BDM-36 to BDM-60 are shipped as two panels and use two motors.

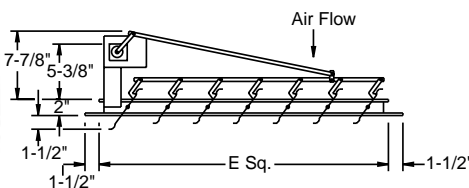
Intake Center Pivot Backdraft Damper (Supply Models)



H Series Size	Catalog Number	E Sq.	Approx. Ship Wt. Lbs.
20	BDIC-26	22-3/4	22
24	BDIC-30	26-3/4	24
30	BDIC-36	32-3/4	32
36	BDIC-42	38-3/4	49
42	BDIC-48	44-3/4	58
48	BDIC-54	50-3/4	70
54	BDIC-60	56-3/4	79

All dimensions in inches. Maximum operating temperature is 200°F (95°C).

Motorized Intake Center Pivot Backdraft Damper (Supply and Reversible Models)



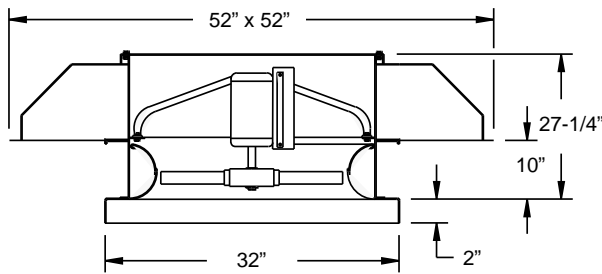
H Series Size	Catalog Number	E Sq.	Approx. Ship Wt. Lbs.
20	BDMIC-26	22-3/4	25
24	BDMIC-30	26-3/4	27
30	BDMIC-36	32-3/4	37
36	BDMIC-42	38-3/4	56
42	BDMIC-48	44-3/4	64
48	BDMIC-54	50-3/4	72
54	BDMIC-60	56-3/4	104

All dimensions in inches. Maximum operating temperature is 130°F (50°C). BDMIC-42 to BDMIC-60 use two motors.

Additional Accessories

- Aluminum hood (consult factory)
- Outboard lifting lugs

Data 20 HEE-D



Prop Diameter - 20"
Prop Type - Extruded Exhaust Aluminum Airfoil
Maximum MHP = 2
Maximum Frame = 145T
Tip Speed (FPM) = 5.24 x RPM

Base Material - 14 gauge Lorenized™ steel
Hood Material - 18 gauge galvanized steel
Outlet Area - 12.5 sq. ft.
Outlet Velocity (FPM) - (CFM/12.5)
Roof Opening Square - 27-1/2"
Matching Curb - RCG, RCA-30
Shipping Weight - 470 lbs.

20 HEE-D

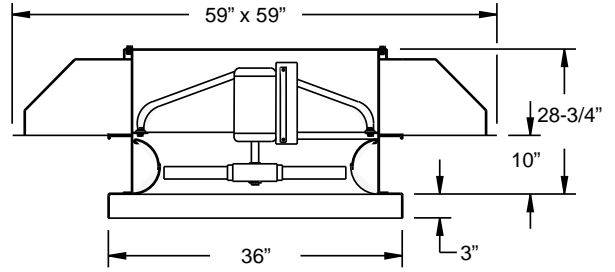
Catalog Number	RPM	HP	Max. BHP	Sones*	CFM at Static Pressure													
					0.0	0.10	0.125	0.15	0.20	0.25	0.30	0.375	0.50	0.625	0.75	0.875	1.00	
20HEE412D11	1140	1/6	0.10	13.3	2263	1860	1794	1719	1499	1228								
20HEE612D11		1/6	0.15	14.2	2304	1998	1927	1870	1741	1540	1378	1185						
20HEE414D11		1/6	0.13	13.5	2541	2142	2064	1994	1770	1571								
20HEE614D11		1/4	0.18	15.3	2467	2163	2103	2044	1922	1662	1501	1305						
20HEE416D11		1/6	0.14	13.8	2748	2330	2249	2186	1994	1777								
20HEE616D11		1/4	0.21	16.7	2742	2432	2366	2303	2185	1989	1746	1540						
20HEE418D11		1/6	0.16	14.2	2968	2548	2456	2386	2214	2012								
20HEE618D11		1/4	0.23	17.8	2939	2641	2558	2483	2365	2220	1955	1713						
20HEE420D11		1/4	0.19	14.0	3201	2778	2681	2600	2438	2187	1913							
20HEE620D11		1/3	0.26	18.2	3235	2882	2803	2731	2610	2486	2235	1910						
20HEE422D11		1/4	0.22	14.2	3361	2928	2845	2769	2615	2326	2028							
20HEE622D11		1/3	0.30	18.9	3411	3102	3019	2936	2781	2633	2453	2051						
20HEE424D11		1/4	0.24	14.5	3579	3146	3058	2970	2785	2505	2259							
20HEE624D11		1/3	0.32	19.1	3619	3286	3195	3107	2955	2825	2624	2306						
24HEE426D11		1/3	0.26	15.3	3762	3326	3237	3148	2960	2627	2400							
20HEE626D11		1/2	0.40	19.6	4105	3707	3629	3553	3395	3215	2988	2573						
20HEE428D11		1/3	0.29	16.4	3935	3487	3389	3295	3119	2831	2542							
20HEE628D11		1/2	0.37	20.0	4206	3970	3892	3803	3591	3366	2870	2482						
20HEE430D11		1/3	0.31	18.1	4048	3644	3537	3429	3203	2900	2669	2011						
20HEE630D11		1/2	0.42	22.0	4279	3982	3859	3731	3540	3417	3203	2829						
20HEE432D11		1/2	0.35	20.0	4192	3791	3672	3551	3323	3028	2765	2175						
20HEE632D11		1/2	0.45	23.0	4472	4156	4047	3929	3697	3521	3273	2863						
20HEE434D11		1/2	0.37	25.0	4302	3866	3749	3636	3434	3093	2874	2197						
20HEE634D11		1/2	0.47	25.0	4552	4222	4102	3973	3738	3571	3276	2960						
20HEE412D17		1725	1/2	0.34	25.0	3424	3120	3053	2989	2875	2777	2691	2492	2146				
20HEE612D17			3/4	0.56	26.0	3486	3299	3246	3191	3082	2982	2893	2787	2394	2214	1965	1768	
20HEE414D17			1/2	0.45	25.0	3845	3554	3488	3425	3306	3196	3097	2955	2584	2177			
20HEE614D17			3/4	0.61	28.0	3733	3495	3448	3404	3319	3239	3160	3045	2778	2390	2160	1946	
20HEE416D17	1/2		0.49	25.0	4158	3877	3803	3730	3596	3478	3379	3255	2877	2427				
20HEE616D17	3/4		0.72	31.0	4149	3923	3873	3824	3731	3642	3557	3437	3226	2805	2528	2299		
20HEE418D17	3/4		0.56	26.0	4492	4248	4173	4095	3939	3801	3686	3557	3197	2863				
20HEE618D17	1		0.79	33.0	4448	4276	4226	4173	4062	3949	3842	3701	3521	3144	2812	2560	2313	
20HEE420D17	3/4		0.66	26.0	4844	4583	4509	4434	4285	4147	4025	3877	3489	3221				
20HEE620D17	1		0.90	34.0	4896	4661	4601	4541	4425	4315	4214	4077	3888	3632	3120	2854	2580	
20HEE422D17	3/4		0.72	26.0	5086	4764	4694	4626	4499	4383	4275	4133	3770	3403				
20HEE622D17	1-1/2		1.02	35.0	5162	4968	4917	4864	4757	4648	4538	4375	4128	3870	3455	3060	2753	
20HEE424D17	3/4		0.81	26.0	5416	5085	5017	4953	4830	4711	4595	4421	4056	3657	3046			
20HEE624D17	1-1/2		1.11	36.0	5476	5275	5220	5163	5043	4921	4801	4633	4401	4149	3787	3443	3066	
20HEE426D17	1		0.90	28.0	5693	5358	5290	5226	5102	4983	4866	4688	4319	3841	3236			
20HEE626D17	1-1/2		1.39	36.0	6212	5899	5838	5780	5670	5565	5463	5312	5042	4716	4341	3809	3342	
20HEE428D17	1-1/2		1.04	30.0	5954	5639	5565	5493	5354	5221	5093	4911	4594	4098	3499			
20HEE628D17	1-1/2		1.28	38.0	6364	6227	6188	6148	6062	5966	5859	5672	5314	4832	4099	3666	3061	
20HEE430D17	1-1/2		1.15	33.0	6125	5863	5796	5729	5593	5455	5313	5095	4698	4224	3701			
20HEE630D17	1-1/2		1.47	40.0	6475	6321	6275	6224	6105	5960	5792	5552	5287	5064	4608	4179	3643	
20HEE432D17	1-1/2		1.21	37.0	6344	6103	6037	5969	5825	5671	5513	5272	4892	4392	3828	3209		
20HEE632D17	2		1.58	42.0	6767	6588	6537	6483	6364	6231	6082	5844	5489	5200	4696	4244	3757	
20HEE434D17	1-1/2		1.29	44.0	6510	6242	6169	6094	5941	5785	5631	5414	5041	4523	3867	3242		
20HEE634D17	2		1.64	46.0	6888	6706	6653	6597	6470	6324	6161	5905	5560	5246	4734	4424	3965	

Performance shown is for installation type A: free inlet, free outlet. Performance ratings do not include the effects of appurtenances in the airstream. The sound ratings shown are for loudness values in the fan sones at 5 ft. (1.5 m) in a hemispherical free field calculated per AMCA Standard 301. Values shown are for installation type A: free inlet fan sone levels. *Sone values are for maximum cataloged CFM at specified RPM.

HEE-D 24 Data

Prop Diameter - 24"
Prop Type - Extruded Exhaust
 Aluminum Airfoil
Maximum MHP = 5
Maximum Frame = 184T
Tip Speed (FPM) = 6.28 x RPM

Base Material - 14 gauge Lorenized™ steel
Hood Material - 18 gauge galvanized steel
Outlet Area - 14.9 sq. ft.
Outlet Velocity (FPM) - (CFM/14.9)
Roof Opening Square - 31-1/2"
Matching Curb - RCG, RCA-34
Shipping Weight - 600 lbs.

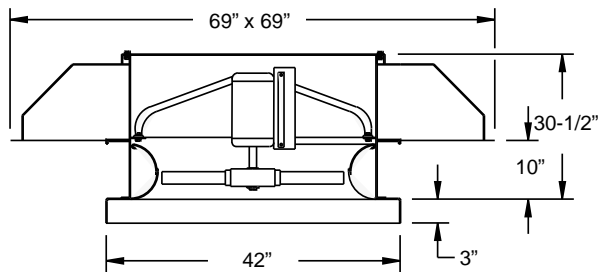


24 HEE-D

Catalog Number	RPM	HP	Max. BHP	Sones*	CFM at Static Pressure															
					0.0	0.10	0.125	0.15	0.20	0.25	0.30	0.375	0.50	0.625	0.75	0.875	1.00			
24HEE412D08	860	1/4	0.10	11.9	2914	2317	2190	1995	1608											
24HEE612D08		1/4	0.16	12.8	2967	2488	2398	2315	2000	1745	1544									
24HEE414D08		1/4	0.13	12.2	3272	2665	2554	2384	2052											
24HEE614D08		1/4	0.19	13.9	3177	2714	2621	2528	2161	1906	1700									
24HEE416D08		1/4	0.14	12.2	3538	2904	2803	2680	2316	1793										
24HEE616D08		1/4	0.22	15.0	3531	3054	2955	2863	2589	2221	2006									
24HEE418D08		1/4	0.16	12.3	3823	3171	3060	2949	2607	2007										
24HEE618D08		1/4	0.24	15.9	3785	3302	3184	3087	2883	2481	2228									
24HEE420D08		1/4	0.20	12.8	4122	3462	3334	3225	2828	2380										
24HEE620D08		1/2	0.27	16.3	4166	3617	3503	3404	3218	2790	2484	2078								
24HEE422D08		1/4	0.22	13.2	4328	3671	3552	3442	3011	2518										
24HEE622D08		1/2	0.31	16.9	4393	3896	3765	3639	3407	3112	2672	2227								
24HEE424D08		1/4	0.25	13.3	4609	3947	3808	3665	3246	2820										
24HEE624D08		1/2	0.33	17.2	4660	4123	3985	3860	3652	3334	3001	2446								
24HEE426D08		1/2	0.27	14.1	4845	4178	4037	3891	3407	3006										
24HEE412D11		1140	1/4	0.24	18.6	3862	3344	3242	3152	2994	2705	2497	1983							
24HEE612D11	1/2		0.38	19.9	3933	3574	3476	3384	3226	3105	2884	2557	2124							
24HEE414D11	1/3		0.32	18.9	4338	3835	3728	3628	3451	3251	2961	2561								
24HEE614D11	1/2		0.44	21.0	4211	3819	3744	3671	3529	3390	3212	2754	2338							
24HEE416D11	1/2		0.35	19.4	4690	4176	4055	3948	3774	3618	3303	2871								
24HEE616D11	1/2		0.50	23.0	4680	4292	4208	4128	3974	3833	3685	3268	2753							
24HEE418D11	1/2		0.39	19.8	5067	4582	4442	4316	4117	3962	3681	3358								
24HEE618D11	3/4		0.55	25.0	5017	4683	4581	4479	4287	4127	4002	3663	3052	2605						
24HEE420D11	1/2		0.46	19.6	5465	4967	4833	4706	4489	4321	4040	3681								
24HEE620D11	3/4		0.61	25.0	5523	5096	4991	4891	4709	4551	4418	4170	3392	2905						
24HEE422D11	3/4		0.51	19.8	5738	5188	5075	4969	4776	4609	4363	3900								
24HEE622D11	3/4		0.70	26.0	5823	5263	5166	5058	4875	4697	4426	3689	3101							
24HEE424D11	3/4		0.57	20.0	6110	5558	5447	5340	5130	4919	4666	4195								
24HEE624D11	1		0.78	26.0	6178	5797	5689	5578	5362	5166	5001	4748	4112	3452						
24HEE426D11	3/4		0.63	21.0	6422	5866	5755	5647	5435	5218	4968	4401								
24HEE626D11	1		0.96	27.0	7008	6494	6395	6300	6117	5933	5737	5399	4736	3764						
24HEE428D11	3/4		0.70	23.0	6717	6164	6039	5918	5688	5474	5253	4715	3629							
24HEE628D11	1		0.90	28.0	7180	6917	6838	6753	6555	6318	6057	5622	4483	3443						
24HEE430D11	1		0.79	25.0	6909	6432	6309	6184	5927	5662	5382	4840	3840							
24HEE412D17	1725		1	0.85	35.0	5844	5473	5386	5302	5145	5002	4871	4703	4404	3947	3464	2931			
24HEE612D17			1-1/2	1.32	37.0	5951	5735	5675	5613	5484	5353	5226	5050	4815	4589	4153	3826	3514		
24HEE414D17			1-1/2	1.10	35.0	6564	6208	6124	6044	5889	5743	5605	5411	5129	4683	4313	3800			
24HEE614D17			1-1/2	1.42	40.0	6373	6069	6008	5950	5840	5737	5638	5495	5262	5028	4555	4124	3835		
24HEE416D17			1-1/2	1.20	35.0	7097	6770	6682	6593	6417	6250	6096	5892	5628	5287	4813	4234	3623		
24HEE616D17		2	1.56	44.0	7082	6804	6740	6679	6560	6447	6338	6181	5932	5701	5398	4867	4467			
24HEE418D17		1-1/2	1.37	36.0	7668	7392	7312	7226	7043	6854	6673	6435	6145	5840	5356	5007	4056			
24HEE618D17		2	1.75	46.0	7592	7395	7340	7283	7160	7030	6895	6693	6392	6156	5939	5454	4993			
24HEE420D17		2	1.59	36.0	8269	7968	7885	7799	7620	7440	7265	7024	6694	6410	5806	5537	4813			
24HEE620D17		3	2.07	48.0	8357	8080	8008	7936	7793	7652	7515	7322	7034	6791	6571	6260	5635			
24HEE422D17		2	1.81	36.0	8682	8286	8196	8108	7942	7786	7639	7435	7131	6854	6222	5857	5091			
24HEE622D17		3	2.38	50.0	8812	8584	8524	8464	8340	8213	8083	7886	7560	7249	6964	6654	6267			
24HEE424D17		3	2.03	37.0	9246	8827	8740	8656	8498	8348	8203	7993	7646	7287	6737	6298	5699			
24HEE624D17		3	2.62	51.0	9348	9114	9051	8987	8852	8712	8568	8349	8000	7694	7440	7137	6708			
24HEE426D17		3	2.21	39.0	9718	9294	9206	9122	8964	8813	8668	8456	8105	738	7144	6611	6073			
24HEE626D17		5	3.41	52.0	10604	10205	10125	10048	9905	9771	9642	9456	9154	8846	8505	8112	7646			
24HEE428D17		3	2.50	42.0	10163	9781	9690	9600	9426	9257	9094	8857	8483	8139	7675	7068	6444			
24HEE628D17		5	3.13	54.0	10864	10703	10660	10616	10523	10424	10317	10141	9795	9375	8946	8395	7290			
24HEE430D17		3	2.65	47.0	10455	10143	10064	9985	9826	9664	9500	9251	8823	8380	7838	7269	6805			
24HEE630D17		5	3.57	57.0	11053	10876	10828	10774	10659	10528	10377	10104	9603	9212	8958	8698	8167			
24HEE432D17		3	2.91	52.0	10829	10548	10473	10397	10236	10068	9891	9614	9135	8686	8176	7563	7032			
24HEE632D17		5	3.84	60.0	11551	11344	11287	11229	11104	10968	10820	10574	10111	9649	9275	8934	8352			
24HEE434D17		5	3.11	64.0	11112	10798	10715	10630	10454	10273	10088	9808	9358	8964	8390	7775	7325			
24HEE634D17		5	4.00	67.0	11758	11548	11490	11430	11300	11157	10997	10728	10223	9752	9400	9036	8360			

Performance shown is for installation type A: free inlet, free outlet. Performance ratings do not include the effects of appurtenances in the airstream. The sound ratings shown are for loudness values in the fan sones at 5 ft. (1.5 m) in a hemispherical free field calculated per AMCA Standard 301. Values shown are for installation type A: free inlet fan sone levels. *Sone values are for maximum cataloged CFM at specified RPM.

Data 30 HEE-D



Prop Diameter - 30"
Prop Type - Extruded Exhaust Aluminum Airfoil
Maximum MHP = 2
Maximum Frame = 184T
Tip Speed (FPM) = 7.85 x RPM

Base Material - 14 gauge Lorenized™ steel
Hood Material - 18 gauge galvanized steel
Outlet Area - 20.5 sq. ft.
Outlet Velocity (FPM) - (CFM/20.5)
Roof Opening Square - 37-1/2"
Matching Curb - RCG, RCA-40
Shipping Weight - 680 lbs.

30 HEE-D

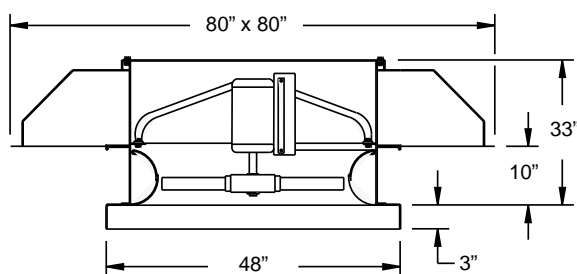
Catalog Number	RPM	HP	Max. BHP	Sones*	CFM at Static Pressure												
					0.0	0.10	0.125	0.15	0.20	0.25	0.30	0.375	0.50	0.625	0.75	0.875	1.00
30HEE412D08	860	1/2	0.31	18.1	5621	4786	4628	4495	4161	3738	3208						
30HEE612D08		1/2	0.48	19.4	5724	5125	4969	4827	4602	4342	3922	3440					
30HEE414D08		1/2	0.39	18.4	6313	5497	5328	5171	4890	4411	4058	3165					
30HEE614D08		3/4	0.53	21.0	6130	5499	5377	5259	5028	4787	4257	3744	3097				
30HEE416D08		1/2	0.43	18.5	6827	5982	5796	5633	5377	4978	4550	3606					
30HEE616D08		3/4	0.64	22.0	6812	6181	6046	5917	5372	5439	5095	4355	3662				
30HEE418D08		1/2	0.49	18.8	7375	6558	6339	6151	5873	5522	5088	4043					
30HEE618D08		3/4	0.71	24.0	7303	6737	6568	6402	6109	5884	5641	4880	4094				
30HEE420D08		3/4	0.61	19.3	7954	7123	6909	6715	6399	6080	5508	4832					
30HEE620D08		1	0.81	24.0	8038	7334	7166	7008	6727	6492	6266	5608	4567				
30HEE422D08		3/4	0.68	19.8	8351	7461	7282	7115	6819	6517	5878	5133					
30HEE622D08		1	0.92	25.0	8476	7876	7713	7549	7224	6919	6633	6119	4884				
30HEE424D08		3/4	0.74	20.0	8893	8002	7824	7649	7303	6937	6349	5660					
30HEE624D08		1-1/2	1.01	26.0	8991	8353	8172	7990	7647	7351	7100	6547	5493				
30HEE426D08		1	0.81	21.0	9347	8450	8270	8095	7743	7369	6702	6005					
30HEE626D08		1-1/2	1.26	26.0	10200	9374	9215	9062	8760	8448	8100	7452	6014				
30HEE428D08		1	0.91	23.0	9775	8874	8672	8477	8107	7763	7238	6361					
30HEE628D08		1-1/2	1.16	27.0	10450	10007	9870	9720	9364	8938	8504	7185	5731				
30HEE430D08		1	0.98	24.0	10056	9265	9060	8852	8422	7975	7393	6660					
30HEE630D08		1-1/2	1.33	29.0	10631	10101	9901	9664	9170	8805	8563	7995	6581				
30HEE432D08	1-1/2	1.08	26.0	10415	9652	9428	9195	8716	8273	7719	6902						
30HEE632D08	1-1/2	1.43	30.0	11110	10523	10334	10122	9655	9202	8848	8172	6716					
30HEE434D08	1-1/2	1.15	31.0	10688	9847	9615	9383	8940	8548	7897	7173						
30HEE634D08	1-1/2	1.48	33.0	11309	10702	10497	10265	9758	9304	8970	8181	7072					
30HEE412D11	1140	3/4	0.73	28.0	7452	6770	6620	6479	6225	6011	5817	5318	4496				
30HEE612D11		1-1/2	1.05	30.0	7587	7164	7044	6920	6677	6454	6259	6028	5334	4719	4184	3708	
30HEE414D11		1	0.92	28.0	8369	7715	7568	7427	7161	6917	6700	6362	5540	4544			
30HEE614D11		1-1/2	1.30	32.0	8125	7592	7488	7388	7200	7020	6843	6585	5884	5108	4605	4120	
30HEE416D11		1-1/2	1.03	29.0	9049	8416	8249	8087	7789	7531	7317	7035	6176	5088			
30HEE616D11		1-1/2	1.49	35.0	9029	8523	8410	8301	8093	7895	7705	7437	6929	5950	5406	4872	
30HEE418D11		1-1/2	1.17	29.0	9776	9224	9054	8876	8529	8226	7982	7694	6866	5143			
30HEE618D11		2	1.66	37.0	9680	9292	9179	9059	8807	8553	8315	8008	7602	6690	6002	5443	4811
30HEE420D11		1-1/2	1.40	29.0	10543	9954	9787	9617	9283	8977	8710	8387	7457	6902			
30HEE620D11		2	1.89	38.0	10656	10127	9992	9858	9597	9353	9128	8826	8406	7756	6662	6071	5442
30HEE422D11		2	1.54	29.0	11069	10348	10189	10038	9756	9498	9260	8944	8012	7277			
30HEE424D11		2	1.71	30.0	11788	11046	10896	10751	10476	10211	9950	9557	8665	7825	6264		
30HEE426D11		2	1.89	32.0	12390	11641	11490	11345	11068	10802	10538	10136	9202	8236	6676	3755	

Performance shown is for installation type A: free inlet, free outlet. Performance ratings do not include the effects of appurtenances in the airstream. The sound ratings shown are for loudness values in the fan sones at 5 ft. (1.5 m) in a hemispherical free field calculated per AMCA Standard 301. Values shown are for installation type A: free inlet fan sone levels. *Sone values are for maximum cataloged CFM at specified RPM.

HEE-D 36 Data

Prop Diameter - 36"
Prop Type - Extruded Exhaust
 Aluminum Airfoil
Maximum MHP = 5
Maximum Frame = 215T
Tip Speed (FPM) = 9.43 x RPM

Base Material - 14 gauge Lorenized™ steel
Hood Material - 18 gauge galvanized steel
Outlet Area - 28 sq. ft.
Outlet Velocity (FPM) - (CFM/28)
Roof Opening Square - 43-1/2"
Matching Curb - RCG, RCA-46
Shipping Weight - 965 lbs.

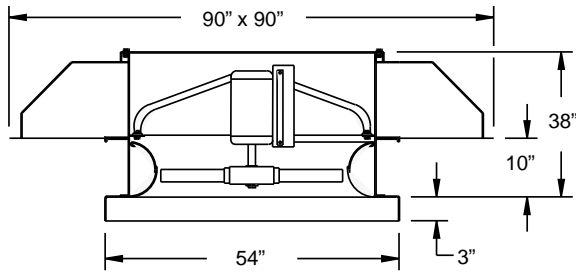


36 HEE-D

Catalog Number	RPM	HP	Max. BHP	Sones*	CFM at Static Pressure														
					0.0	0.10	0.125	0.15	0.20	0.25	0.30	0.375	0.50	0.625	0.75	0.875	1.00		
36HEE412D06	680	3/4	0.38	17.3	7618	6382	6163	5969	5303	4702									
36HEE612D06		3/4	0.61	18.7	7756	6844	6619	6420	6106	5502	5005	4329							
36HEE414D06		1/2	0.50	17.8	8555	7341	7094	6873	6370	5712	4984								
36HEE614D06		3/4	0.67	20.0	8306	7374	7193	7016	6669	6112	5393	4763							
36HEE416D06		3/4	0.54	18.1	9251	7984	7722	7502	7112	6363	5559								
36HEE616D06		1	0.76	22.0	9231	8290	8090	7899	7541	7138	6375	5582							
36HEE418D06		3/4	0.61	18.2	9994	8744	8437	8183	7794	7069	6560								
36HEE618D06		1	0.83	23.0	9896	9023	8768	8527	8121	7809	7146	6204	5078						
36HEE420D06		3/4	0.71	18.9	10778	9515	9206	8933	8501	7699	7232								
36HEE620D06		1	0.95	23.0	10893	9831	9584	9356	8956	8627	8181	6882	5664						
36HEE422D06		1	0.79	19.6	11316	9995	9734	9492	9070	8300	7653								
36HEE622D06		1-1/2	1.09	24.0	11486	10570	10323	10074	9591	9152	8691	7586	6046						
36HEE424D06		1	0.89	19.7	12051	10730	10464	10202	9674	8952	8230								
36HEE624D06		1-1/2	1.20	25.0	12185	11206	10930	10660	10165	9765	9323	8358	6712						
36HEE426D06		1	0.98	21.0	12667	11336	11068	10804	10264	9523	8637								
36HEE626D06		2	1.52	25.0	13822	12601	12366	12136	11677	11179	10598	9595	7329						
36HEE428D06		1-1/2	1.13	22.0	13247	11896	11596	11308	10770	10160	9240	7651							
36HEE628D06		1-1/2	1.41	26.0	14161	13477	13258	13014	12428	11777	10993	9064	6664						
36HEE430D06		1-1/2	1.26	24.0	13628	12427	12114	11794	11133	10385	9497	8093							
36HEE630D06		2	1.61	28.0	14407	13567	13235	12852	12171	11738	11358	10192	7985						
36HEE432D06	1-1/2	1.33	26.0	14115	12940	12593	12233	11527	10820	9883	8391								
36HEE632D06	2	1.73	29.0	15056	14144	13840	13501	12787	12176	11665	10379	8250							
36HEE434D06	1-1/2	1.42	30.0	14484	13198	12846	12499	11868	11137	10156	8464								
36HEE634D06	2	1.80	32.0	15326	14378	14046	13673	12919	12337	11807	10481	8687							
36HEE412D08	860	3/4	0.75	25.0	9634	8576	8353	8149	7795	7458	6950	6270							
36HEE612D08		1-1/2	1.22	27.0	9810	9122	8926	8731	8370	8061	7822	7245	6173	5334					
36HEE414D08		1	0.98	26.0	10820	9802	9578	9366	8971	8626	8275	7416	6017						
36HEE614D08		1-1/2	1.38	29.0	10505	9693	9536	9385	9097	8817	8544	8055	6671	5871	5043				
36HEE416D08		1-1/2	1.09	26.0	11700	10685	10429	10188	9765	9428	9132	8291	6716						
36HEE616D08		2	1.58	31.0	11674	10887	10714	10549	10231	9929	9646	9219	7798	6908	6021				
36HEE418D08		1-1/2	1.25	26.0	12640	11727	11445	11166	10670	10286	9983	9233	7759						
36HEE618D08		2	1.73	33.0	12516	11881	11691	11492	11088	10713	10387	10003	8754	7659	6780				
36HEE420D08		1-1/2	1.47	27.0	13631	12674	12404	12137	11642	11218	10881	10149	9013						
36HEE620D08		2	1.97	34.0	13777	12935	12722	12514	12121	11765	11445	11039	10138	8508	7563				
36HEE422D08		2	1.61	27.0	14312	13193	12953	12727	12309	11932	11600	10943	9508						
36HEE622D08		3	2.25	35.0	14526	13825	13637	13445	13055	12662	12278	11744	10826	9279	8073				
36HEE424D08		2	1.80	28.0	15241	14105	13876	13656	13233	12818	12403	11694	10220						
36HEE624D08		3	2.47	36.0	15410	14677	14471	14258	13823	13397	13002	12498	11605	10322	9053				
36HEE426D08		2	1.99	29.0	16020	14873	14643	14422	13997	13579	13154	12447	10740						
36HEE626D08		3	2.22	31.0	16754	15645	15390	15142	14665	14211	13781	13145	11439	9184					
36HEE428D08		3	2.84	38.0	17910	17406	17261	17107	16767	16374	15918	15147	13383	11245	9232	7339			
36HEE628D08		3	2.50	33.0	17235	16296	16056	15813	15319	14813	14290	13474	11812	9715					
36HEE430D08		3	2.66	37.0	17851	16975	16728	16471	15926	15356	14787	13994	12275	10166					
36HEE634D08		3	2.83	44.0	18318	17344	17076	16802	16246	15699	15193	14474	12661	10235					
36HEE412D11	1140	2	1.78	39.0	12771	11936	11741	11553	11202	10883	10593	10224	9485	8516	7338				
36HEE612D11		3	2.84	42.0	13003	12517	12381	12240	11949	11653	11368	10979	10467	9897	8938	8203	7520		
36HEE414D11		3	2.30	39.0	14343	13542	13355	13174	12827	12500	12191	11760	11127	10053	9259	8016			
36HEE614D11		5	3.08	45.0	13926	13244	13107	12977	12732	12501	12280	11959	11437	10896	9712	8862	8235		
36HEE416D11		3	2.54	40.0	15509	14770	14570	14370	13974	13601	13260	12811	12230	11354	10370	8942	7587		
36HEE616D11		5	3.40	49.0	15475	14850	14707	14570	14304	14050	13806	13453	12899	12375	11618	10369	9611		
36HEE418D11		3	2.91	41.0	16755	16132	15949	15755	15339	14913	14512	13991	13357	12586	11585	10432	8492		
36HEE618D11		5	3.74	53.0	16590	16144	16017	15889	15612	15316	15010	14559	13895	13384	12846	11636	10718		
36HEE420D11		5	3.41	41.0	18069	17390	17201	17006	16603	16197	15806	15272	14555	13854	12543	11966	10057		
36HEE620D11		5	4.37	54.0	18262	17636	17475	17312	16989	16673	16367	15936	15297	14764	14259	13470	11921		
36HEE422D11		5	3.75	41.0	18972	18082	17879	17683	17310	16962	16635	16179	15508	14836	13388	12629	10649		
36HEE624D11		5	4.30	42.0	20204	19264	19069	18882	18528	18191	17867	17394	16611	15789	14473	13573	11982		
36HEE426D11		5	4.72	45.0	21236	20285	20089	19901	19545	19208	18882	18406	17612	16772	15288	14261	12706		

Performance shown is for installation type A: free inlet, free outlet. Performance ratings do not include the effects of appurtenances in the airstream. The sound ratings shown are for loudness values in the fan sones at 5 ft. (1.5 m) in a hemispherical free field calculated per AMCA Standard 301. Values shown are for installation type A: free inlet fan sone levels. *Sone values are for maximum cataloged CFM at specified RPM.

Data 42 HEE-D



Prop Diameter - 42"
Prop Type - Extruded Exhaust
 Aluminum Airfoil
Maximum MHP = 10
Maximum Frame = 256T
Tip Speed (FPM) = 11.00 x RPM

Base Material - 14 gauge Lorenized™ steel
Hood Material - 18 gauge galvanized steel
Outlet Area - 35.5 sq. ft.
Outlet Velocity (FPM) - (CFM/35.5)
Roof Opening Square - 49-1/2"
Matching Curb - RCG, RCA-52
Shipping Weight - 1320 lbs.

42 HEE-D

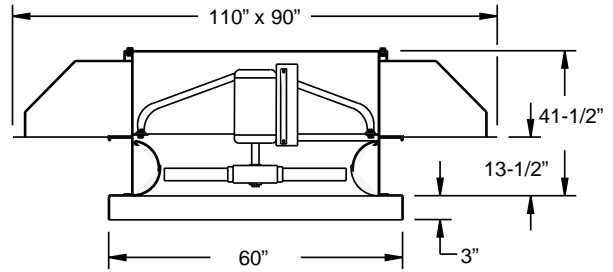
Catalog Number	RPM	HP	Max. BHP	Sones*	CFM at Static Pressure													
					0.0	0.10	0.125	0.15	0.20	0.25	0.30	0.375	0.50	0.625	0.75	0.875	1.00	
42HEE414D06	680	1	0.93	23.0	13757	12033	11714	11422	10918	10452	9536	7758						
42HEE614D06		1-1/2	1.27	27.0	14010	13120	12898	12673	12215	11738	11219	10128	8859	7247				
42HEE416D06		1-1/2	1.03	24.0	14526	12957	12725	12496	12012	11417	10491	8865						
42HEE616D06		2	1.60	28.0	15256	13853	13625	13412	13015	12642	12289	11464	9721	8982				
42HEE418D06		1-1/2	1.21	24.0	15484	14159	13867	13586	13050	12540	11767	10092						
42HEE618D06		2	1.70	30.0	16777	15774	15440	15091	14442	13931	13561	12919	10572	8861				
42HEE420D06		1-1/2	1.37	25.0	15956	14885	14670	14456	14003	13399	12533	11028						
42HEE620D06		2	1.94	31.0	17841	16799	16520	16239	15679	15141	14656	13936	11423	9258	6914			
42HEE422D06		2	1.60	26.0	17826	16210	15911	15619	15028	14372	13318	11653	10555					
42HEE622D06		3	2.29	32.0	19260	18097	17801	17504	16909	16315	15730	14838	12737	10251	7887			
42HEE424D06		2	1.73	26.0	18532	16939	16477	16037	15281	14707	13722	12007	10019					
42HEE624D06		3	2.46	32.0	19772	18519	18217	17916	17314	16700	16045	15319	13706	10770	7755	5735		
42HEE426D06		2	1.97	27.0	19089	17670	17335	17012	16406	15875	15045	12970	9154					
42HEE626D06		3	2.67	33.0	20753	19238	18967	18706	18201	17690	17133	16079	14231	10770	8312	6236		
42HEE428D06		3	2.18	29.0	20184	18627	18245	17867	17121	16409	15526	13331	11978					
42HEE430D06		3	2.48	31.0	21099	19333	19019	18707	18050	17110	15972	14497	10824					
42HEE432D06	3	2.73	34.0	21530	19915	19544	19170	18373	17370	15913	14707	12424						
42HEE414D08	860	2	1.89	33.0	17398	15906	15605	15324	14814	14358	13952	13410	11668	9319				
42HEE614D08		3	2.63	38.0	17718	17013	16838	16663	16311	15956	15595	15036	14000	12259	11419	10776	9153	
42HEE416D08		3	2.08	34.0	18371	16859	16655	16461	16092	15730	15355	14695	12903	10556				
42HEE418D08		5	3.23	41.0	19295	18006	17793	17595	17232	16897	16581	16132	15425	14098	12465	12025	11356	
42HEE418D08		3	2.45	34.0	19583	18490	18241	18000	17538	17094	16666	16066	14520	12542				
42HEE618D08		5	3.42	44.0	21218	20501	20283	20047	19527	18975	18454	17802	17038	16074	13754	12809	11200	
42HEE420D08		3	2.80	35.0	20180	19254	19070	18894	18552	18213	17861	17207	15484	13554				
42HEE620D08		5	3.96	45.0	22563	21760	21548	21333	20893	20448	20004	19357	18388	17411	15771	13503	11704	
42HEE422D08		5	3.26	36.0	22544	21110	20848	20598	20122	19660	19196	18451	16328	14557	13804			
42HEE622D08		5	4.63	47.0	24358	23444	23213	22980	22513	22043	21572	20866	19713	18492	16883	14852	12959	
42HEE424D08		5	3.56	37.0	23438	22273	21928	21569	20837	20148	19543	18813	16586	14968	13867			
42HEE624D08		5	4.98	48.0	25005	24002	23758	23517	23038	22563	22087	23168	20102	19208	18186	15955	13614	
42HEE426D08		5	3.98	39.0	24142	23006	22728	22454	21923	21415	20933	20288	18416	15987	12829			
42HEE626D08		7-1/2	5.41	49.0	26246	24892	24648	24418	23987	23577	23177	22577	21460	20044	18556	16814	13615	
42HEE428D08		5	4.42	42.0	25526	24288	23982	23678	23074	22477	21886	21021	18985	16634	15702			
42HEE628D08		7-1/2	6.16	51.0	27830	26987	26749	26497	25954	25355	24704	23678	22124	20823	19392	17554	14868	
42HEE430D08	7-1/2	5.07	45.0	26684	25081	24809	24550	24052	23559	23046	22102	19868	17933	15143	11497			
42HEE630D08	7-1/2	6.84	54.0	29023	27591	27342	27106	26658	26230	25806	25151	23694	21740	20557	18229	15469		
42HEE432D08	7-1/2	5.54	49.0	27229	25900	25599	25303	24717	24122	23499	22399	19764	18328	16755	12279			
42HEE414D11	1140	5	4.22	53.0	23063	21849	21584	21332	20860	20426	20023	19469	18650	17963	17147	15515	13759	
42HEE614D11		7-1/2	6.14	61.0	23487	22953	22821	22688	22424	22160	21895	21496	20821	20124	19396	18584	17574	
42HEE416D11		5	4.86	55.0	24353	22875	22689	22517	22195	21898	21615	21203	20514	19721	18705	17153	15684	
42HEE616D11		7-1/2	6.65	67.0	25577	24428	24229	24043	23709	23403	23119	22719	22107	21535	20997	20464	19718	
42HEE418D11		7-1/2	5.70	56.0	25959	25104	24902	24707	24326	23959	23603	23087	22266	21502	20682	19299	17382	
42HEE618D11		10	7.97	72.0	28126	27621	27481	27335	27021	26675	26297	25688	24668	23803	23134	22600	22007	
42HEE420D11		7-1/2	6.46	55.0	26750	25976	25820	25668	25385	25116	24856	24473	23825	23057	22040	20575	19074	
42HEE620D11		10	9.04	74.0	29910	29317	29162	29008	28691	28367	28038	27538	26698	25876	25094	24395	23691	
42HEE422D11		10	7.54	56.0	29884	28648	28415	28197	27786	27405	27039	26509	25637	24725	23666	21711	19906	
42HEE424D11		10	8.30	57.0	31069	30244	30015	29778	29274	28740	28188	27368	26141	25153	24334	22070	20538	
42HEE426D11		10	9.29	61.0	32002	31141	30927	30714	30292	29877	29470	28877	27942	27105	26296	24513	22384	

Performance shown is for installation type A: free inlet, free outlet. Performance ratings do not include the effects of appurtenances in the airstream. The sound ratings shown are for loudness values in the fan sones at 5 ft. (1.5 m) in a hemispherical free field calculated per AMCA Standard 301. Values shown are for installation type A: free inlet fan sone levels. *Some values are for maximum cataloged CFM at specified RPM.

HEE-D 48 Data

Prop Diameter - 48"
Prop Type - Extruded Exhaust
 Aluminum Airfoil
Maximum MHP = 10
Maximum Frame = 256T
Tip Speed (FPM) = 12.57 x RPM

Base Material - 14 gauge Lorenized™ steel
Hood Material - 18 gauge galvanized steel
Outlet Area - 43.2 sq. ft.
Outlet Velocity (FPM) - (CFM/43.2)
Roof Opening Square - 55-1/2"
Matching Curb - RCG, RCA-58
Shipping Weight - 1410 lbs.

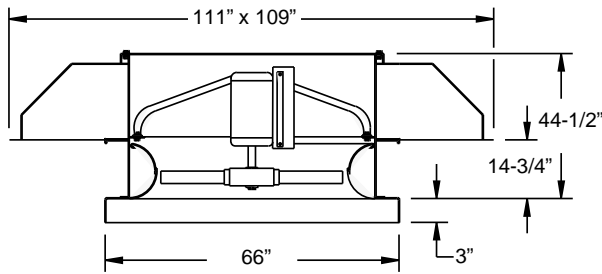


48 HEE-D

Catalog Number	RPM	HP	Max. BHP	Sones*	CFM at Static Pressure													
					0.0	0.10	0.125	0.15	0.20	0.25	0.30	0.375	0.50	0.625	0.75	0.875	1.00	
48HEE414D06	680	2	1.82	30.0	20467	18388	17984	17610	16937	16353	15834	14639	11227					
48HEE614D06		3	2.53	34.0	20843	19826	19574	19320	18808	18286	17748	16890	14650	13350	12261			
48HEE416D06		2	1.99	30.0	21612	19613	19334	19067	18544	17998	17362	16007	12783					
48HEE418D06		3	2.35	30.0	23037	21485	21137	20801	20156	19540	18964	17859	14869					
48HEE420D06		3	2.67	31.0	23739	22453	22199	21951	21462	20953	20320	19006	16159					
48HEE414D08	860	5	3.54	43.0	25884	24112	23740	23390	22743	22158	21622	20895	19853	17951	15226	12477		
48HEE614D08		7-1/2	5.09	50.0	26360	25554	25354	25154	24754	24353	23949	23333	22271	21113	19612	17575	16881	
48HEE416D08		5	4.00	44.0	27332	25387	25132	24895	24452	24030	23617	22988	21733	19747	17438	13635		
48HEE616D08		7-1/2	5.92	54.0	28706	27111	26843	26594	26137	25722	25332	24782	23925	23126	22024	19159	18453	
48HEE418D08		5	4.75	44.0	29135	27863	27569	27284	26732	26202	25690	24950	23796	22147	19387	17993		
48HEE618D08		7-1/2	6.65	57.0	31567	30779	30552	30311	29775	29183	28554	27638	26390	25519	24627	22939	20244	
48HEE420D08		7-1/2	5.52	46.0	30023	28912	28691	28478	28174	27684	27298	26706	25468	23570	21274	17861		
48HEE422D08		7-1/2	6.31	47.0	33541	31794	31472	31167	30594	30051	29521	28730	27311	25069	22244	21253	20329	
48HEE424D08		7-1/2	6.90	48.0	34870	33584	33216	32830	32014	31177	30369	29282	27880	25833	22950	21763	20246	
48HEE414D11		1140	10	8.11	70.0	34312	32891	32571	32265	31686	31145	30639	29933	28875	27933	27123	26341	25261
48HEE416D11	10		9.41	72.0	36321	34320	34080	33866	33465	33098	32753	32260	31475	30691	29832	28840	27557	

Performance shown is for installation type A: free inlet, free outlet. Performance ratings do not include the effects of appurtenances in the airstream. The sound ratings shown are for loudness values in the fan sones at 5 ft. (1.5 m) in a hemispherical free field calculated per AMCA Standard 301. Values shown are for installation type A: free inlet fan sone levels. *Sone values are for maximum cataloged CFM at specified RPM.

Data 54 HEE-D



Prop Diameter - 54"
Prop Type - Extruded Exhaust
 Aluminum Airfoil
Maximum MHP = 10
Maximum Frame = 286T
Tip Speed (FPM) = 14.16 x RPM

Base Material - 14 gauge Lorenized™ steel
Hood Material - 18 gauge galvanized steel
Outlet Area - 54.3 sq. ft.
Outlet Velocity (FPM) - (CFM/54.3)
Roof Opening Square - 61-1/2"
Matching Curb - RCG, RCA-64
Shipping Weight - 1585 lbs.

54 HEE-D

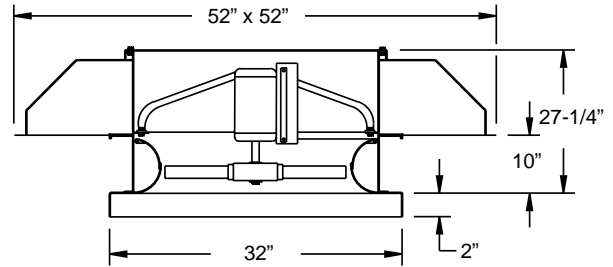
Catalog Number	RPM	HP	Max. BHP	Sones*	CFM at Static Pressure												
					0.0	0.10	0.125	0.15	0.20	0.25	0.30	0.375	0.50	0.625	0.75	0.875	1.00
54HEE414D06	680	5	3.26	37.0	29066	26632	26139	25680	24842	24091	23417	22534	19942	16158			
54HEE614D06		5	4.50	42.0	29600	28456	28172	27888	27317	26742	26157	25254	23614	21050	19227	18268	16403
54HEE416D06		5	3.55	38.0	30692	28204	27871	27555	26953	26367	25767	24719	21990	18434			
54HEE418D06		5	4.22	38.0	32716	30937	30533	30140	29385	28662	27965	26984	24693	21210	18616		
54HEE420D06		5	4.77	39.0	33713	32201	31902	31614	31059	30529	29994	28922	26293	23115	17107		
54HEE414D08	860	7-1/2	6.59	55.0	36759	34710	34266	33843	33057	32335	31669	30753	29419	28261	26471	23424	20427
54HEE614D08		10	8.55	63.0	37436	36528	36303	36078	35629	35179	34782	34048	32892	31694	30419	28900	26611
54HEE416D08		7-1/2	7.22	55.0	38816	36381	36068	35781	35248	34751	34275	33577	32380	30951	28912	26255	23303
54HEE616D08		10	9.90	69.0	40767	38847	38519	38213	37656	37145	36671	36009	34986	34028	33131	32159	30398
54HEE418D08		10	8.53	56.0	41376	39926	39587	39256	38614	37996	37397	36530	35149	33866	32218	29154	26821
54HEE420D08	10	9.66	58.0	42637	41333	41073	40822	40431	39893	39453	38803	37682	36260	34288	31515	29228	

Performance shown is for installation type A: free inlet, free outlet. Performance ratings do not include the effects of appurtenances in the airstream. The sound ratings shown are for loudness values in the fan sones at 5 ft. (1.5 m) in a hemispherical free field calculated per AMCA Standard 301. Values shown are for installation type A: free inlet fan sone levels. *Sone values are for maximum cataloged CFM at specified RPM.

HES-D 20 Data

Prop Diameter - 20"
Prop Type - Extruded Supply
 Aluminum Airfoil
Maximum MHP = 2
Maximum Frame = 145T
Tip Speed (FPM) = 5.24 x RPM

Base Material - 14 gauge Lorenized™ steel
Hood Material - 18 gauge galvanized steel
Intake Area - 12.5 sq. ft.
Intake Velocity (FPM) - (CFM/12.5)
Roof Opening Square - 27-1/2"
Matching Curb - RCG, RCA-30
Shipping Weight - 470 lbs.

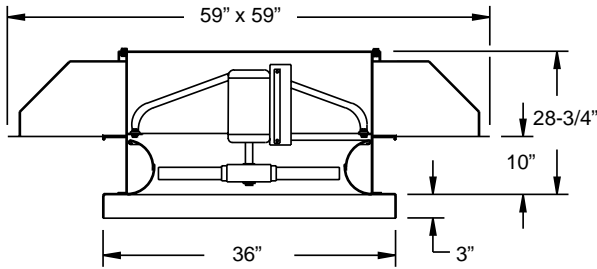


20 HES-D

Catalog Number	RPM	HP	Max. BHP	Sones*	CFM at Static Pressure													
					0.0	0.10	0.125	0.15	0.20	0.25	0.30	0.375	0.50	0.625	0.75	0.875	1.00	
20HES412D11	1140	1/6	0.09	13.3	2315	1984	1891	1776	1425	1054	842							
20HES612D11		1/6	0.14	14.2	2372	2167	2073	1982	1763	1456	1266	1039						
20HES414D11		1/6	0.13	13.5	2626	2297	2194	2098	1696	1431	1084							
20HES614D11		1/4	0.17	15.3	2545	2325	2254	2176	2006	1579	1393	1162						
20HES416D11		1/6	0.14	13.8	2832	2509	2398	2306	1947	1673	1257							
20HES616D11		1/4	0.20	16.7	2840	2616	2539	2454	2290	1936	1641	1389	885					
20HES418D11		1/6	0.15	14.2	3065	2761	2629	2523	2201	1913	1425	990						
20HES618D11		1/4	0.22	17.8	3038	2850	2776	2683	2497	2237	1850	1571	1057					
20HES420D11		1/4	0.19	14.0	3310	2995	2879	2762	2498	2088	1750	1140						
20HES620D11		1/4	0.25	18.2	3355	3102	3021	2935	2760	2561	2127	1778	1216					
20HES422D11		1/4	0.21	14.2	3485	3152	3050	2945	2699	2222	1880	1221						
20HES622D11		1/3	0.28	18.9	3529	3334	3262	3173	2950	2725	2374	1841	1327					
20HES424D11		1/4	0.23	14.5	3688	3384	3283	3167	2911	2396	2104	1366						
20HES624D11		1/3	0.31	19.1	3741	3528	3450	3356	3138	2941	2543	2158	1445					
20HES426D11		1/4	0.25	15.3	3895	3575	3475	3364	3100	2518	2252	1493						
20HES626D11		1/2	0.34	19.6	4047	3856	3786	3701	3460	3213	2806	2373	1580					
20HES428D11		1/3	0.28	16.4	4069	3757	3649	3526	3266	2721	2392	1652						
20HES628D11		1/2	0.37	20.0	4206	3970	3892	3803	3591	3366	2870	2482	1645					
20HES430D11		1/3	0.30	18.1	4184	3918	3816	3684	3365	2794	2530	1748						
20HES630D11		1/2	0.41	22.0	4434	4237	4160	4057	3766	3580	3137	2674	1780	1016				
20HES432D11	1/3	0.33	20.0	4341	4073	3963	3815	3494	2937	2613	1908							
20HES632D11	1/2	0.44	23.0	4620	4406	4330	4234	3957	3700	3233	2700	1870	1137					
20HES434D11	1/2	0.35	25.0	4457	4156	4036	3886	3594	2975	2724	1917							
20HES634D11	1/2	0.45	25.0	4713	4484	4399	4292	3989	3740	3174	2799	1895	1079					
20HES412D17	1725	1/3	0.31	25.0	3503	3332	3277	3218	3084	2948	2827	2451	1986	1445	1095			
20HES612D17		1/2	0.48	26.0	3589	3487	3456	3421	3339	3231	3099	2938	2391	2068	1774	1541	1230	
20HES414D17		1/2	0.42	25.0	3973	3787	3734	3677	3553	3419	3286	3086	2461	1903	1386			
20HES614D17		3/4	0.60	28.0	3850	3721	3686	3648	3568	3480	3383	3228	2791	2247	1977	1724	1428	
20HES416D17		1/2	0.48	25.0	4285	4115	4064	4007	3879	3734	3592	3414	2752	2176	1649			
20HES616D17		3/4	0.69	31.0	4297	4170	4134	4096	4012	3918	3812	3647	3343	2667	2344	2063	1747	
20HES418D17		3/4	0.55	26.0	4637	4489	4443	4391	4266	4106	3931	3740	3071	2176	1649	1436		
20HES618D17		1	0.77	33.0	4598	4494	4465	4432	4360	4274	4169	3974	3685	3013	2635	2337	2022	
20HES420D17		3/4	0.61	26.0	5008	4839	4789	4735	4613	4470	4312	4096	3369	3055	2217	1659		
20HES620D17		1	0.87	34.0	5076	4927	4886	4843	4750	4650	4541	4366	4082	3640	2944	2647	2290	
20HES422D17		3/4	0.71	26.0	5273	5075	5021	4964	4843	4714	4577	4371	3658	3230	2370	1780	1261	
20HES622D17		1	0.95	35.0	5341	5231	5199	5166	5093	5008	4907	4714	4349	3904	3274	2739	2414	
20HES424D17		1	0.78	26.0	5580	5404	5356	5304	5192	5067	4927	4693	4059	3474	2680	1999	1482	
20HES624D17		1	0.97	36.0	5660	5541	5506	5470	5390	5298	5189	4989	4645	4210	3614	3208	2736	
20HES426D17		1	0.86	28.0	5893	5701	5649	5595	5481	5356	5220	4989	4392	3656	2864	2196	1702	
20HES626D17		1-1/2	1.19	36.0	6123	6014	5984	5951	5881	5798	5701	5513	5107	4597	4014	3504	2937	
20HES428D17		1	1.00	30.0	6156	5979	5928	5875	5759	5627	5479	5226	4720	3903	3186	2431	1899	
20HES628D17		1-1/2	1.28	38.0	6364	6227	6188	6148	6062	5966	5859	5672	5314	4832	4099	3666	3061	
20HES430D17		1-1/2	1.12	33.0	6332	6183	6142	6096	5995	5876	5730	5443	4848	4036	3410	2568	2036	
20HES630D17		1-1/2	1.42	40.0	6710	6600	6569	6535	6461	6373	6262	6028	5594	5241	4410	3928	3271	
20HES432D17	1-1/2	1.18	37.0	6569	6423	6381	6335	6233	6108	5949	5622	5088	4195	3536	2795	2140		
20HES632D17	2	1.53	42.0	6991	6869	6835	6799	6719	6628	6520	6310	5828	5407	4500	3974	3382		
20HES434D17	1-1/2	1.25	44.0	6745	6581	6534	6483	6366	6227	6056	5752	5159	4320	3546	2814	2169		
20HES634D17	2	1.57	46.0	7131	7002	6965	6926	6841	6740	6621	6384	5891	5381	4532	4168	3571		

Performance shown is for installation type A: free inlet, free outlet. Performance ratings do not include the effects of appurtenances in the airstream. The sound ratings shown are for loudness values in the fan sones at 5 ft. (1.5 m) in a hemispherical free field calculated per AMCA Standard 301. Values shown are for installation type A: free inlet fan sone levels. *Sone values are for maximum cataloged CFM at specified RPM.

Data 24 HES-D



Prop Diameter - 24"
Prop Type - Extruded Supply
Aluminum Airfoil
Maximum MHP = 5
Maximum Frame = 184T
Tip Speed (FPM) = 6.28 x RPM

Base Material - 14 gauge Lorenized™ steel
Hood Material - 18 gauge galvanized steel
Intake Area - 14.9 sq. ft.
Intake Velocity (FPM) - (CFM/14.9)
Roof Opening Square - 31-1/2"
Matching Curb - RCG, RCA-34
Shipping Weight - 600 lbs.

24 HES-D

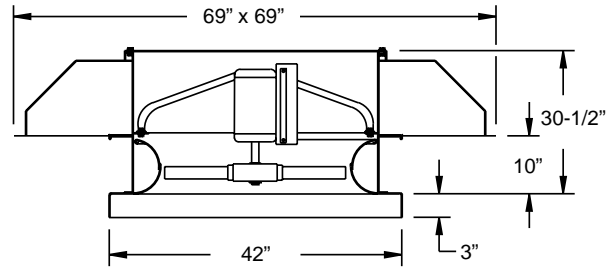
Catalog Number	RPM	HP	Max. BHP	Sones*	CFM at Static Pressure													
					0.0	0.10	0.125	0.15	0.20	0.25	0.30	0.375	0.50	0.625	0.75	0.875	1.00	
24HES412D08	860	1/4	0.09	11.9	2982	2444	2242	1381	1044									
24HES612D08		1/4	0.14	12.8	3055	2680	2539	2416	1894	1596	1359							
24HES414D08		1/4	0.13	12.2	3381	2836	2682	2346	1897	1336								
24HES614D08		1/4	0.18	13.9	3277	2910	2787	2658	2058	1762	1519							
24HES416D08		1/4	0.14	12.2	3647	3099	2953	2756	2190	1559	1076							
24HES616D08		1/4	0.21	15.0	3657	3278	3144	3017	2546	2080	1817	1359						
24HES418D08		1/4	0.16	12.3	3947	3398	3231	3063	2481	1756	1314							
24HES618D08		1/4	0.23	15.9	3913	3583	3436	3278	2932	2341	2051	1590						
24HES420D08		1/4	0.19	12.8	4262	3720	3537	3375	2703	2146	1514							
24HES620D08		1/2	0.26	16.3	4320	3899	3762	3620	3326	2644	2319	1801						
24HES422D08		1/4	0.22	13.2	4487	3938	3772	3606	2879	2302	1619							
24HES622D08		1/2	0.30	16.9	4545	4209	4067	3885	3537	2981	2406	1935						
24HES424D08		1/4	0.25	13.3	4749	4238	4055	3861	3107	2584	1809	1042						
24HES624D08		1/2	0.32	17.2	4817	4452	4302	4124	3813	3204	2818	2138						
24HES426D08		1/2	0.27	14.1	5015	4486	4309	4108	3269	2788	1969	1215						
24HES626D08		1/2	0.36	17.6	5211	4884	4747	4557	4165	3542	3121	2309						
24HES412D11	1140	1/4	0.22	18.6	3952	3601	3478	3352	3130	2600	2360	1705	1031					
24HES612D11		1/2	0.34	19.9	4049	3842	3766	3671	3436	3255	2804	2401	1892	1381				
24HES414D11		1/3	0.30	18.9	4482	4120	4007	3886	3648	3329	2828	2270	1341					
24HES614D11		1/2	0.43	21.0	4344	4098	4024	3945	3769	3579	3311	2602	2114	1605				
24HES416D11		1/2	0.34	19.4	4834	4493	4375	4245	3998	3777	3173	2630	1628					
24HES616D11		1/2	0.49	23.0	4848	4602	4525	4441	4249	4052	3844	3122	2523	1966	1291			
24HES418D11		1/2	0.38	19.8	5231	4927	4811	4669	4370	4145	3565	3175	1909					
24HES618D11		3/4	0.54	25.0	5187	4985	4918	4841	4647	4404	4206	3560	2837	2276	1586			
24HES420D11		1/2	0.43	19.6	5650	5315	5203	5075	4790	4542	3948	3502	2204	1191				
24HES620D11		3/4	0.59	25.0	5726	5443	5358	5268	5070	4856	4654	4241	3184	2577	1859			
24HES422D11		1/2	0.49	19.8	5949	5573	5463	5346	5098	4850	4365	3714	2357	1413				
24HES622D11		3/4	0.68	26.0	6025	5812	5745	5669	5482	5229	4966	4523	3385	2718	2038	1110		
24HES424D11		3/4	0.55	20.0	6295	5958	5856	5744	5488	5201	4806	3998	2626	1663				
24HES624D11		3/4	0.73	26.0	6385	6153	6080	5998	5797	5541	5293	4887	3897	3078	2238	1331		
24HES426D11		3/4	0.60	21.0	6648	6286	6182	6070	5821	5532	5160	4203	2821	1910				
24HES626D11		1	0.83	27.0	6908	6699	6633	6560	6380	6127	5828	5336	4362	3304	2468	1517		
24HES412D17	1725	1	0.77	35.0	5980	5786	5729	5669	5535	5383	5217	4981	4521	3765	2994	2525	2113	
24HES612D17		1-1/2	1.17	37.0	6127	6011	5977	5943	5864	5774	5666	5462	5099	4754	3961	3583	3217	
24HES414D17		1-1/2	1.04	35.0	6783	6568	6509	6447	6316	6173	6020	5777	5388	4530	4089	3344	2708	
24HES614D17		1-1/2	1.39	40.0	6573	6422	6382	6341	6254	6161	6062	5900	5597	5271	4394	3888	3550	
24HES416D17		1-1/2	1.17	35.0	7314	7121	7066	7008	6880	6735	6574	6311	5931	5334	4585	3821	3154	
24HES616D17		2	1.52	44.0	7335	7188	7148	7106	7018	6922	6818	6644	6314	5994	5516	4638	4187	
24HES418D17		1-1/2	1.33	36.0	7916	7748	7699	7647	7532	7395	7231	6933	6490	5990	5124	4720	3558	
24HES618D17		2	1.70	46.0	7848	7729	7697	7662	7588	7507	7415	7254	6901	6522	6176	5253	4715	
24HES420D17		2	1.57	36.0	8549	8355	8301	8244	8121	7982	7828	7564	7104	6692	5577	5259	4354	
24HES620D17		2	2.00	48.0	8665	8492	8445	8397	8297	8190	8076	7892	7554	7206	6867	6325	5342	
24HES422D17		2	1.75	36.0	9001	8770	8709	8646	8513	8373	8224	7989	7576	7148	5974	5570	4672	
24HES622D17		3	2.31	50.0	9116	8988	8954	8918	8842	8759	8667	8508	8166	7715	7301	6760	6013	
24HES424D17		2	1.99	37.0	9525	9321	9266	9209	9089	8961	8821	8592	8145	7652	6534	5994	5240	
24HES624D17		3	2.54	51.0	9662	9522	9485	9446	9363	9273	9172	9000	8638	8196	7820	7300	6458	
24HES426D17		3	2.16	39.0	10060	9835	9776	9714	9588	9455	9314	9086	8655	8145	6984	6303	5653	
24HES626D17		3	2.91	52.0	10453	10326	10291	10257	10181	10100	10011	9859	9530	9050	8579	7968	7137	
24HES428D17	3	2.44	42.0	10509	10303	10247	10189	10066	9933	9788	9545	9069	8562	7698	6744	6036		
24HES628D17	5	3.13	54.0	10864	10703	10660	10616	10523	10424	10317	10141	9795	9375	8946	8395	7290		
24HES430D17	3	2.57	47.0	10808	10636	10591	10541	10437	10322	10195	9973	9471	8846	7860	6953	6433		
24HES630D17	5	3.45	57.0	11454	11327	11292	11256	11179	11096	11002	10834	10443	9854	9446	9044	7905		
24HES432D17	3	2.79	52.0	11213	11044	10999	10950	10846	10730	10599	10364	9802	9167	8321	7235	6627		
24HES632D17	5	3.69	60.0	11934	11792	11753	11714	11630	11539	11441	11270	10903	10368	9814	9331	8154		
24HES434D17	3	2.94	64.0	11513	11324	11273	11218	11101	10971	10825	10562	9989	9421	8314	7434	6917		
24HES634D17	5	3.80	67.0	12172	12022	11981	11940	11849	11752	11644	11459	11049	10456	9920	9346	8063		

Performance shown is for installation type A: free inlet, free outlet. Performance ratings do not include the effects of appurtenances in the airstream. The sound ratings shown are for loudness values in the fan sones at 5 ft. (1.5 m) in a hemispherical free field calculated per AMCA Standard 301. Values shown are for installation type A: free inlet fan sone levels. *Sone values are for maximum cataloged CFM at specified RPM.

HES-D 30 Data

Prop Diameter - 30"
Prop Type - Extruded Supply
 Aluminum Airfoil
Maximum MHP = 2
Maximum Frame = 184T
Tip Speed (FPM) = 7.85 x RPM

Base Material - 14 gauge Lorenized™ steel
Hood Material - 18 gauge galvanized steel
Intake Area - 20.5 sq. ft.
Intake Velocity (FPM) - (CFM/20.5)
Roof Opening Square - 37-1/2"
Matching Curb - RCG, RCA-40
Shipping Weight - 680 lbs.

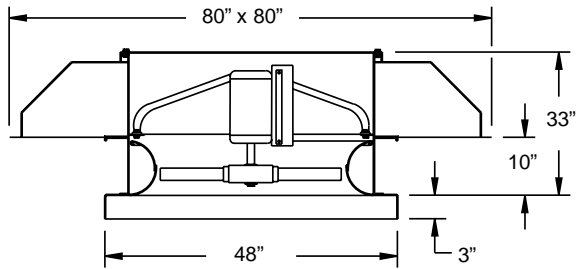


30 HES-D

Catalog Number	RPM	HP	Max. BHP	Sones*	CFM at Static Pressure													
					0.0	0.10	0.125	0.15	0.20	0.25	0.30	0.375	0.50	0.625	0.75	0.875	1.00	
30HES412D08	860	1/2	0.28	18.1	5752	5148	4938	4751	4180	3554	2761	2117						
30HES612D08		1/2	0.43	19.4	5893	5535	5391	5210	4861	4423	3726	3166	2416					
30HES414D08		1/2	0.38	18.4	6524	5910	5716	5511	5123	4231	3815	2729						
30HES614D08		3/4	0.51	21.0	6322	5908	5781	5644	5339	5000	4070	3479	2713	1635				
30HES416D08		1/2	0.42	18.5	7035	6449	6242	6022	5651	4881	4319	3159						
30HES616D08		3/4	0.60	22.0	7055	6639	6505	6356	6027	5703	5113	4099	3251	2243				
30HES418D08		1/2	0.48	18.8	7614	7085	6868	6609	6188	5524	4855	3589	2073					
30HES618D08		3/4	0.68	24.0	7549	7204	7086	6944	6577	6215	5812	4621	3701	2673				
30HES420D08		3/4	0.59	19.3	8223	7651	7450	7224	6775	6257	5276	4417	2494					
30HES620D08		1	0.78	24.0	8334	7857	7712	7555	7214	6870	6512	5356	4195	3068				
30HES422D08		3/4	0.66	19.8	8658	8026	7838	7639	7227	6744	5625	4795	2699					
30HES622D08		1	0.88	25.0	8769	8408	8289	8152	7794	7345	6924	5945	4345	3345	1865			
30HES424D08		3/4	0.72	20.0	9162	8594	8416	8218	7764	7256	6097	5289	3054					
30HES624D08		1	0.98	26.0	9293	8900	8771	8622	8246	7810	7436	6365	5067	3641	2200			
30HES426D08		1	0.79	21.0	9676	9069	8889	8695	8254	7726	6464	5646	3395					
30HES626D08		1-1/2	1.08	26.0	10054	9699	9584	9453	9105	8614	8140	7015	5477	3977	2501			
30HES428D08		1	0.88	23.0	10108	9528	9342	9133	8646	8135	7094	5994	3760	1959				
30HES628D08		1-1/2	1.16	27.0	10450	10007	9870	9720	9364	8938	8504	7185	5731	4137	2727			
30HES430D08		1	0.94	24.0	10396	9907	9741	9546	9018	8387	7249	6320	3979	2146				
30HES630D08		1-1/2	1.29	29.0	11017	10655	10532	10386	9967	9374	9005	7881	6109	4475	3045			
30HES432D08		1-1/2	1.02	26.0	10785	10298	10128	9920	9323	8705	7670	6533	4289	2317				
30HES632D08		1-1/2	1.39	30.0	11479	11081	10953	10806	10421	9856	9336	8117	6218	4704	3259			
30HES434D08		1-1/2	1.10	31.0	11074	10527	10334	10104	9514	8953	7679	6798	4328	2425				
30HES634D08		1-1/2	1.42	33.0	11708	11284	11146	10983	10552	9936	9436	7943	6597	4765	3228			
30HES412D11	1140	3/4	0.66	28.0	7625	7235	7112	6976	6671	6371	6097	5152	3942	3016	2193			
30HES612D11		1-1/2	1.02	30.0	7812	7581	7509	7430	7237	6986	6685	6338	5095	4383	3753	3220	2463	
30HES414D11		1	0.86	28.0	8648	8228	8105	7976	7694	7390	7095	6606	5260	3937	2798	1761		
30HES614D11		1-1/2	1.28	32.0	8380	8089	8008	7923	7741	7539	7318	6966	5727	4781	4190	3614	2890	
30HES416D11		1	0.98	29.0	9326	8942	8824	8695	8401	8072	7765	7360	5892	4517	3366	2154		
30HES616D11		1-1/2	1.44	35.0	9353	9066	8984	8896	8705	8489	8248	7878	7118	5640	4986	4330	3605	
30HES418D11		1-1/2	1.14	29.0	10093	9756	9650	9531	9240	8870	8487	8069	6571	5248	3869	2792		
30HES618D11		2	1.59	37.0	10007	9773	9706	9632	9466	9266	9020	8573	7928	6377	5603	4926	4201	
30HES420D11		1-1/2	1.31	29.0	10900	10518	10404	10280	9999	9671	9313	8839	7169	6517	4505	3341	2015	
30HES620D11		2	1.83	38.0	11048	10712	10619	10520	10310	10081	9833	9436	8796	7643	6270	5583	4754	
30HES422D11		1-1/2	1.50	29.0	11477	11031	10907	10778	10504	10210	9899	9436	7703	6884	4815	3611	2376	
30HES622D11		2	2.00	39.0	11624	11375	11304	11228	11061	10864	10628	10175	9359	8274	6824	5781	5068	
30HES424D11		2	1.65	30.0	12145	11748	11637	11519	11264	10977	10656	10125	8461	7413	5424	4081	2894	
30HES624D11		2	1.81	32.0	12827	12393	12275	12153	11892	11608	11297	10767	9087	7814	5801	4531	3347	

Performance shown is for installation type A: free inlet, free outlet. Performance ratings do not include the effects of appurtenances in the airstream. The sound ratings shown are for loudness values in the fan sones at 5 ft. (1.5 m) in a hemispherical free field calculated per AMCA Standard 301. Values shown are for installation type A: free inlet fan sone levels. *Sone values are for maximum catalog CFM at specified RPM.

Data 36 HES-D



Prop Diameter - 36"
Prop Type - Extruded Supply Aluminum Airfoil
Maximum MHP = 5
Maximum Frame = 215T
Tip Speed (FPM) = 9.43 x RPM

Base Material - 14 gauge Lorenized™ steel
Hood Material - 18 gauge galvanized steel
Intake Area - 28 sq. ft.
Intake Velocity (FPM) - (CFM/28)
Roof Opening Square - 43-1/2"
Matching Curb - RCG, RCA-46
Shipping Weight - 965 lbs.

36 HES-D

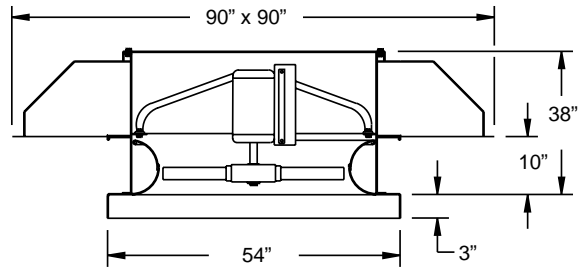
Catalog Number	RPM	HP	Max. BHP	Sones*	CFM at Static Pressure														
					0.0	0.10	0.125	0.15	0.20	0.25	0.30	0.375	0.50	0.625	0.75	0.875	1.00		
36HES412D06	680	3/4	0.34	17.3	7795	6844	6539	6266	5085	4269	3313								
36HES612D06		3/4	0.53	18.7	7987	7416	7169	6869	6396	5266	4692	3896	2639						
36HES414D06		1/2	0.47	17.8	8841	7888	7584	7285	6471	5433	4395	2986							
36HES614D06		3/4	0.66	20.0	8567	7928	7728	7507	7033	6048	5088	4348	3082						
36HES416D06		3/4	0.53	18.1	9534	8612	8284	7969	7400	6080	5033	3569							
36HES616D06		3/4	0.74	22.0	9561	8915	8700	8460	7968	7372	6080	5164	3801						
36HES418D06		3/4	0.60	18.2	10318	9472	9106	8714	8142	6772	6190	4065							
36HES618D06		1	0.80	23.0	10230	9691	9494	9252	8658	8160	6900	5804	4412						
36HES420D06		3/4	0.67	18.9	11143	10246	9920	9563	8927	7415	6873	4785							
36HES620D06		1	0.90	23.0	11294	10557	10329	10081	9551	9043	8283	6488	4994	3110					
36HES422D06		1	0.77	19.6	11733	10760	10466	10156	9534	8011	7282	5115	2651						
36HES622D06		1-1/2	1.03	24.0	11883	11321	11127	10895	10276	9630	8846	7152	5289	3425					
36HES424D06		1	0.86	19.7	12416	11536	11251	10933	10219	8849	7836	5776	3152						
36HES624D06		1-1/2	1.13	25.0	12594	11983	11771	11522	10893	10293	9556	7965	5955	3862					
36HES426D06		1	0.94	21.0	13113	12178	11895	11586	10871	9562	8239	6173	3630						
36HES626D06		1-1/2	1.30	25.0	13625	13074	12886	12665	12045	11311	10430	8865	6399	4321					
36HES428D06		1-1/2	1.08	22.0	13698	12797	12498	12158	11401	10377	8821	6912	4048						
36HES628D06		1-1/2	1.41	26.0	14161	13477	13258	13014	12428	11777	10993	9064	6664	4573					
36HES430D06	1-1/2	1.21	24.0	14088	13324	13052	12718	11820	10638	9087	7395	4378							
36HES432D06	1-1/2	1.28	26.0	14616	13852	13567	13201	12227	11195	9458	7710	4584							
36HES434D06	1-1/2	1.36	30.0	15007	14149	13830	13436	12546	11300	9713	7717	4657							
36HES412D08	860	3/4	0.70	25.0	9859	9210	8995	8756	8270	7833	6781	5935	3991	2657					
36HES612D08		1-1/2	1.07	27.0	10101	9718	9592	9444	9066	8591	8235	7092	5751	4763	3839	2609			
36HES414D08		1	0.91	26.0	11181	10495	10289	10068	9591	9123	8634	7089	5236	3432					
36HES614D08		1-1/2	1.35	29.0	10835	10364	10229	10086	9773	9420	9049	8336	6260	5319	4378	3041			
36HES416D08		1-1/2	1.05	26.0	12058	11423	11218	10989	10476	9994	9566	7979	5995	4156	2214				
36HES616D08		2	1.54	31.0	12092	11625	11487	11337	11003	10620	10228	9626	7406	6344	5268	4060			
36HES418D08		1-1/2	1.22	26.0	13049	12491	12301	12078	11515	10925	10484	8976	7214	4839	2901				
36HES618D08		2	1.68	33.0	12938	12557	12440	12312	12006	11615	11139	10521	8367	7130	6039	4805			
36HES420D08		1-1/2	1.36	27.0	14093	13465	13270	13051	12545	11979	11482	9997	8530	5595	3639				
36HES620D08		2	1.89	34.0	14284	13740	13585	13420	13062	12668	12248	11640	10090	7993	6846	5485			
36HES422D08		2	1.57	27.0	14838	14117	13912	13697	13236	12743	12256	11054	9010	5985	4133				
36HES622D08		3	2.13	35.0	15029	14624	14503	14373	14072	13697	13217	12425	10861	8562	7133	5965	4326		
36HES424D08		2	1.74	28.0	15702	15059	14872	14673	14229	13717	13155	12107	10693	6690	4740	2607			
36HES624D08		3	2.37	36.0	15927	15487	15356	15214	14887	14485	13992	13237	11694	9795	8227	6489	4879		
36HES426D08		2	1.90	29.0	16584	15885	15690	15486	15043	14548	13987	12965	10207	7168	5358	3204			
36HES626D08		3	2.63	37.0	17231	16831	16716	16587	16296	15935	15463	14581	12779	10953	8836	7069	5460		
36HES428D08		3	2.12	31.0	17324	16672	16480	16273	15805	15261	14653	13698	10880	8118	5941	3687			
36HES628D08		3	2.84	38.0	17910	17406	17261	17107	16767	16374	15918	15147	13383	11245	9232	7339	5779		
36HES430D08	3	2.34	33.0	17817	17273	17109	16930	16506	15961	15243	14093	11274	8664	6312	4016				
36HES432D08	3	2.53	37.0	18485	17947	17781	17598	17157	16557	15743	14661	11708	9199	6723	4311				
36HES434D08	3	2.67	44.0	18979	18375	18190	17983	17490	16852	16128	15064	12078	9191	6792	4492				
36HES412D11	1140	2	1.62	39.0	13069	12628	12499	12361	12056	11707	11329	10811	9571	8103	6317	5318	4387		
36HES612D11		3	2.49	42.0	13389	13126	13050	12971	12791	12584	12332	11854	11061	10120	8498	7647	6842		
36HES414D11		3	2.15	39.0	14821	14337	14203	14062	13763	13438	13090	12538	11663	9651	8724	6983	5581		
36HES614D11		5	3.02	45.0	14363	14023	13933	13838	13641	13429	13203	12834	12147	11390	9294	8320	7585		
36HES416D11		3	2.45	40.0	15984	15546	15421	15288	14996	14664	14294	13700	12860	11183	9850	7992	6561		
36HES616D11		5	3.31	49.0	16029	15697	15605	15511	15310	15092	14852	14455	13710	12982	11703	9853	8966		
36HES418D11		3	2.85	41.0	17298	16917	16808	16688	16424	16109	15727	15039	14080	12657	11060	9731	7669		
36HES618D11		5	3.64	53.0	17150	16880	16808	16728	16560	16374	16164	15790	14967	14143	13260	11127	10087		
36HES420D11		5	3.25	41.0	18681	18243	18121	17991	17709	17393	17037	16432	15415	14306	12016	11337	8933		
36HES620D11		5	4.25	54.0	18935	18544	18437	18329	18101	17858	17599	17179	16410	15632	14834	13433	11291		
36HES422D11		5	3.65	41.0	19669	19149	19009	18866	18564	18246	17910	17374	16444	15386	12821	11975	9571		
36HES622D11		5	4.89	56.0	19922	19632	19555	19473	19300	19110	18898	18533	17733	16716	15772	14442	12731		
36HES424D11		5	4.13	42.0	20814	20353	20228	20099	19827	19534	19216	18689	17666	16528	13912	12880	10806		
36HES426D11		5	4.60	45.0	21984	21475	21341	21202	20916	20613	20292	19773	18780	17599	14769	13560	11543		

Performance shown is for installation type A: free inlet, free outlet. Performance ratings do not include the effects of apertures in the airstream. The sound ratings shown are for loudness values in the fan sones at 5 ft. (1.5 m) in a hemispherical free field calculated per AMCA Standard 301. Values shown are for installation type A: free inlet fan sone levels. *Sone values are for maximum cataloged CFM at specified RPM.

HES-D 42 Data

Prop Diameter - 42"
Prop Type - Extruded Supply
 Aluminum Airfoil
Maximum MHP = 10
Maximum Frame = 256T
Tip Speed (FPM) = 11.00 x RPM

Base Material - 14 gauge Lorenized™ steel
Hood Material - 18 gauge galvanized steel
Intake Area - 35.5 sq. ft.
Intake Velocity (FPM) - (CFM/35.5)
Roof Opening Square - 49-1/2"
Matching Curb - RCG, RCA-52
Shipping Weight - 1320 lbs.

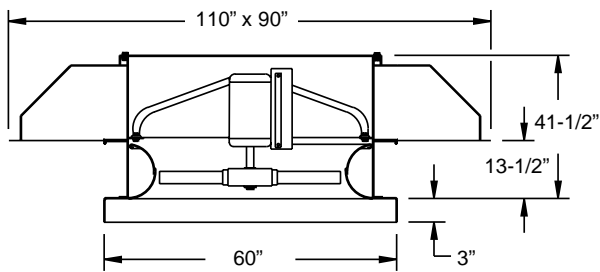


42 HES-D

Catalog Number	RPM	HP	Max. BHP	Sones*	CFM at Static Pressure														
					0.0	0.10	0.125	0.15	0.20	0.25	0.30	0.375	0.50	0.625	0.75	0.875	1.00		
42HES414D06	680	1	0.84	23.0	14655	13528	13149	12740	11981	11310									
42HES614D06		1-1/2	1.28	27.0	15049	14624	14478	14301	13711	12853	12137	10621	9420	8149					
42HES416D06		1	0.97	24.0	15601	14574	14265	13931	13192	12360									
42HES616D06		1-1/2	1.43	28.0	16320	15547	15316	15066	14518	13934	13383	12182	9902	8407					
42HES418D06		1-1/2	1.19	24.0	16627	15900	15633	15295	14380	13603	12532	10697							
42HES618D06		2	1.67	30.0	17952	17339	17134	16896	16252	15413	14813	13839	11223	9820					
42HES420D06		1-1/2	1.35	25.0	17883	16768	16461	16137	15422	14558	13384	11433							
42HES620D06		2	1.93	31.0	19228	18642	18454	18238	17686	16870	16061	15013	12095	10625	8128				
42HES422D06		2	1.59	26.0	19143	18190	17880	17529	16666	15685	14178	12316	11298						
42HES622D06		3	2.19	32.0	20652	19993	19789	19560	19004	18235	17291	15983	13441	11422	9559				
42HES424D06		2	1.65	26.0	19816	18876	18536	18120	17006	16033	14413	12700	10781						
42HES624D06		3	2.39	32.0	21293	20610	20388	20130	19449	18422	17437	16441	14370	12109	9052				
42HES426D06		2	1.84	27.0	20568	19824	19554	19202	18132	17291	15964	13721	10842						
42HES626D06		3	2.58	33.0	22306	21506	21271	21017	20435	19727	18857	17343	15108	12066	9849				
42HES428D06		3	2.08	29.0	21598	20730	20435	20092	19151	17992	16618	14087	12850						
42HES628D06		3	2.90	34.0	23596	22889	22666	22415	21777	20810	19458	18060	15718	12985	11234				
42HES430D06	3	2.29	31.0	22641	21681	21375	21027	20123	18635	17066	15357	12273							
42HES432D06	3	2.66	34.0	23223	22306	21980	21586	20347	18826	16908	15538	13618							
42HES414D08	860	2	1.67	33.0	18534	17728	17484	17220	16629	15980	15359	14578							
42HES614D08		3	2.60	38.0	19033	18724	18636	18535	18310	18016	17588	16522	15095	12888	12121	11516	10301		
42HES416D08		2	1.94	34.0	19731	18964	18750	18525	18040	17506	16922	15981							
42HES616D08		3	2.97	41.0	20639	20061	19900	19731	19369	18972	18541	17849	16741	14954	13086	11772	10630		
42HES418D08		3	2.41	34.0	21029	20513	20357	20186	19771	19215	18477	17518	15427	13315	11498				
42HES618D08		5	3.37	44.0	22704	22260	22127	21989	21669	21281	20787	19823	18555	17148	14561	13653	12416		
42HES420D08		3	2.79	35.0	22616	21759	21533	21301	20818	20301	19743	18778	16490	14271	13408				
42HES620D08		5	3.91	45.0	24317	23884	23760	23629	23338	22988	22656	21695	20092	18699	16129	14655	13435		
42HES422D08		5	3.21	36.0	24210	23512	23309	23094	22613	22049	21376	20231	17341	15412	14709				
42HES622D08		5	4.40	47.0	26118	25629	25490	25347	25027	24659	24227	23398	21596	19850	17896	15832	14443		
42HES424D08		5	3.42	37.0	25062	24391	24189	23967	23442	22766	21889	20624	17571	15857	14821				
42HES624D08		5	4.83	48.0	26929	26429	26283	26133	25784	25369	24847	23742	21779	20571	19177	16978	15310		
42HES426D08		5	3.76	39.0	26012	25488	25324	25148	24729	24155	23322	22195	19423	16923	14625				
42HES626D08		7-1/2	5.22	49.0	28210	27608	27442	27270	26901	26496	26041	25247	23545	21542	19703	17822	15256		
42HES428D08		5	4.20	42.0	27315	26683	26501	26299	25844	25284	24567	23152	20130	17612	16752				
42HES628D08		7-1/2	5.92	51.0	29842	29316	29167	29010	28665	28257	27772	26766	24299	22476	20615	18580	16419		
42HES430D08		5	4.67	45.0	28634	27925	27724	27511	27032	26469	25780	24275	21167	18990	16498				
42HES630D08		7-1/2	6.46	54.0	31185	30573	30403	30232	29861	29455	29066	28200	25998	23345	21847	19336	17286		
42HES432D08		7-1/2	5.35	49.0	29370	28709	28515	28298	27798	27148	26221	24438	20979	19373	18005				
42HES632D08		7-1/2	6.96	58.0	31682	31259	31140	31017	30738	30406	29986	29008	25921	23946	22276	19322	17613		
42HES414D11		1140	5	3.97	53.0	24568	23999	23843	23677	23326	22937	22514	21817	20595	19596	18431			
42HES614D11			7-1/2	5.46	61.0	25230	25009	24950	24886	24757	24611	24457	24178	23522	22172	21156	20045	18728	
42HES416D11			5	4.61	55.0	26155	25598	25449	25297	24982	24649	24298	23731	22676	21523	20123			
42HES616D11			7-1/2	6.32	67.0	27359	26938	26828	26713	26476	26226	25962	25538	24785	23900	23051	22216	21087	
42HES418D11	7-1/2		5.60	56.0	27875	27510	27409	27308	27081	26828	26544	26029	24818	23534	22300	20507	18367		
42HES618D11	10		7.56	72.0	30096	29778	29689	29599	29411	29209	28981	28601	27776	26628	25454	24621	23705		
42HES420D11	7-1/2		6.31	55.0	29980	29344	29180	29015	28678	28331	27974	27416	26408	25244	23837	21917	19583		
42HES620D11	10		8.58	74.0	32234	31923	31838	31750	31574	31376	31167	30817	30097	29098	27741	26663	25624		
42HES422D11	7-1/2		7.27	56.0	32093	31589	31456	31314	31020	30703	30360	29787	28628	27204	25677	23057	20987		
42HES624D11	10		7.80	57.0	33222	32745	32616	32480	32190	31867	31503	30860	29399	27692	26351	23370	21702		
42HES426D11	10		8.76	61.0	34481	34109	34003	33896	33666	33415	33126	32597	31297	29748	28489	25851	23698		
42HES428D11	10		9.50	66.0	36209	35755	35632	35509	35237	34945	34624	34078	32887	31182	29561	26799	24042		

Performance shown is for installation type A: free inlet, free outlet. Performance ratings do not include the effects of appurtenances in the airstream. The sound ratings shown are for loudness values in the fan sones at 5 ft. (1.5 m) in a hemispherical free field calculated per AMCA Standard 301. Values shown are for installation type A: free inlet fan sone levels. *Sone values are for maximum cataloged CFM at specified RPM.

Data 48 HES-D



Prop Diameter - 48"
Prop Type - Extruded Supply Aluminum Airfoil
Maximum MHP = 10
Maximum Frame = 256T
Tip Speed (FPM) = 12.57 x RPM

Base Material - 14 gauge Lorenized™ steel
Hood Material - 18 gauge galvanized steel
Intake Area - 43.2 sq. ft.
Intake Velocity (FPM) - (CFM/43.2)
Roof Opening Square - 55-1/2"
Matching Curb - RCG, RCA-58
Shipping Weight - 1410 lbs.

48 HES-D

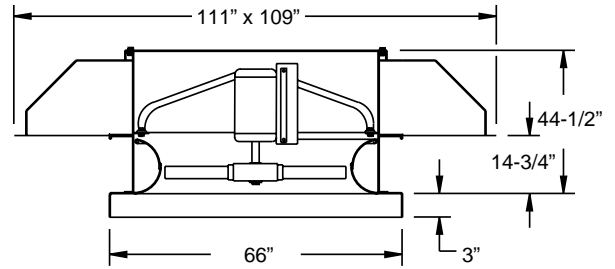
Catalog Number	RPM	HP	Max. BHP	Sones*	CFM at Static Pressure												
					0.0	0.10	0.125	0.15	0.20	0.25	0.30	0.375	0.50	0.625	0.75	0.875	1.00
48HES414D06	680	2	1.60	30.0	21803	20595	20213	19793	18869	17985	17236						
48HES614D06		3	2.51	34.0	22390	21933	21788	21629	21231	20604	19521	18329	15357	14180	13182	10370	
48HES416D06		2	1.90	30.0	23211	22079	21754	21409	20654	19811	18907	17086					
48HES616D06		3	2.83	36.0	24280	23427	23183	22925	22362	21739	21072	20116	17834	15159	13356	11564	
48HES418D06		3	2.31	30.0	24737	23966	23715	23424	22672	21606	20707	19099	15772				
48HES420D06		3	2.67	31.0	26605	25354	25020	24673	23939	23131	22201	20400	16888	15542			
48HES414D08	860	5	3.26	43.0	27574	26687	26432	26160	25562	24891	24162	23059	21550				
48HES614D08		5	4.86	50.0	28317	27975	27877	27780	27555	27299	26992	26358	24443	22842	20882	18586	17932
48HES416D08		5	3.77	44.0	29355	28497	28263	28022	27512	26963	26370	25393	23599				
48HES616D08		7-1/2	5.51	54.0	30707	30060	29884	29703	29319	28908	28466	27745	26433	25185	23519	21090	19168
48HES418D08		5	4.66	44.0	31285	30719	30555	30383	29992	29523	28945	27779	25903	23587	20500	19178	
48HES618D08		7-1/2	6.39	57.0	33778	33282	33147	32999	32684	32323	31905	31126	29317	27875	26492	24364	21460
48HES420D08		7-1/2	5.40	46.0	33648	32678	32426	32169	31642	31091	30514	29584	27750	25191	21860	20826	19651
48HES422D08		7-1/2	6.23	47.0	36019	35242	35026	34799	34312	33768	33154	32066	29901	26689	23459	22553	21692
48HES424D08		7-1/2	6.62	48.0	37286	36550	36335	36112	35608	35020	34305	32909	30506	27135	24247	23108	21685
48HES426D08		7-1/2	7.32	50.0	38700	38116	37955	37773	37375	36901	36310	35039	32854	30053	26439	23905	21291
48HES414D11	1140	10	7.57	70.0	36551	25914	35742	35564	35191	34791	34362	33657	32333	30928	29729	28600	27077
48HES614D11		10	9.98	81.0	37536	37284	37221	37158	37011	36864	36705	36445	35915	35195	33960	32434	31257
48HES416D11		10	8.95	72.0	38913	38282	38119	37950	37605	37245	36871	36280	35204	34007	32722	31325	29573

Performance shown is for installation type A: free inlet, free outlet. Performance ratings do not include the effects of appurtenances in the airstream. The sound ratings shown are for loudness values in the fan sones at 5 ft. (1.5 m) in a hemispherical free field calculated per AMCA Standard 301. Values shown are for installation type A: free inlet fan sone levels. *Sone values are for maximum cataloged CFM at specified RPM.

HES-D 54 Data

Prop Diameter - 54"
Prop Type - Extruded Supply
 Aluminum Airfoil
Maximum MHP = 10
Maximum Frame = 286T
Tip Speed (FPM) = 14.16 x RPM

Base Material - 14 gauge Lorenized™ steel
Hood Material - 18 gauge galvanized steel
Intake Area - 54.3 sq. ft.
Intake Velocity (FPM) - (CFM/54.3)
Roof Opening Square - 61-1/2"
Matching Curb - RCG, RCA-64
Shipping Weight - 1585 lbs.

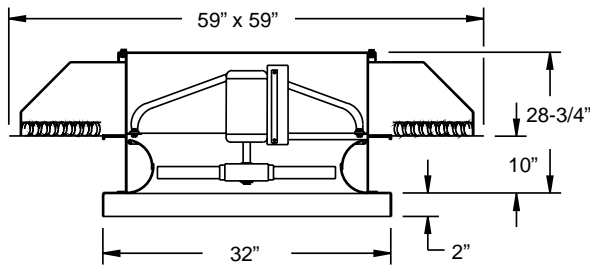


54 HES-D

Catalog Number	RPM	HP	Max. BHP	Sones*	CFM at Static Pressure												
					0.0	0.10	0.125	0.15	0.20	0.25	0.30	0.375	0.50	0.625	0.75	0.875	1.00
54HES414D06	680	3	2.87	37.0	30963	29662	29269	28847	27900	26854	25821	24546					
54HES614D06		5	4.51	42.0	31797	31297	31158	30994	30634	30183	29538	27792	25525	22029	20396	19484	17909
54HES416D06		5	3.31	38.0	32963	31720	31375	31014	30235	29380	28440	26938					
54HES418D06		5	4.15	38.0	35131	34298	34050	33773	33115	32254	31096	29487	26276	22488	20158		
54HES420D06		5	4.81	39.0	37783	36393	36027	35652	34872	34043	33149	31619	28066	24065	22731		
54HES414D08	860	7-1/2	5.97	55.0	39159	38185	37915	37631	37016	36341	35599	34381	32371	30697	28223		
54HES614D08		10	8.17	63.0	40214	39839	39734	39625	39405	39147	38866	38363	37078	34805	33036	30988	27847
54HES416D08		7-1/2	6.89	55.0	41689	40736	40484	40222	39679	39104	38492	37505	35661	33633	30894		
54HES616D08		10	9.46	69.0	43608	42890	42701	42503	42094	41662	41204	40467	39104	37620	36219	34690	32273
54HES418D08		10	8.39	56.0	44430	43805	43634	43453	43063	42620	42107	41165	38914	36895	34490	30710	28437
54HES420D08	10	9.55	58.0	47785	46702	46423	46140	45563	44969	44354	43388	41625	39535	36847	33309	30433	

Performance shown is for installation type A: free inlet, free outlet. Performance ratings do not include the effects of appurtenances in the airstream. The sound ratings shown are for loudness values in the fan sones at 5 ft. (1.5 m) in a hemispherical free field calculated per AMCA Standard 301. Values shown are for installation type A: free inlet fan sone levels. *Sone values are for maximum cataloged CFM at specified RPM.

Data 20 HEF-D



Prop Diameter - 20"
Prop Type - Extruded Filtered Aluminum Airfoil
Maximum MHP = 2
Maximum Frame = 145T
Tip Speed (FPM) = 5.24 x RPM

Base Material - 14 gauge Lorenized™ steel
Hood Material - 18 gauge galvanized steel
Intake Area - 16.3 sq. ft.
Intake Velocity (FPM) - (CFM/16.3)
Roof Opening Square - 27-1/2"
Matching Curb - RCG, RCA-30
Shipping Weight - 520 lbs.

20 HEF-D

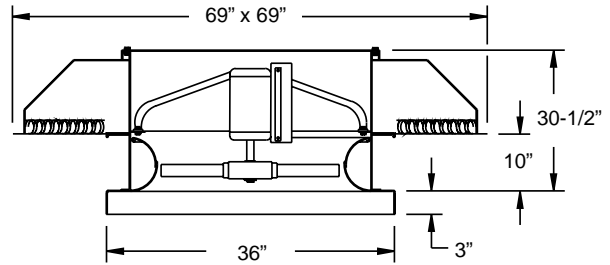
Catalog Number	RPM	HP	Max. BHP	Sones*	CFM at Static Pressure													
					0.0	0.10	0.125	0.15	0.20	0.25	0.30	0.375	0.50	0.625	0.75	0.875	1.00	
20HEF412D11	1140	1/6	0.09	13.3	2273	1900	1810	1697										
20HEF612D11		1/6	0.15	14.2	2317	2038	1972	1901	1712	1441	1276	1091						
20HEF414D11		1/6	0.12	13.5	2556	2181	2106	2007	1728	1340	1138							
20HEF614D11		1/4	0.17	15.3	2481	2192	2142	2088	1909	1579	1371	1166						
20HEF420D11		1/6	0.13	13.8	2763	2380	2299	2208	1959	1663	1349							
20HEF616D11		1/4	0.19	16.7	2758	2465	2410	2353	2185	1947	1573	1346						
20HEF418D11		1/6	0.15	14.2	2986	2605	2514	2417	2179	1910	1544							
20HEF618D11		1/4	0.21	17.8	2957	2677	2612	2544	2389	2170	1826	1505						
20HEF424D11		1/4	0.19	14.0	3219	2826	2742	2651	2407	2109	1656	1229						
20HEF620D11		1/4	0.24	18.2	3255	2918	2856	2792	2646	2444	2181	1681	1333					
20HEF422D11		1/4	0.20	14.2	3382	2980	2906	2825	2576	2245	1770	1320						
20HEF622D11		1/3	0.28	18.9	3432	3134	3065	2994	2829	2602	2400	1072	1421					
20HEF424D11		1/4	0.23	14.5	3598	3188	3113	3033	2771	2429	1982	1468						
20HEF624D11		1/3	0.30	19.1	3641	3317	3245	3172	3010	2796	2570	2018	1549					
20HEF426D11		1/4	0.25	15.3	3785	3363	3289	3211	2959	2563	2120	1609						
20HEF626D11		1/2	0.34	19.6	3929	3625	3556	3485	3322	3055	2826	2229	1689					
20HEF428D11		1/3	0.28	16.4	3958	3537	3454	3367	3111	2770	2302	1755						
20HEF628D11		1/2	0.37	20.0	4087	3730	3662	3595	3447	3211	2908	2337	1756					
20HEF430D11		1/3	0.30	18.1	4071	3683	3593	3497	3213	2842	2514	1848						
20HEF630D11		1/2	0.40	22.0	4305	3998	3909	3814	3614	3411	3130	2626	1893					
20HEF432D11		1/3	0.32	20.0	4218	3830	3730	3623	3337	2975	2576	1960						
20HEF632D11		1/2	0.43	23.0	4498	4164	4074	3981	3779	3534	3223	2548	1988					
20HEF434D11		1/2	0.34	25.0	4329	3908	3813	3713	3425	3035	2699	1997						
20HEF634D11		1/2	0.45	25.0	4579	4231	4137	4038	3822	3563	3225	2752	2020					
20HEF412D17	1725	1/3	0.31	25.0	3439	3131	3080	3030	2933	2829	2702	2451						
20HEF612D17		3/4	0.53	26.0	3506	3307	3262	3219	3133	3048	2960	2810	2436	2055	1819	1624	1332	
20HEF414D17		1/2	0.41	25.0	3868	3548	3497	3449	3355	3261	3154	2937	2470	1872	1506			
20HEF614D17		3/4	0.57	28.0	3755	3497	3459	3424	3356	3289	3222	3101	2731	2216	1950	1738	1501	
20HEF416D17		1/2	0.47	25.0	4180	3879	3822	3767	3661	3557	3447	3256	2790	2322	1755	1216		
20HEF616D17		3/4	0.67	31.0	4174	3929	3887	3848	3773	3700	3627	3502	3186	2693	2200	2018	1865	
20HEF418D17		3/4	0.53	26.0	4518	4252	4191	4130	4011	3892	3769	3571	3132	2688	1981	1549		
20HEF618D17		3/4	0.73	33.0	4474	4277	4232	4187	4101	4015	3928	3791	3510	3069	2487	2257	2102	
20HEF420D17		3/4	0.61	26.0	4871	4570	4510	4452	4340	4230	4117	3924	3454	3033	2267	1791		
20HEF620D17		1	0.84	34.0	4926	4646	4597	4551	4464	4381	4298	4171	3895	3547	2852	2517	2326	
20HEF422D17		3/4	0.70	26.0	5118	4769	4714	4663	4565	4468	4370	4191	3696	3216	2425	1926		
20HEF622D17		1	0.96	35.0	5193	4982	4934	4887	4796	4705	4613	4469	4154	3804	3249	2793	2517	
20HEF424D17		1	0.78	26.0	5445	5093	5037	4983	4881	4782	4682	4506	3999	3466	2656	2153	1579	
20HEF624D17		1-1/2	1.04	36.0	5509	5275	5223	5173	5075	4979	4883	4736	4443	4080	3672	3003	2703	
20HEF426D17		1	0.83	28.0	5727	5355	5299	5246	5145	5048	4949	4786	4260	3664	2823	2373	1832	
20HEF626D17		1-1/2	1.19	36.0	5945	5729	5680	5632	5539	5447	5355	5211	4892	4459	4077	3305	2949	
20HEF428D17		1	0.96	30.0	5989	5648	5586	5528	5416	5306	5195	5013	4525	3931	3065	2592	2050	
20HEF628D17		1-1/2	1.28	38.0	6185	5895	5842	5792	5696	5606	5517	5382	5105	4651	4161	3448	3052	
20HEF430D17		1-1/2	1.06	33.0	6160	5881	5820	5759	5641	5523	5402	5204	4644	4080	3239	2731	2198	
20HEF630D17		1-1/2	1.41	40.0	6514	6325	6275	6223	6115	6001	5881	5690	5360	4992	4477	3697	3259	
20HEF432D17		1-1/2	1.13	37.0	6382	6122	6059	5996	5870	5740	5606	5386	4846	4246	3353	2911	2314	
20HEF632D17		2	1.51	42.0	6805	6590	6535	6480	6367	6251	6132	5944	5592	5146	4588	3757	3374	
20HEF434D17		1-1/2	1.21	44.0	6550	6239	6173	6109	5985	5861	5734	5522	4973	4363	3401	2967	2349	
20HEF634D17		2	1.56	46.0	6929	6706	6649	6591	6473	6351	6224	6024	5648	5172	4609	3928	3466	

Performance shown is for installation type A: free inlet, free outlet. Performance ratings do not include the effects of appurtenances in the airstream. The sound ratings shown are for loudness values in the fan sones at 5 ft. (1.5 m) in a hemispherical free field calculated per AMCA Standard 301. Values shown are for installation type A: free inlet fan sone levels. *Sone values are for maximum cataloged CFM at specified RPM.

HEF-D 24 Data

Prop Diameter - 24"
Prop Type - Extruded Filtered Aluminum Airfoil
Maximum MHP = 5
Maximum Frame = 184T
Tip Speed (FPM) = 6.28 x RPM

Base Material - 14 gauge Lorenized™ steel
Hood Material - 18 gauge galvanized steel
Intake Area - 23.5 sq. ft.
Intake Velocity (FPM) - (CFM/23.5)
Roof Opening Square - 31-1/2"
Matching Curb - RCG, RCA-34
Shipping Weight - 645 lbs.

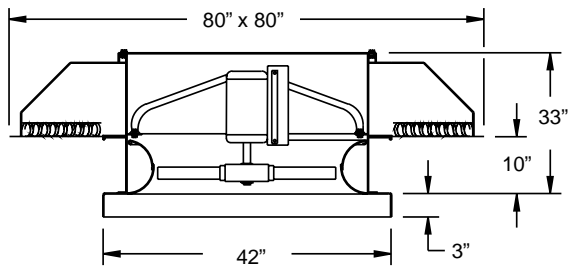


24 HEF-D

Catalog Number	RPM	HP	Max. BHP	Sones*	CFM at Static Pressure													
					0.0	0.10	0.125	0.15	0.20	0.25	0.30	0.375	0.50	0.625	0.75	0.875	1.00	
24HEF412D08	860	1/4	0.09	11.9	2926	2341	2159	1935										
24HEF612D08		1/4	0.16	12.8	3984	2547	2433	2297	1877	1616	1423							
24HEF414D08		1/4	0.13	12.2	3291	2720	2563	2346	1775	1423								
24HEF614D08		1/4	0.18	13.9	3195	2763	2676	2547	2068	1735	1520							
24HEF416D08		1/4	0.14	12.2	3558	2969	2824	2642	2169	1665	1164							
24HEF616D08		1/4	0.20	15.0	3552	3110	3018	2892	2536	1974	1747	1493						
24HEF418D08		1/4	0.16	12.3	3845	3246	3093	2918	2486	1889	1412							
24HEF618D08		1/4	0.23	15.9	3807	3370	3263	3145	2822	2269	1954	1713						
24HEF420D08		1/4	0.19	12.8	4146	3540	3394	3214	2738	2072	1629							
24HEF620D08		1/4	0.25	16.3	4192	3684	3583	3475	3168	2685	2185	1904						
24HEF422D08		1/4	0.21	13.2	4356	3750	3620	3437	2917	2211	1749							
24HEF622D08		1/2	0.29	16.9	4419	3955	3842	3719	3370	3038	2441	2039						
24HEF424D08		1/4	0.24	13.3	4634	4016	3889	3696	3157	2435	1938							
24HEF624D08		1/2	0.31	17.2	4688	4186	4070	3947	3624	3261	2638	2198						
24HEF426D08	1/2	0.27	14.1	4874	4243	4119	3943	3336	2584	2116								
24HEF626D08	1/2	0.36	17.6	5059	4586	4473	4352	3963	3594	2928	2394							
24HEF412D11	1140	1/4	0.22	18.6	3879	3396	3308	3216	2981	2651								
24HEF612D11		1/2	0.36	19.9	3955	3611	3534	3457	3296	3105	2830	2379	1961	1495				
24HEF414D11		1/3	0.29	18.9	4363	3868	3784	3699	3499	3208	2860	2181	1448					
24HEF614D11		1/2	0.42	21.0	4236	3846	3785	3725	3602	3436	3167	3167	2573	2096				
24HEF416D11		1/3	0.33	19.4	4716	4225	4130	4035	3833	3588	3235	2724	1751					
24HEF616D11		1/2	0.48	23.0	4708	4323	4256	4190	4056	3890	3656	3183	238	2100				
24HEF418D11		1/2	0.38	19.8	5096	4632	4524	4416	4193	3945	3618	3145	2039					
24HEF618D11		3/4	0.53	25.0	5047	4704	4625	4548	4390	4220	4015	3580	2665	2368	1712			
24HEF420D11		1/2	0.42	19.6	5495	4996	4895	4796	4590	4340	3994	3505	2351					
24HEF620D11		3/4	0.59	25.0	5557	5113	5035	4960	4810	4653	4450	4081	3013	2621	2035			
24HEF422D11		1/2	0.49	19.8	5774	5237	5149	5062	4881	4639	4277	3724	2520					
24HEF622D11		3/4	0.67	26.0	5858	5492	5409	5327	5161	4983	4753	4360	3391	2834	2198			
24HEF424D11		3/4	0.55	20.0	6143	5597	5506	5417	5234	4990	4611	4020	2770	1770				
24HEF624D11		3/4	0.73	26.0	6215	5812	5724	5637	5464	5284	5071	5681	3882	3045	2417			
24HEF426D11	3/4	0.60	21.0	6461	5894	5804	5716	5536	5314	4917	4243	2984	2055					
24HEF626D11	1	0.84	27.0	6706	6332	6248	6165	5997	5820	5591	5109	4381	3321	2656				
24HEF412D17	1725	1	0.76	35.0	5870	5458	5390	5327	5206	5090	4973	4778	4344	3798				
24HEF612D17		1-1/2	1.26	37.0	5985	5739	5683	5629	5524	5421	5320	5166	4887	4533	3993	3555	3254	
24HEF414D17		1	1.00	35.0	6602	6169	6101	6038	5919	5806	5695	5524	5151	4601	4062	3249	2877	
24HEF614D17		1-1/2	1.31	40.0	6409	6056	6005	5957	5868	5785	5705	5586	5375	5038	4467	3839	3495	
24HEF416D17		1-1/2	1.14	35.0	7136	6747	6673	6602	6468	6339	6214	6026	5673	5202	4597	4048	3374	
24HEF616D17		2	1.56	44.0	7125	6800	6745	6692	6595	6504	6415	6285	6060	5737	5309	4713	3983	
24HEF418D17		1-1/2	1.31	36.0	7712	7387	7312	7237	7092	6949	6806	6591	6213	5760	5199	4679	3836	
24HEF618D17		2	1.69	46.0	7637	7395	7339	7285	7178	7073	6970	6816	6551	6252	5871	5334	4586	
24HEF420D17		2	1.57	36.0	8315	7932	7854	7780	7638	7503	7371	7173	6818	6357	5712	5245	4184	
24HEF620D17		2	1.96	48.0	8408	8040	7974	7913	7799	7693	7591	7442	7194	6912	6530	6118	5447	
24HEF422D17		2	1.70	36.0	8736	8263	8190	8121	7994	7875	7759	7586	7270	6799	6099	5566	4463	
24HEF622D17		3	2.31	50.0	8864	8605	8546	8488	8374	8264	8155	7992	7713	7399	6954	6548	6127	
24HEF424D17		2	1.94	37.0	9295	8820	8744	8674	8542	8418	8299	8121	7810	7310	6622	6004	4922	
24HEF624D17		3	2.54	51.0	9404	9115	9050	8986	8864	8745	8630	8458	8170	7859	7463	7026	6565	
24HEF426D17	3	2.14	39.0	9776	9268	9191	9122	8990	8868	8750	8575	8270	7805	7040	6341	5243		
24HEF626D17	3	2.90	52.0	10148	9883	9822	9762	9647	9534	9424	9259	8979	8670	8198	7673	7229		
24HEF428D17	3	2.41	42.0	10223	9778	9696	9619	9475	9339	9207	9011	8668	8182	7535	6819	5721		
24HEF628D17	5	3.11	54.0	10558	10182	10111	10044	9920	9804	9692	9531	9264	8983	8583	8023	7418		
24HEF430D17	3	2.54	47.0	10516	10171	10093	10018	9872	9730	9589	9377	9002	8472	7723	7050	6338		
24HEF630D17	5	3.43	57.0	11120	10898	10839	10780	10658	10531	10399	10193	9824	9429	9035	8598	7984		
24HEF432D17	3	2.76	52.0	10895	10581	10505	10429	10278	10128	9976	9742	9324	8777	8072	7351	6414		
24HEF632D17	5	3.65	60.0	11617	11361	11296	11230	11099	10965	10829	10621	10256	9860	9408	8869	8222		
24HEF434D17	3	2.92	64.0	11181	10793	10709	10627	10472	10321	10173	9951	9558	9008	8266	7534	6732		
24HEF634D17	5	3.79	67.0	11828	11563	11496	11428	11290	11151	11008	10787	10400	9977	9496	8923	8224		

Performance shown is for installation type A: free inlet, free outlet. Performance ratings do not include the effects of appurtenances in the airstream. The sound ratings shown are for loudness values in the fan sones at 5 ft. (1.5 m) in a hemispherical free field calculated per AMCA Standard 301. Values shown are for installation type A: free inlet fan sone levels. *Sone values are for maximum cataloged CFM at specified RPM.

Data 30 HEF-D



Prop Diameter - 30"
Prop Type - Extruded Filtered Aluminum Airfoil
Maximum MHP = 2
Maximum Frame = 184T
Tip Speed (FPM) = 7.85 x RPM

Base Material - 14 gauge Lorenized™ steel
Hood Material - 18 gauge galvanized steel
Intake Area - 31.6 sq. ft.
Intake Velocity (FPM) - (CFM/31.6)
Roof Opening Square - 37-1/2"
Matching Curb - RCG, RCA-40
Shipping Weight - 730 lbs.

30 HEF-D

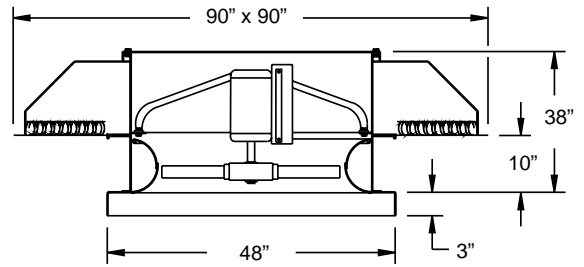
Catalog Number	RPM	HP	Max. BHP	Sones*	CFM at Static Pressure													
					0.0	0.10	0.125	0.15	0.20	0.25	0.30	0.375	0.50	0.625	0.75	0.875	1.00	
30HEF412D08	860	1/2	0.28	18.1	5646	4874	4726	4554	4097	3560								
30HES612D08		1/2	0.46	19.4	5757	5196	5069	4940	4655	4273	3720	3187	2568					
30HEF414D08		1/2	0.38	18.4	6350	5564	5425	5280	4885	4313	3689	2848						
30HEF614D08		1/2	0.50	21.0	6165	5550	5450	5351	5129	4761	4133	3425	2761					
30HEF416D08		1/2	0.42	18.5	6864	6074	5918	5760	5398	4892	4295	3394						
30HEF616D08		3/4	0.59	22.0	6853	6239	6130	6021	5787	5445	4998	3946	3249					
30HEF418D08		1/2	0.47	18.8	7417	6657	6479	6299	5916	5436	4894	3895						
30HEF618D08		3/4	0.66	24.0	7346	6785	665	6527	6260	5950	5544	4582	3637					
30HEF420D08		3/4	0.60	19.3	7998	7192	7028	6862	6497	6005	5370	4152						
30HEF620D08		3/4	0.75	24.0	8088	7380	7254	7131	6881	6584	6191	5479	4045	3355				
30HEF422D08		3/4	0.65	19.8	8403	7553	7409	7264	6934	6426	5728	4459						
30HEF622D08		1	0.86	25.0	8526	7928	7793	7657	7376	7044	6581	5989	4457	3578				
30HEF424D08		3/4	0.72	20.0	8940	8075	7926	7779	7453	6910	6214	5011	3298					
30HEF624D08		1	0.94	26.0	9045	8390	8247	8104	7814	7494	7081	6414	4782	3895	2289			
30HEF426D08		1	0.79	21.0	9403	8508	8361	8215	7906	7380	6592	5376	3680					
30HEF626D08		1-1/2	1.07	26.0	9761	9150	9013	8875	8594	8270	7760	7046	5241	4246	2645			
30HEF428D08		1	0.88	23.0	9833	8958	8794	8631	8283	7754	7095	5809	4033					
30HEF628D08		1-1/2	1.15	27.0	10155	9409	9271	9138	8871	8578	8144	7261	5447	4410	2902			
30HEF430D08		1	0.93	24.0	10114	9333	9157	8980	8599	8013	7271	6290	4258					
30HEF630D08		1-1/2	1.26	29.0	10696	10105	9939	9764	9392	8995	8600	7816	5822	4850	3263			
30HEF432D08	1-1/2	1.01	26.0	10479	9713	9523	9327	8902	8318	7607	6470	4568						
30HEF632D08	1-1/2	1.35	30.0	11174	10522	10351	10176	9808	9406	8938	8048	5962	4987	3497				
30HEF434D80	1-1/2	1.08	31.0	10754	9900	9716	9530	9129	8537	7775	6751	4637						
30HEF634D08	1-1/2	1.40	33.0	11377	10699	10519	10334	9943	9513	9017	8054	6171	5069	3464				
30HEF412D11	1140	3/4	0.66	28.0	7484	6799	6684	6573	6454	6112	5816	5225						
30HEF612D11		1-1/2	1.10	30.0	7631	7183	7084	6986	6794	6601	6401	6054	5156	4374	3870	3421	2659	
30HEF414D11		1	0.86	28.0	8418	7706	7593	7484	7274	7060	6809	6294	5244	3960	3041			
30HEF614D11		1-1/2	1.23	32.0	8172	7600	7516	7436	7283	7134	6981	6692	5777	4710	4142	3674	3077	
30HEF416D11		1	0.97	29.0	9099	8425	8298	8175	7938	7701	7450	7007	5927	4853	3601			
30HEF616D11		1-1/2	1.31	35.0	9084	8538	8445	8357	8190	8026	7860	7565	6823	5614	4678	4317	3922	
30HEF418D11		1-1/2	1.11	29.0	9832	9236	9099	8963	8694	8425	8147	7693	6684	5627	4121			
30HEF618D11		2	1.56	37.0	9737	9295	9193	9094	8899	8705	8509	8198	7536	6452	5261	4831	4472	
30HEF420D11		1-1/2	1.31	29.0	10602	9928	9793	9664	9413	9165	8909	8558	7355	6366	4740			
30HES620D11		2	1.75	38.0	10721	10096	9987	9885	9690	9503	9318	9028	8374	7567	5987	5375	4950	
30HEF422D11		1-1/2	1.48	29.0	11139	10362	10241	10126	9906	9689	9465	9038	7859	6785	5079			
30HES424D11		2	1.63	30.0	11851	11067	10941	10822	10595	10372	10144	9721	8526	7338	5559	4407	3035	
30HES426D11		2	1.79	32.0	12465	11638	11513	11395	11170	10950	10727	10341	9070	7773	5947	4910	3561	

Performance shown is for installation type A: free inlet, free outlet. Performance ratings do not include the effects of appurtenances in the airstream. The sound ratings shown are for loudness values in the fan sones at 5 ft. (1.5 m) in a hemispherical free field calculated per AMCA Standard 301. Values shown are for installation type A: free inlet fan sone levels. *Sone values are for maximum cataloged CFM at specified RPM.

36 HEF-D Data

Prop Diameter - 36"
Prop Type - Extruded Filtered Aluminum Airfoil
Maximum MHP = 5
Maximum Frame = 215T
Tip Speed (FPM) = 9.43 x RPM

Base Material - 14 gauge Lorenized™ steel
Hood Material - 18 gauge galvanized steel
Intake Area - 39.6 sq. ft.
Intake Velocity (FPM) - (CFM/39.6)
Roof Opening Square - 43-1/2"
Matching Curb - RCG, RCA-46
Shipping Weight - 1025 lbs.

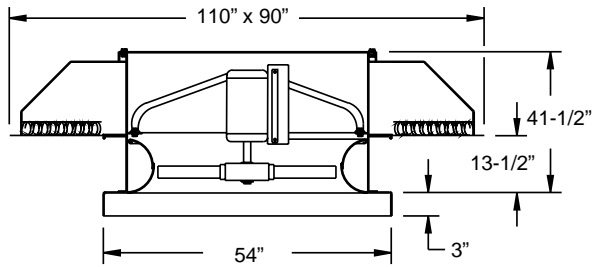


36 HEF-D

Catalog Number	RPM	HP	Max. BHP	Sones*	CFM at Static Pressure													
					0.0	0.10	0.125	0.15	0.20	0.25	0.30	0.375	0.50	0.625	0.75	0.875	1.00	
36HEF412D06	680	3/4	0.34	17.3	7651	6513	6275	5983	5185									
36HEF612D06		3/4	0.58	18.7	7801	6961	6768	6567	6096	5355	4652	4007	2856					
36HEF414D06		1/2	0.45	17.8	8606	7452	7239	6993	6282	5439	4256	3248						
36HEF614D06		3/4	0.64	20.0	8354	7457	7308	7155	6750	6004	5026	4294	3258					
36HEF416D06		3/4	0.51	18.1	9302	8133	7896	7647	7039	6143	5309	3808						
36HEF616D06		3/4	0.74	22.0	9287	8385	8221	8055	7646	7040	6186	4844	4093					
36HEF418D06		3/4	0.59	18.2	10052	8909	8639	8361	7747	6908	6133	4322						
36HEF618D06		1	0.81	23.0	9955	9113	8918	8722	8301	7765	6987	5461	4632					
36HEF420D06		3/4	0.66	18.9	10839	9642	9393	9138	8523	7612	6861	4958						
36HEF620D06		1	0.89	23.0	10960	9921	9733	9547	9156	8620	7999	6240	5126					
36HEF422D06		1	0.77	19.6	11388	10144	9926	9702	9112	8142	7284	5308						
36HEF622D06		1-1/2	1.02	24.0	11554	10658	10453	10245	9803	9190	8555	6887	5418					
36HEF424D06		1	0.85	19.7	12115	10848	10625	10397	9802	8818	7859	5810	3338					
36HEF624D06		1-1/2	1.14	25.0	12258	11279	11063	10847	10397	9840	9182	8074	5944	4167				
36HEF426D06		1	0.93	21.0	12743	11436	11216	10992	10442	9389	8298	6192	3891					
36HEF626D06		1-1/2	1.31	25.0	13227	12312	12105	11896	11455	10828	10025	8988	6480	4667				
36HEF428D06		1-1/2	1.04	22.0	13326	12035	11788	11537	10932	9996	8929	6718	4363					
36HEF628D06		1-1/2	1.40	26.0	13762	12662	12458	12257	11846	11309	10488	9178	6705	4939				
36HEF430D06		1-1/2	1.15	24.0	13707	12536	12270	11996	11347	10254	9222	7087	4723					
36HEF630D06		1-1/2	1.24	26.0	14201	13043	12751	12446	11733	10705	9620	7360	4952					
36HEF434D06	1-1/2	1.32	30.0	14574	13299	13020	12733	12035	10979	9853	7470	5030						
36HEF412D08	860	3/4	0.69	25.0	9677	8656	8480	8306	7935	7463	6834							
36HEF612D08		1-1/2	1.15	27.0	9867	9170	9016	8864	8558	8239	7873	7111	5725	4929	4127			
36HEF414D08		1	0.90	26.0	10884	9830	9658	9491	9155	8752	8209	7182	5201	3712				
36HEF614D08		1-1/2	1.31	29.0	10565	9727	9600	9479	9242	8999	8694	7952	6170	5269	4518			
36HEF416D08		1-1/2	1.03	26.0	11764	10743	10549	10360	9986	9584	9117	8129	6420	4462				
36HEF616D08		1-1/2	1.50	31.0	11745	10930	10791	10657	10397	10132	9822	9161	7433	5966	5427			
36HEF418D08		1-1/2	1.18	26.0	12713	11780	11565	11352	10925	10483	10004	9081	7443	5164				
36HEF618D08		2	1.66	33.0	12590	11898	11741	11586	11279	10967	10637	10051	8508	6692	6083			
36HEF420D08		1-1/2	1.35	27.0	13708	12678	12472	12273	11879	11472	10995	10026	8428	5952				
36HEF620D08		2	1.84	34.0	13861	12926	12763	12607	12309	12014	11708	11136	9894	7585	6749	5951		
36HEF422D08		2	1.55	27.0	14402	13255	13073	12897	12553	12196	11745	10735	8949	6380				
36HEF622D08		3	2.09	35.0	14613	13874	13708	13544	13219	12890	12545	11897	10634	8552	7371	6353		
36HEF424D08		2	1.72	28.0	15322	14161	13972	13790	13437	13074	12631	11565	9641	6998	5109			
36HEF624D08		3	2.30	36.0	15503	14687	14508	14333	13991	13648	13295	12687	11400	9810	7906	6902	5265	
36HEF426D08		2	1.89	29.0	16116	14900	14712	14533	14184	13828	13424	12338	10196	7522	5805			
36HEF626D08		3	2.39	37.0	16729	15974	15804	15637	15309	14977	14632	13991	12468	11031	8641	7515	5897	
36HEF428D08		3	2.11	31.0	16853	15707	15499	15299	14908	14509	14058	13024	10917	8150	6404			
36HEF628D08		3	2.83	38.0	17405	16428	16250	16080	15755	15438	15115	14552	12983	11305	8960	7788	6241	
36HEF430D08		3	2.28	33.0	17335	16363	16149	15938	15517	15081	14598	13412	11371	8577	6791			
36HEF630D08		3	2.47	37.0	17960	17037	16812	16586	16125	15640	15104	13967	11817	8976	7250			
36HEF434D08	3	2.64	44.0	18432	17358	17130	16908	16466	16009	15485	14333	12166	9122	7353				
36HEF412D11	1140	2	1.60	39.0	12827	11907	11757	11615	11344	11082	10817	10364	9340					
36HEF612D11		3	2.70	42.0	13079	12525	12400	12278	12042	11812	11583	11234	10595	9743	8497	7610	6963	
36HEF414D11		3	2.14	39.0	14427	13461	13311	13169	12904	12650	12399	12010	11127	9843	8500	6918	6008	
36HEF614D11		3	2.87	45.0	14005	13218	13105	12998	12800	12614	12434	12166	11668	10852	9462	8203	7473	
36HEF416D11		3	2.40	40.0	15594	14723	14556	14398	14097	13810	13528	13101	12288	11160	9809	8552	6967	
36HEF616D11		5	3.38	49.0	15569	14844	14720	14603	14386	14181	13983	13689	13164	12401	11400	9905	8456	
36HEF418D11		3	2.75	41.0	16852	16122	15952	15785	15457	15135	14814	14328	13464	12393	11161	9911	7855	
36HEF618D11		5	3.68	53.0	16689	16145	16019	15896	15656	15421	15189	14841	14239	13544	12639	11326	9636	
36HEF420D11		5	3.21	41.0	18171	17310	17136	16970	16654	16350	16053	15606	14784	13689	12247	11217	8827	
36HEF620D11		5	4.18	54.0	18374	17550	17404	17267	17014	16775	16546	16212	15649	14985	14101	13146	11207	
36HEF422D11		5	3.62	41.0	19191	18035	17872	17720	17436	17168	16907	16517	15777	14647	13063	11899	9427	
36HEF622D11		5	4.83	56.0	19370	18788	18655	18524	18269	18020	17775	17408	16774	16035	14995	14121	12893	
36HEF424D11		5	4.02	42.0	20311	19252	19082	18925	18631	18354	18085	17685	16956	15748	14180	12821	10347	
36HEF624D11		5	4.45	45.0	21363	20231	20061	19904	19612	19337	19072	18677	17980	16821	15047	13556	10928	

Performance shown is for installation type A: free inlet, free outlet. Performance ratings do not include the effects of appurtenances in the airstream. The sound ratings shown are for loudness values in the fan sones at 5 ft. (1.5 m) in a hemispherical free field calculated per AMCA Standard 301. Values shown are for installation type A: free inlet fan sone levels. *Sone values are for maximum cataloged CFM at specified RPM.

Data HEF-D 42



Prop Diameter - 42"
Prop Type - Extruded Filtered Aluminum Airfoil
Maximum MHP = 10
Maximum Frame = 256T
Tip Speed (FPM) = 11.00 x RPM

Base Material - 14 gauge Lorenized™ steel
Hood Material - 18 gauge galvanized steel
Intake Area - 47.8 sq. ft.
Intake Velocity (FPM) - (CFM/47.8)
Roof Opening Square - 49-1/2"
Matching Curb - RCG, RCA-52
Shipping Weight - 1400 lbs.

42 HEF-D

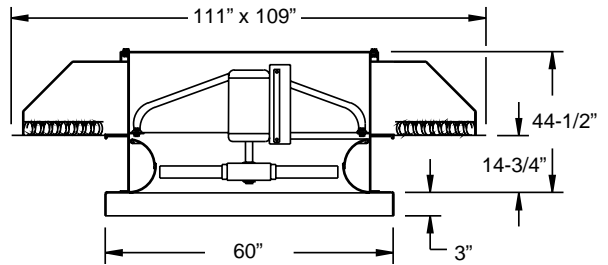
Catalog Number	RPM	HP	Max. BHP	Sones*	CFM at Static Pressure												
					0.0	0.10	0.125	0.15	0.20	0.25	0.30	0.375	0.50	0.625	0.75	0.875	1.00
42HEF414D06	680	1	0.86	23.0	13775	12863	12182	11437	10866	10497	9533						
42HEF614D06		1-1/2	1.17	27.0	14146	13752	13610	13430	12519	11688	11260	10067	8101				
42HEF416D06		1	1.00	24.0	14666	13739	13281	12696	11933	11458	10488						
42HEF616D06		1-1/2	1.39	28.0	15341	14756	14497	14078	12998	12554	12291	11663	9057				
42HEF418D06		1-1/2	1.19	24.0	15630	14950	14608	13924	12954	12570	11898						
42HEF618D06		2	1.66	30.0	16875	16395	16213	15952	14392	13817	13541	13059	9817				
42HEF420D06		1-1/2	1.33	25.0	16809	15839	15404	14836	13899	13379	12599						
42HEF620D06		2	1.89	31.0	18073	17557	17375	17149	16323	15073	14602	14015	11251				
42HEF422D06		2	1.56	26.0	17994	17165	16821	16328	14999	14341	13423						
42HEF622D06		3	2.23	32.0	19599	19599	18483	18111	17705	16879	16178	15636	14933	12634			
42HEF424D06		2	1.72	26.0	18627	17816	17390	16254	15124	14702	14128						
42HEF624D06		3	2.40	32.0	20016	19416	19199	18922	17876	16586	16074	15328	13640				
42HEF426D06		2	1.92	27.0	19333	18642	18317	17642	16284	15876	15313						
42HEF626D06		3	2.60	33.0	20967	20278	20047	19775	19015	17880	17021	16164	13989				
42HEF428D06		3	2.08	29.0	20302	19555	19265	18854	17175	16338	15682						
42HEF628D06		3	2.96	34.0	22180	21556	21351	21111	20427	18777	17547	16738	14627				
42HEF430D06	3	2.32	31.0	21282	20413	20086	19664	18256	17092	15978	14311						
42HEF432D06	3	2.56	34.0	21830	20987	20646	20158	18292	17414	15806	14575						
42HEF414D08	860	2	1.74	33.0	17421	16861	16657	16399	15404	14326	13862	13426	11513				
42HEF614D08		3	2.39	38.0	17891	17607	17526	17430	17213	16910	16356	14944	14072	12404	10650		
42HEF416D08		3	2.01	34.0	18548	17942	17735	17489	16796	15885	15248	14682	12769				
42HEF616D08		3	2.79	41.0	19402	19004	18874	18726	18333	17607	16661	16014	15456	14292	12112		
42HEF418D08		3	2.37	34.0	19767	19315	19169	18992	18473	17339	16558	16053	14563				
42HEF618D08		5	3.38	44.0	21342	21001	20902	20783	20504	20071	18673	17636	17044	16299	13543		
42HEF420D08		3	2.68	35.0	21259	20611	20396	20144	19480	18576	17794	17125	15504				
42HEF620D08		5	3.85	45.0	22857	22484	22377	22254	21975	21599	21021	19395	18354	17510	15560		
42HEF422D08		5	3.13	36.0	22757	22185	22005	21801	21273	20447	19320	18358	16220				
42HEF622D08		5	4.53	47.0	24787	23984	23744	23484	22905	22259	21598	20714	19633	18628	16689		
42HEF424D08		5	3.43	37.0	23558	23020	22846	22634	21992	20184	19323	18740	17257				
42HEF624D08		5	4.86	48.0	25314	24881	24753	24612	24281	23829	23089	21304	20173	19178	17972		
42HEF426D08		5	3.86	39.0	24451	23986	23831	23657	23165	21908	20804	20233	18981				
42HEF626D08		7-1/2	5.26	49.0	26517	26017	25869	25715	25353	24915	24334	23073	21349	20144	18300		
42HEF428D08		5	4.21	42.0	25675	25155	24990	24809	24364	23668	22266	20885	19300				
42HEF628D08		7-1/2	5.98	51.0	28051	27592	27464	27319	27002	26615	26102	24630	22016	2094	19196		
42HEF430D08	5	4.67	45.0	26915	26298	26114	25904	25402	24706	23618	21968	19777	17696				
42HEF630D08	7-1/2	6.69	54.0	29315	28782	28631	28474	28126	27718	27235	26244	23533	21719	20312			
42HEF432D08	7-1/2	5.17	49.0	27609	27021	26837	26629	26111	25279	23664	22355	19535	18143				
42HEF632D08	7-1/2	7.20	58.0	29782	29394	29284	29172	28909	28594	28177	26985	23895	22343	20666			
42HEF414D11	1140	5	4.08	53.0	23093	22714	22606	22484	22209	21853	21343	19889	18511	17946	17290	15312	
42HEF614D11		7-1/2	5.58	61.0	23716	23514	23461	23401	23281	23145	22999	22725	21987	20002	19361	18680	17509
42HEF416D11		5	4.74	55.0	24587	24172	24055	23926	23639	23291	22857	21942	20414	19654	18830	16982	
42HEF616D11		7-1/2	6.51	67.0	25719	25441	25360	25278	25096	24888	24636	24113	22385	21394	20896	20500	19949
42HEF418D11		7-1/2	5.55	56.0	26203	25890	25800	25709	25497	25247	24938	24201	22180	21434	20808	19392	
42HEF618D11		10	7.79	72.0	28290	28049	27986	27913	27767	27598	27412	27048	25691	23580	22996	22605	22163
42HEF420D11		7-1/2	6.29	55.0	28180	27731	27607	27467	27165	26812	26378	25523	23866	22908	22114	20614	
42HEF620D11		10	8.85	74.0	30299	30034	29962	29884	29728	29549	29358	29010	28153	26193	24910	24345	23787
42HEF422D11		7-1/2	7.36	56.0	30167	29766	29654	29540	29283	28988	28642	27959	26047	24564	23710	21610	
42HEF622D11		10	8.05	57.0	31228	30857	30749	30641	30388	30090	29716	28766	25867	24991	24427	23047	
42HEF424D11		10	9.06	61.0	32412	32091	31994	31897	31686	31443	31135	30451	27858	26979	26381	25234	
42HEF428D11		10	9.84	66.0	34035	33668	33562	33456	33224	32968	32670	32091	30203	27960	27087	25682	

Performance shown is for installation type A: free inlet, free outlet. Performance ratings do not include the effects of appurtenances in the airstream. The sound ratings shown are for loudness values in the fan sones at 5 ft. (1.5 m) in a hemispherical free field calculated per AMCA Standard 301. Values shown are for installation type A: free inlet fan sone levels. *Sone values are for maximum cataloged CFM at specified RPM.

48 HEF-D Data

Prop Diameter - 48"
Prop Type - Extruded Filtered Aluminum Airfoil
Maximum MHP = 10
Maximum Frame = 256T
Tip Speed (FPM) = 12.57 x RPM

Base Material - 14 gauge Lorenized™ steel
Hood Material - 18 gauge galvanized steel
Intake Area - 59.3 sq. ft.
Intake Velocity (FPM) - (CFM/59.3)
Roof Opening Square - 55-1/2"
Matching Curb - RCG, RCA-58
Shipping Weight - 1500 lbs.

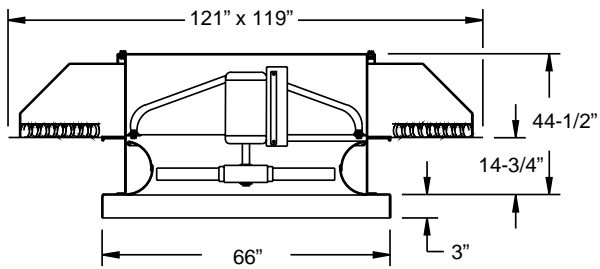


48 HEF-D

Catalog Number	RPM	HP	Max. BHP	Sones*	CFM at Static Pressure												
					0.0	0.10	0.125	0.15	0.20	0.25	0.30	0.375	0.50	0.625	0.75	0.875	1.00
48HEF414D06	680	2	1.68	30.0	20493	19619	19242	18634	16925	16258	15840	14798					
48HEF614D06		3	2.28	34.0	21047	20627	20489	20336	19932	19078	17631	16919	14763	12329			
48HEF416D06		2	1.95	30.0	21820	20888	20531	20063	18774	17868	17331	16103					
48HEF616D06		3	2.68	36.0	22824	22216	22003	21739	20821	19504	18888	18381	17109	13956			
48HEF418D06		3	2.30	30.0	23253	22566	22310	21966	20535	19402	18932	18051					
48HEF420D06		3	2.59	31.0	25008	24018	23651	23199	21951	20832	20210	19135					
48HEF414D08	860	5	3.39	43.0	25918	25318	25131	24911	24334	23275	21762	20734	19898	17951			
48HEF614D08		5	4.63	50.0	26618	26305	26214	26123	25913	25666	25359	24614	22149	21191	19502	17572	15590
48HEF416D08		5	3.91	44.0	27595	26941	26742	26517	25965	25191	24154	22864	21745	19744			
48HEF616D08		7-1/2	5.42	54.0	28865	28426	28303	28157	27827	27396	26727	25051	23746	23127	22312	19647	17644
48HEF418D08		5	4.65	44.0	29408	28916	28771	28606	28215	27653	26604	24835	23804	22393			
48HEF618D08		7-1/2	6.49	57.0	31751	31377	31267	31157	30895	30578	30164	28633	26148	25481	24825	23058	19351
48HEF420D08		7-1/2	5.21	46.0	31628	30923	30711	30472	29911	29172	28189	26719	25372	23715			
48HEF620D08		10	7.51	59.0	34006	33594	33476	33358	33083	32765	32379	31531	28665	27477	26636	25313	22447
48HEF422D08		7-1/2	6.08	47.0	33858	33233	33047	32853	32387	31804	30984	29124	27199	25270			
48HEF424D08		7-1/2	6.75	48.0	35048	34463	34290	34093	33626	32937	31332	28973	27805	26593			
48HEF414D11	1140	10	7.91	70.0	34356	33937	33819	33700	33425	33112	32740	31979	29345	27751	27017	26395	25503
48HEF416D11		10	9.20	72.0	36580	36119	35990	35862	35569	35242	34868	34175	32464	30660	29651	28848	27759

Performance shown is for installation type A: free inlet, free outlet. Performance ratings do not include the effects of appurtenances in the airstream. The sound ratings shown are for loudness values in the fan sones at 5 ft. (1.5 m) in a hemispherical free field calculated per AMCA Standard 301. Values shown are for installation type A: free inlet fan sone levels. *Sone values are for maximum cataloged CFM at specified RPM.

Data HEF-D 54



Prop Diameter - 54"
Prop Type - Extruded Filtered Aluminum Airfoil
Maximum MHP = 10
Maximum Frame = 286T
Tip Speed (FPM) = 14.16 x RPM

Base Material - 14 gauge Lorenized™ steel
Hood Material - 18 gauge galvanized steel
Intake Area - 70.3 sq. ft.
Intake Velocity (FPM) - (CFM/70.3)
Roof Opening Square - 61-1/2"
Matching Curb - RCG, RCA-64
Shipping Weight - 1700 lbs.

54 HEF-D

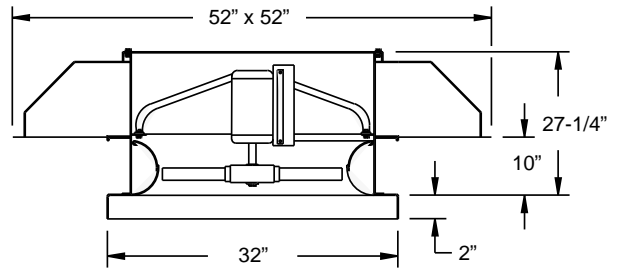
Catalog Number	RPM	HP	Max. BHP	Sones*	CFM at Static Pressure												
					0.0	0.10	0.125	0.15	0.20	0.25	0.30	0.375	0.50	0.625	0.75	0.875	1.00
54HEF414D06	680	3	3.00	37.0	29104	28205	27882	27477	26019	24096	23244	22534	19765				
54HEF614D06		5	4.09	42.0	29889	29430	29301	29147	28801	28339	27559	25082	23716	21106	18234	16695	
54HEF416D06		5	3.46	38.0	30987	30013	29684	29293	28223	26739	25615	24662	21919				
54HEF616D06		5	4.82	45.0	32413	31773	31562	31330	30723	29651	28038	26864	25927	24464	20760	18394	
54HEF418D06		5	4.12	38.0	33023	32295	32060	31778	30997	29284	27814	26927	24940				
54HEF420D06		5	4.61	39.0	35516	34470	34127	33733	32697	31254	29916	28754	26424				
54HEF414D08	860	7-1/2	6.10	55.0	36807	36160	35967	35759	35262	34605	33555	31007	29241	28310	26758		
54HEF614D08		10	8.26	63.0	37801	37458	37362	37260	37057	36813	36545	36044	34420	31511	30457	29007	26688
54HEF416D08		7-1/2	7.08	55.0	39190	38480	38272	38052	37540	36910	36092	34400	32142	30948	29106	25864	
54HEF616D08		10	9.75	69.0	40993	40516	40377	40238	39916	39540	39076	38037	35110	33776	33055	32350	30933
54HEF418D08		10	8.35	56.0	41764	41228	41074	40918	40546	40099	39498	37919	34910	33859	32554		
54HEF420D08		10	9.39	58.0	44917	44147	43928	43690	43160	42517	41726	40129	37499	36103	34521		

Performance shown is for installation type A: free inlet, free outlet. Performance ratings do not include the effects of appurtenances in the airstream. The sound ratings shown are for loudness values in the fan sones at 5 ft. (1.5 m) in a hemispherical free field calculated per AMCA Standard 301. Values shown are for installation type A: free inlet fan sone levels. *Sone values are for maximum cataloged CFM at specified RPM.

20 HER-D Data

Prop Diameter - 20"
Prop Type - Extruded Reversible Aluminum Airfoil
Maximum MHP = 2
Maximum Frame = 145T
Tip Speed (FPM) = 5.24 x RPM

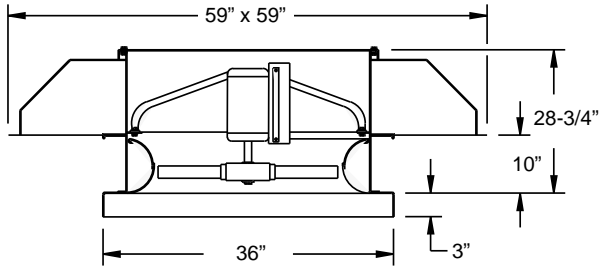
Base Material - 14 gauge Lorenized™ steel
Hood Material - 18 gauge galvanized steel
Intake/Outlet Area - 12.5 sq. ft.
Intake/Outlet Velocity (FPM) - (CFM/12.5)
Roof Opening Square - 27-1/2"
Matching Curb - RCG, RCA-30
Shipping Weight - 470 lbs.



20 HER-D

Catalog Number	RPM	HP	Max. BHP	Sones*	CFM at Static Pressure												
					0.0	0.10	0.125	0.15	0.20	0.25	0.30	0.375	0.50	0.625	0.75	0.875	1.00
20HER412D11	1140	1/6	0.09	13.3	1967	1391	1323	1243	997	694							
20HER612D11		1/6	0.16	14.2	1996	1559	1454	1388	1234	1018	865	675					
20HER414D11		1/6	0.13	13.5	2194	1649	1536	1467	1186	977							
20HER614D11		1/4	0.18	15.3	2133	1745	1614	1525	1404	1106	960	767					
20HER416D11		1/6	0.16	13.8	2377	1787	1680	1615	1362	1180	929						
20HER616D11		1/4	0.22	16.7	2363	1965	1818	1721	1602	1355	1139	919					
20HER418D11		1/4	0.18	14.2	2565	1967	1841	1767	1541	1339	1107						
20HER618D11		1/4	0.24	17.8	2537	2183	2017	1893	1747	1565	1294	1042					
20HER420D11		1/4	0.21	14.0	2762	2208	2035	1933	1747	1461	1170						
20HER620D11		1/3	0.27	18.2	2786	2384	2213	2086	1931	1792	1497	1184					
20HER422D11		1/4	0.23	14.2	2895	2312	2164	2062	1889	1555	1271						
20HER622D11		1/3	0.31	18.9	2943	2598	2440	2278	2064	1907	1662	1226	777				
20HER424D11		1/4	0.24	14.5	3097	2559	2367	2224	2036	1677	1459						
20HER624D11		1/2	0.35	19.1	3125	2765	2580	2404	2197	2059	1781	1410	854				
20HER426D11		1/4	0.25	15.3	3244	2768	2555	2382	2168	1763	1573	871					
20HER626D11		1/2	0.39	19.6	3364	3016	2864	2688	2420	2247	1964	1552	940				
20HER428D11		1/3	0.28	16.4	3395	2840	2637	2484	2285	1904	1663	1041					
20HER628D11		1/2	0.38	20.0	3503	3165	3000	2794	2512	2354	2009	1699	993				
20HER430D11		1/3	0.30	18.1	3494	3045	2832	2620	2353	1956	1770	1118					
20HER630D11		1/2	0.41	22.0	3687	3387	3205	2907	2639	2507	2196	1868	1108				
20HER432D11	1/2	0.34	20.0	3615	3183	2938	2697	2443	2056	1827	1240						
20HER632D11	1/2	0.47	23.0	3862	3574	3443	3226	2775	2590	2263	1809	1175					
20HER434D11	1/2	0.36	25.0	3708	3232	2939	2732	2515	2083	1904	1240						
20HER634D11	1/2	0.46	25.0	3925	3616	3462	3198	2793	2618	2221	1955	1174					
20HER412D17	1725	1/3	0.32	25.0	2976	2717	2588	2418	2186	2063	1978	1716	1394	926			
20HER612D17		3/4	0.59	26.0	3020	2841	2775	2693	2476	2291	2171	2057	1674	1436	1188	995	
20HER414D17		1/2	0.46	25.0	3320	3117	3038	2935	2636	2420	2299	2161	1722	1255			
20HER614D17		3/4	0.64	28.0	3228	3057	3000	2932	2758	2560	2405	2257	1954	1567	1344	1133	836
20HER416D17		3/4	0.54	25.0	3597	3363	3268	3140	2828	2635	2514	2390	1925	1656	1013		
20HER616D17		3/4	0.75	31.0	3576	3407	3350	3282	3103	2881	2710	2551	2340	1873	1596	1360	1104
20HER418D17		3/4	0.57	26.0	3881	3658	3572	3458	3131	2894	2752	2619	2150	1914	1159		
20HER618D17		1	0.84	33.0	3839	3679	3627	3569	3418	3209	2999	2787	2579	2108	1809	1546	1305
20HER420D17		3/4	0.67	26.0	4179	3971	3896	3806	3534	3225	3035	2867	2358	2138	1453		
20HER620D17		1	0.95	34.0	4216	4034	3975	3907	3734	3509	3296	3076	2856	2548	2040	1756	1483
20HER422D17		3/4	0.71	26.0	4381	4123	4032	3921	3651	3405	3231	3058	2562	2260	1551		
20HER622D17		1-1/2	1.08	35.0	4453	4282	4229	4170	4031	3850	3630	3335	3042	2733	2292	1819	1572
20HER424D17		1	0.84	26.0	4686	4437	4356	4263	4030	3758	3523	3282	2839	2431	1771		
20HER624D17		1-1/2	1.22	36.0	4729	4557	4503	4443	4294	4089	3832	3527	3250	2947	2541	2078	1741
20HER426D17		1	0.93	28.0	4909	4686	4615	4535	4335	4071	3795	3494	3075	2558	1893	1246	
20HER626D17		1-1/2	1.38	36.0	5091	4910	4856	4797	4659	4486	4271	3932	3568	3218	2811	2274	1888
20HER428D17		1-1/2	1.10	30.0	5138	4880	4795	4698	4460	4178	3927	3660	3304	2733	2111	1482	
20HER628D17		1-1/2	1.40	38.0	5301	5129	5077	5020	4885	4708	4467	4077	3715	3382	2869	2423	1979
20HER430D17		1-1/2	1.22	33.0	5287	5066	4997	4622	4739	4497	4202	3822	3394	2824	2260	1601	
20HER630D17		2	1.57	40.0	5579	5430	5385	5335	5215	5044	4745	4237	3918	3668	3086	2614	2129
20HER432D17	1-1/2	1.28	37.0	5469	5264	5200	5128	4950	4696	4346	3938	3561	2936	2355	1806		
20HER632D17	2	1.70	42.0	5843	5690	5646	5597	5486	5344	5147	4635	4080	3785	3146	2632	2199	
20HER434D17	1-1/2	1.37	44.0	5611	5401	5334	5256	5056	4735	4354	4025	3611	3022	2361	1807		
20HER634D17	2	1.74	46.0	5939	5778	5730	5678	5556	5398	5162	4599	4123	3767	3175	2787	2269	

Performance shown is for installation type A: free inlet, free outlet. Performance ratings do not include the effects of appurtenances in the airstream. The sound ratings shown are for loudness values in the fan sones at 5 ft. (1.5 m) in a hemispherical free field calculated per AMCA Standard 301. Values shown are for installation type A: free inlet fan sone levels. *Sone values are for maximum cataloged CFM at specified RPM.



Prop Diameter - 24"
 Prop Type - Extruded Reversible
 Aluminum Airfoil
 Maximum MHP = 5
 Maximum Frame = 184T
 Tip Speed (FPM) = 6.28 x RPM

Base Material - 14 gauge Lorenized™ steel
 Hood Material - 18 gauge galvanized steel
 Intake/Outlet Area - 14.9 sq. ft.
 Intake/Outlet Velocity (FPM) - (CFM/14.9)
 Roof Opening Square - 31-1/2"
 Matching Curb - RCG, RCA-34
 Shipping Weight - 600 lbs.

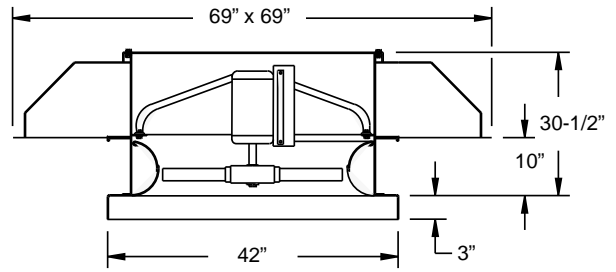
24 HER-D

Catalog Number	RPM	HP	Max. BHP	Sones*	CFM at Static Pressure												
					0.0	0.10	0.125	0.15	0.20	0.25	0.30	0.375	0.50	0.625	0.75	0.875	1.00
24HER412D08	860	1/4	0.08	11.9	2532	1710	1570	1335	912								
24HER612D08		1/4	0.17	12.8	2570	1881	1777	1689	1325	1085	887						
24HER414D08		1/4	0.13	12.2	2826	1987	1876	1643	1315	834							
24HER614D08		1/4	0.20	13.9	2747	2090	1950	1858	1441	1210	1007						
24HER416D08		1/4	0.16	12.2	3061	2172	2067	1929	1535	1098							
24HER616D08		1/4	0.23	15.0	3043	2353	2203	2110	1782	1436	1205						
24HER418D08		1/4	0.19	12.3	3303	2381	2263	2144	1737	1324							
24HER618D08		1/4	0.25	15.9	3267	2612	2418	2296	2051	1631	1365	986					
24HER420D08		1/4	0.22	12.8	3557	2634	2476	2363	1892	1428	835						
24HER620D08		1/2	0.28	16.3	3588	2866	2667	2535	2328	1863	1551	1152					
24HER422D08		1/4	0.24	13.2	3728	2798	2640	2523	2015	1532	874						
24HER622D08		1/2	0.32	16.9	3790	3159	2906	2722	2475	2087	1606	1246					
24HER424D08		1/2	0.27	13.3	3988	3065	2841	2698	2174	1733	1046						
24HER624D08		1/2	0.36	17.2	4025	3343	3068	2890	2668	2245	1860	1366					
24HER412D11	1140	1/4	0.23	18.6	3357	2656	2464	2346	2191	1821	1651	1107					
24HER612D11		1/2	0.40	19.9	3406	2993	2792	2618	2407	2279	1963	1674	1250				
24HER414D11		1/3	0.33	18.9	3746	3251	2972	2766	2552	2330	1980	1508					
24HER614D11		1/2	0.46	21.0	3641	3273	3110	2928	2656	2502	2318	1820	1417	936			
24HER416D11		1/2	0.36	19.4	4057	3469	3188	3005	2799	2642	2222	1940					
24HER616D11		3/4	0.53	23.0	4034	3667	3498	3296	2996	2834	2690	2189	1690	1239			
24HER418D11		1/2	0.37	19.8	4379	3834	3529	3305	3060	2902	3495	2226					
24HER618D11		3/4	0.58	25.0	4331	3995	3854	3669	3305	3084	2944	2492	1909	1467			
24HER420D11		1/2	0.44	19.6	4715	4243	3984	3694	3359	3179	2763	2450	1355				
24HER620D11		3/4	0.64	25.0	4757	4372	4211	4009	3639	3407	3256	2968	2163	1668			
24HER422D11		1/2	0.47	19.8	4942	4366	4116	3888	3581	3394	3056	2598	1426				
24HER622D11		3/4	0.73	26.0	5024	4676	4546	4386	3993	3674	3473	3166	2302	1770	1041		
24HER424D11		3/4	0.53	20.0	5286	4760	4545	4298	3885	3635	3363	2798	1686				
24HER624D11		1	0.82	26.0	5335	4981	4843	4664	4212	3894	3704	3421	2734	1959	1177		
24HER426D11	3/4	0.59	21.0	5538	5075	4888	4654	4172	3867	3612	2941	1800					
24HER412D17	1725	1	0.81	35.0	5080	4816	4720	4600	4245	3892	3679	3486	3164	2634	2009	1630	1157
24HER612D17		1-1/2	1.37	37.0	5155	4960	4899	4829	4657	4422	4153	3852	3570	3327	2772	2494	2190
24HER414D17		1-1/2	1.14	35.0	5668	5448	5377	5296	5087	4769	4407	4067	3769	3172	2861	2214	1711
24HER614D17		1-1/2	1.45	40.0	5510	5320	5263	5200	5054	5868	4640	4295	3917	3687	3077	2715	2440
24HER416D17		1-1/2	1.31	35.0	6140	5890	5807	5712	5455	5081	4745	4437	4152	3733	3206	2887	2253
24HER616D17		2	1.53	44.0	6104	5916	5860	5798	5651	5464	5221	4834	4425	4193	3862	3256	2895
24HER418D17		2	1.53	36.0	6626	6383	6306	6217	5987	5638	5242	4870	4544	4192	3588	3322	2712
24HER618D17		2	1.65	46.0	6553	6373	6320	6263	6133	5974	5770	5380	4859	4565	4323	3678	3288
24HER420D17		2	1.75	36.0	7134	6904	6833	6754	6563	6295	5915	5409	4973	4676	3904	3680	2900
24HER620D17		2	1.79	48.0	7197	6992	6932	6866	6717	6533	6303	5890	5359	5043	4804	4426	3767
24HER422D17		2	1.91	36.0	7479	7195	7108	7009	6772	6472	6138	5729	5302	5006	4182	3897	3114
24HER622D17		3	2.03	50.0	7602	7406	7350	7292	7160	7007	6825	6481	5841	5397	5108	4732	4211
24HER424D17		3	2.13	37.0	7999	7720	7638	7548	7342	7091	6788	6305	5709	5350	4571	4194	3535
24HER624D17		3	2.22	51.0	8073	7877	7821	7761	7626	7466	7270	6875	6167	5737	5473	5109	4522
24HER426D17		3	2.20	39.0	8380	8129	8055	7976	7798	7583	7318	6825	6109	5691	4888	4410	3934
24HER626D17		3	2.51	52.0	8690	8483	8425	8363	8229	8077	7899	7572	6893	6337	5994	5577	4996
24HER428D17		3	2.51	42.0	8770	8480	8394	8301	8089	7830	7519	7014	6379	5989	5387	4721	4154
24HER628D17		3	2.68	54.0	9048	8852	8797	8738	8610	8461	8285	7944	7160	6579	6252	5878	5103
24HER430D17		3	2.48	47.0	9024	8773	8701	8625	8455	8255	8016	7556	6712	6183	5503	4866	4502
24HER630D17		3	2.96	57.0	9523	9353	9305	9255	9144	9011	8854	8513	7440	6891	6615	6329	5534
24HER432D17		3	2.76	52.0	9336	9103	9036	8965	8804	8614	8376	7876	6909	6410	5825	5065	4621
24HER632D17		5	3.11	60.0	9974	9798	9750	9699	9589	9464	9320	9049	8247	7303	6870	6526	5708
24HER434D17		3	2.86	64.0	9577	9340	9271	9198	9027	8818	8541	7909	7010	6589	5821	5202	4840
24HER634D17		5	3.25	67.0	10137	9953	9901	9847	9730	9594	9438	9130	8166	7332	6944	6542	5644

Performance shown is for installation type A: free inlet, free outlet. Performance ratings do not include the effects of appurtenances in the airstream. The sound ratings shown are for loudness values in the fan sones at 5 ft. (1.5 m) in a hemispherical free field calculated per AMCA Standard 301. Values shown are for installation type A: free inlet fan sone levels. *Sone values are for maximum cataloged CFM at specified RPM.

30 HER-D Data

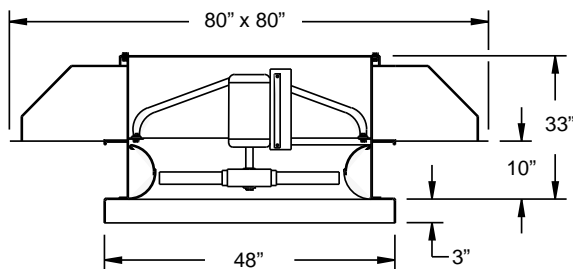
Prop Diameter - 30"
Prop Type - Extruded Reversible Aluminum Airfoil
Maximum MHP = 2
Maximum Frame = 184T
Tip Speed (FPM) = 7.85 x RPM
Base Material - 14 gauge Lorenized™ steel
Hood Material - 18 gauge galvanized steel
Intake/Outlet Area - 20.5 sq. ft.
Intake/Outlet Velocity (FPM) - (CFM/20.5)
Roof Opening Square - 37-1/2"
Matching Curb - RCG, RCA-40
Shipping Weight - 680 lbs.



30 HER-D

Catalog Number	RPM	HP	Max. BHP	Sones*	CFM at Static Pressure													
					0.0	0.10	0.125	0.15	0.20	0.25	0.30	0.375	0.50	0.625	0.75	0.875	1.00	
30HER412D08	860	1/2	0.30	18.1	4886	3697	3463	3325	2926	2487	1835	1216						
30HER612D08		1/2	0.49	19.4	4958	4203	3884	3663	3403	3094	2608	2168	1530					
30HER414D08		1/2	0.38	18.4	5452	4516	4109	3867	3584	2961	2667	1761						
30HER614D08		3/4	0.55	21.0	5300	4643	4348	4077	3734	3500	2850	2401	1763					
30HER416D08		3/4	0.51	18.5	5905	4815	4450	4226	3956	3416	3021	2356						
30HER616D08		3/4	0.67	22.0	5871	5215	4894	4590	4217	3990	3580	2849	2128	1072				
30HER418D08		3/4	0.57	18.8	6373	5345	4900	4635	4333	3867	3399	2797						
30HER618D08		3/4	0.75	24.0	6303	5711	5435	5102	4619	4350	4066	3235	2432	1419				
30HER420D08		3/4	0.61	19.3	6862	5993	5503	5136	4742	4379	3692	3199						
30HER620D08		1	0.86	24.0	6923	6245	5937	5592	5097	4808	4558	3760	2763	1746				
30HER422D08		3/4	0.68	19.8	7193	6163	5759	5450	5058	4720	3937	3336						
30HER622D08		1	0.97	25.0	7312	6709	6466	6162	5539	5138	4846	4162	2871	1994				
30HER424D08		3/4	0.73	20.0	7694	6769	6375	5983	5433	5075	4267	3680						
30HER624D08		1-1/2	1.11	26.0	7765	7149	6882	6527	5853	5468	5204	4457	3245	2188				
30HER426D08		1	0.78	21.0	8060	7249	6893	6471	5798	5402	4524	3949						
30HER626D08		1-1/2	1.26	26.0	8359	7737	7504	7214	6534	6027	5689	4910	3531	2399				
30HER428D08		1	0.89	23.0	8436	7478	7072	6660	6064	5692	4965	4176	2132					
30HER628D08		1-1/2	1.29	27.0	8703	8108	7873	7565	6780	6254	5944	5028	3736	2531				
30HER430D08		1	0.96	24.0	8680	7900	7579	7170	6356	5864	5075	4423	2327					
30HER630D08		1-1/2	1.46	29.0	9160	8641	8426	8100	7041	6567	6306	5516	4011	2821				
30HER432D08	1-1/2	1.04	26.0	8980	8246	7922	7460	6545	6087	5371	4574	2668						
30HER634D08	1-1/2	1.12	31.0	9212	8436	8047	7472	6666	6264	5377	4754	2613						
30HER412D11	1140	3/4	0.71	28.0	6477	5881	5573	5192	4711	4459	4267	3607	2688	1871	1010			
30HER612D11		1-1/2	1.22	30.0	6572	6165	6012	5819	5324	4934	4681	4437	3566	3029	2496	2048	1154	
30HER414D11		1	0.94	28.0	7226	6762	6579	6331	5655	5210	964	4624	3681	2579	1386			
30HER614D11		1-1/2	1.37	32.0	7025	6638	6505	6348	5944	5505	5178	4869	4008	3321	2829	2351	1537	
30HER416D11		1-1/2	1.17	29.0	7828	7294	7071	6764	6082	5681	5436	5151	4120	3455	1973			
30HER616D11		2	1.56	35.0	7783	7399	7267	7110	6688	6197	5837	5510	4983	3954	3366	2837	2164	
30HER418D11		1-1/2	1.27	29.0	8448	7938	7735	7464	6723	6237	5947	5649	4604	4020	2285	1258		
30HER618D11		2	1.75	37.0	8356	7993	7874	7737	7383	6899	6449	6006	5546	4470	3809	3239	2673	
30HER420D11		1-1/2	1.32	29.0	9096	8621	8450	8235	7590	6934	6540	6187	5018	4564	2902	1585		
30HER620D11		2	2.00	38.0	9177	8763	8627	8469	8066	7550	7094	6633	6156	5350	4301	3680	3058	
30HER422D11		2	1.52	29.0	9535	8948	8736	8480	7864	7337	6968	6602	5396	4813	3092	1711		
30HER624D11		2	1.73	30.0	10199	9635	9447	9231	8692	8082	7578	7079	5918	5185	3550	2046		
30HER426D11		2	1.87	32.0	10684	10179	10016	9831	9364	872	8151	7530	6362	5468	3785	2439		

Performance shown is for installation type A: free inlet, free outlet. Performance ratings do not include the effects of appurtenances in the airstream. The sound ratings shown are for loudness values in the fan sones at 5 ft. (1.5 m) in a hemispherical free field calculated per AMCA Standard 301. Values shown are for installation type A: free inlet fan sone levels. *Sone values are for maximum cataloged CFM at specified RPM.



Prop Diameter - 36"
Prop Type - Extruded Reversible Aluminum Airfoil
Maximum MHP = 5
Maximum Frame = 215T
Tip Speed (FPM) = 9.43 x RPM

Base Material - 14 gauge Lorenized™ steel
Hood Material - 18 gauge galvanized steel
Intake/Outlet Area - 28 sq. ft.
Intake/Outlet Velocity (FPM) - (CFM/28)
Roof Opening Square - 43-1/2"
Matching Curb - RCG, RCA-46
Shipping Weight - 965 lbs.

36 HER-D

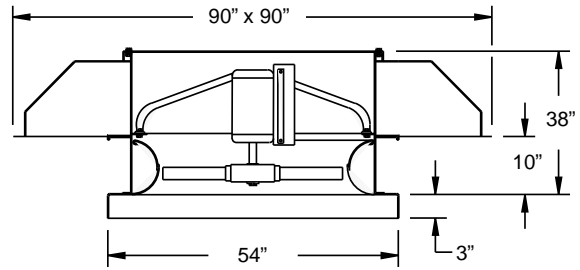
Catalog Number	RPM	HP	Max. BHP	Sones*	CFM at Static Pressure													
					0.0	0.10	0.125	0.15	0.20	0.25	0.30	0.375	0.50	0.625	0.75	0.875	1.00	
36HER412D06	680	1/2	0.35	17.3	6621	4842	4577	4385	3563	2994	2144							
36HER612D06		3/4	0.64	18.7	6719	5481	5075	4810	4477	3686	3267	2601						
36HER414D06		3/4	0.51	17.8	7388	5828	5359	5098	4528	3802	2913							
36HER614D06		3/4	0.70	20.0	7182	6111	5666	5325	4916	4234	3555	2947	1735					
36HER416D06		3/4	0.57	18.1	8003	6259	5838	5578	5179	4253	3783	2149						
36HER616D06		1	0.78	22.0	7957	6875	6377	6002	5573	5161	4267	3503	2354					
36HER418D06		3/4	0.59	18.2	8636	6924	6411	6105	5701	4744	4350	2471						
36HER618D06		1	0.85	23.0	8542	7580	7102	6637	6061	5711	4830	3968	2835					
36HER420D06		3/4	0.72	18.9	9299	7818	7137	6724	6249	5191	4808	3116						
36HER620D06		1	0.99	23.0	9382	8282	7768	7298	6696	6328	5797	4476	3225					
36HER422D06		3/4	0.75	19.6	9748	8086	7544	7161	6671	5610	5094	3323						
36HER622D06		1-1/2	1.12	24.0	9909	8947	8531	8031	7214	6735	6192	4995	3435					
36HER424D06		1	0.91	19.7	10426	8932	8318	7798	7142	6190	5483	3804						
36HER624D06		1-1/2	1.27	25.0	10523	9532	9059	8478	7650	7203	6688	5603	3794					
36HER426D06		1	1.00	21.0	10923	9615	9010	8394	7597	6694	5765	4060						
36HER626D06		1-1/2	1.42	25.0	11327	10346	9949	9457	8488	7902	7300	6208	4114					
36HER428D06		1-1/2	1.19	22.0	11432	9887	9249	8695	7976	7262	6175	4570						
36HER628D06		1-1/2	1.50	26.0	11794	10850	10440	9884	8802	8231	7695	6342	4306	2234				
36HER430D06		1-1/2	1.33	24.0	11763	10516	9960	9291	8268	7448	6360	4880						
36HER432D06		1-1/2	1.41	26.0	12170	10987	10395	9600	8552	7837	6623	5120						
36HER434D06	1-1/2	1.50	30.0	12484	11215	10470	9626	8775	7909	6797	5126							
36HER412D08	860	3/4	0.71	25.0	8374	7249	6654	6243	5788	5482	4749	4149	2528					
36HER612D08		1-1/2	1.27	27.0	8497	7794	7486	7092	6417	6018	5766	4964	3956	3154	2245			
36HER414D08		1-1/2	1.01	26.0	9343	8530	8134	7583	6777	6382	6037	4962	3444					
36HER614D08		1-1/2	1.46	29.0	9083	8428	8178	7868	7165	6647	6326	5836	4357	3575	2784			
36HER416D08		1-1/2	1.21	26.0	10121	9172	8683	8106	7382	6996	6696	5586	4578	2354				
36HER616D08		2	1.66	31.0	10063	9412	9163	8844	8064	7498	7155	6739	5198	4259	3412	2056		
36HER418D08		1-1/2	1.29	26.0	10922	10029	9593	8990	8108	7649	7340	6285	5305	2757				
36HER618D08		2	1.80	33.0	10803	10196	9978	9711	8980	8274	7808	7364	5863	4814	3937	2704		
36HER420D08		1-1/2	1.38	27.0	11761	10948	10604	10124	9026	8403	8037	6994	5970	3506				
36HER620D08		3	2.08	34.0	11865	11171	10921	10614	9824	9107	8621	8145	7062	5447	4472	3270		
36HER422D08		1-1/2	1.50	27.0	12329	11322	10914	10426	9539	8957	8575	7739	6308	3702				
36HER622D08		3	2.34	35.0	12532	11888	11675	11427	10789	10000	9334	8690	7603	5863	4683	3707		
36HER424D08		2	1.71	28.0	13186	12239	11894	11481	10519	9724	9199	8471	6784	4330				
36HER624D08		3	2.68	36.0	13308	12659	12437	12175	11456	10549	9875	9264	8185	6881	5237	4070		
36HER426D08		2	1.89	29.0	13814	12971	12675	12321	11393	10448	9787	9077	7142	4617				
36HER626D08		3	2.31	31.0	14458	13474	13118	12694	11696	10848	10255	9583	7616	5333	3058			
36HER430D08		3	2.60	33.0	14877	14047	13770	13445	12595	11544	10692	9861	7890	5678	3379			
36HER630D08		3	2.81	37.0	15391	14619	14355	14040	13145	11903	11029	10256	8195	6067	3699			
36HER434D08		3	2.97	44.0	15788	14994	14708	14354	13239	11973	11284	10551	8449	6062	3673			
36HER634D08		2	1.73	39.0	11100	10499	10277	9996	9161	8416	7970	7565	6700	5669	4205	3380	2261	
36HER412D11	1140	3	2.97	42.0	11264	10822	10681	10521	10120	9570	8974	8338	7744	7082	5949	5303	4624	
36HER612D11		3	2.36	39.0	12385	11886	11723	11536	11043	10288	9508	8801	8160	6760	6100	4596	3286	
36HER414D11		5	3.18	45.0	12040	11610	11480	11337	10997	10566	10038	9283	8496	7971	6507	5794	5189	
36HER614D11		3	2.82	40.0	13416	12849	12659	12437	11831	10968	10263	9617	9003	7827	6889	6099	4265	
36HER416D11		5	3.40	49.0	13339	12913	12783	12641	12303	11865	11298	10451	9595	9082	8192	6916	6157	
36HER616D11		3	2.99	41.0	14479	13929	13752	13545	13004	12175	11321	10549	9859	8859	7743	7063	5107	
36HER418D11		5	3.65	53.0	14320	13913	13792	13662	13362	12990	12510	11621	10516	9900	9279	7797	6990	
36HER618D11		5	3.62	41.0	15590	15067	14905	14723	14277	13640	12758	11693	10791	10012	8405	7931	5917	
36HER420D11		5	3.91	54.0	15728	15264	15126	14977	14366	14205	13666	12733	11602	10940	10385	9402	7909	
36HER620D11		5	3.91	41.0	16343	15701	15498	15272	14725	14028	13282	12405	11507	10771	8967	8380	6336	
36HER422D11		5	4.40	56.0	16612	16169	16042	15907	15608	15254	14830	14028	12614	11694	11036	10111	8920	
36HER622D11		5	4.53	42.0	17480	16849	16661	16456	15981	15399	14699	13624	12364	11560	9739	9014	7187	
36HER424D11		5	4.77	57.0	17641	17197	17070	16934	16624	16254	15792	14864	13328	12442	11848	10890	9674	
36HER624D11		5	4.98	45.0	18312	17743	17577	17397	16986	16488	15867	14738	13203	12302	10340	9488	7720	

Performance shown is for installation type A: free inlet, free outlet. Performance ratings do not include the effects of appurtenances in the airstream. The sound ratings shown are for loudness values in the fan sones at 5 ft. (1.5 m) in a hemispherical free field calculated per AMCA Standard 301. Values shown are for installation type A: free inlet fan sone levels. *Sone values are for maximum cataloged CFM at specified RPM.

42 HER-D Data

Prop Diameter - 42"
Prop Type - Extruded Reversible
 Aluminum Airfoil
Maximum MHP = 10
Maximum Frame = 256T
Tip Speed (FPM) = 11.00 x RPM

Base Material - 14 gauge Lorenized™ steel
Hood Material - 18 gauge galvanized steel
Intake/Outlet Area - 35.5 sq. ft.
Intake/Outlet Velocity (FPM) - (CFM/35.5)
Roof Opening Square - 49-1/2"
Matching Curb - RCG, RCA-52
Shipping Weight - 1320 lbs.

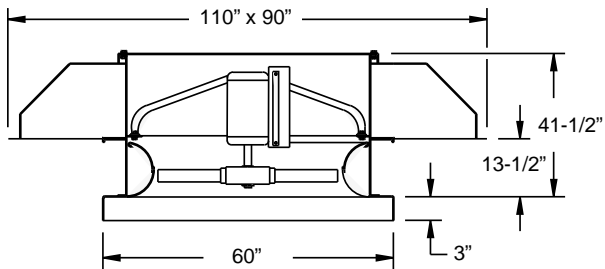


42 HER-D

Catalog Number	RPM	HP	Max. BHP	Sones*	CFM at Static Pressure														
					0.0	0.10	0.125	0.15	0.20	0.25	0.30	0.375	0.50	0.625	0.75	0.875	1.00		
42HER414D06	680	1-1/2	1.01	23.0	12267	11057	9642	8974	8417	8021	7289	6164	3264						
42HER614D06		1-1/2	1.50	27.0	12437	11589	11210	10652	9546	9030	8608	7783	6577	5302					
42HER416D06		1-1/2	1.08	24.0	12997	11420	10590	9953	9248	8761	8024	6937	3667						
42HER616D06		2	1.80	28.0	13575	12694	12234	11348	10238	9756	9450	8754	7289	6097					
42HER418D06		1-1/2	1.28	24.0	13749	12312	11468	10794	10073	9632	8995	7680	4786						
42HER618D06		2	1.96	30.0	14926	14232	13943	13481	11347	10765	10444	9886	7959	6610					
42HER420D06		1-1/2	1.43	25.0	14768	13238	12458	11703	10800	10271	9585	8375	5338						
42HER620D06		3	2.39	31.0	15809	14938	14589	14103	12635	11766	11290	10684	8707	7634					
42HER422D06		2	1.84	26.0	15826	14482	13846	12999	11705	11049	10186	8977	7146						
42HER622D06		3	2.60	32.0	17113	16368	16108	15783	14643	12878	12126	11375	9789	7734	6281				
42HER424D06		2	1.81	26.0	16495	15094	14112	12861	11841	11316	10439	9209	6194						
42HER624D06		3	2.85	32.0	17528	16510	16099	15520	13859	12895	12317	11737	10585	8117					
42HER426D06		3	2.31	27.0	16918	15412	14411	13535	12676	12211	11488	9802	8052						
42HER626D06		3	2.46	29.0	17956	16725	16168	15289	13450	12644	11883	10289	8314						
42HER428D06	3	2.68	31.0	18742	17040	16429	15729	14272	13124	12226	11089	8314							
42HER628D06	3	2.19	33.0	15514	14813	14547	14181	12192	11222	10769	10310	8823	7602	5440					
42HER430D06	5	3.03	38.0	15729	15155	14969	14753	14177	13258	12335	11584	10735	9549	8588	7816	6701			
42HER630D06	3	2.24	34.0	16437	15496	15137	14669	13391	12434	11850	11278	9866	8627	5763	3060				
42HER432D06	5	3.65	41.0	17168	16587	16392	16162	15471	14051	13166	12495	11850	10768	9469	8803	7706			
42HER632D06	3	2.72	34.0	17389	16531	16205	15781	14501	13495	12905	12358	11099	9432	7429	3682				
42HER434D06	5	3.97	44.0	18877	18395	18245	18075	17633	16809	14674	13797	13109	12291	10502	9472	8356			
42HER634D06	5	3.28	35.0	18677	17717	17372	16943	15754	14608	13867	13199	11844	10319	8629	4448				
42HER436D06	5	4.84	45.0	19994	19390	19201	18988	18450	17637	16415	15148	14152	13338	11592	10588	9651			
42HER636D06	5	3.71	36.0	20016	19126	18829	18475	17510	16170	15114	14206	12485	11132	10024	6226				
42HER438D06	7-1/2	5.27	47.0	21643	21107	20949	20778	20371	19837	19023	16788	15178	14163	12923	11008	9778			
42HER638D06	5	4.00	37.0	20861	19989	19676	19282	17844	16025	15207	14499	12679	11414	9820	5482				
42HER440D06	7-1/2	5.76	48.0	22168	21462	21241	20990	20359	19393	18005	16606	15427	14710	13937	11838	10263			
42HER640D06	5	4.55	39.0	21396	20487	20150	19711	18223	16929	16237	15626	14034	12150	11017	7095				
42HER442D06	7-1/2	6.10	49.0	23293	22444	22188	21910	21257	20449	19490	18085	16514	15361	14182	12823	10432			
42HER642D06	5	4.90	42.0	22710	21875	21606	21291	20447	18972	17419	16229	14503	12740	11366	8446				
42HER444D06	7-1/2	6.78	51.0	24728	24048	23845	23623	23102	22410	21352	18935	17054	15973	14831	13406	11260			
42HER644D06	7-1/2	5.39	45.0	23703	22502	22131	21724	20777	19656	18486	17003	15201	13710	11306	9236				
42HER446D06	7-1/2	6.40	49.0	24120	23060	22712	22306	21237	19744	18412	17208	15123	14058	12016	9859				
42HER646D06	5	4.31	53.0	20565	20099	19962	19809	19451	18970	18148	15649	14412	13826	13139	11751	10607			
42HER448D06	5	4.77	61.0	20850	20454	20340	20223	19957	19650	19277	18518	16671	15536	14905	14251	13445			
42HER648D06	5	4.61	55.0	21789	21169	20981	20776	20293	19656	18785	17339	15906	15146	14336	13117	11901			
42HER450D06	7-1/2	5.40	67.0	22758	22358	22245	22123	21853	21524	21111	20111	17722	16751	16186	15722	15081			
42HER650D06	7-1/2	5.37	56.0	23050	22480	22311	22127	21687	21110	20298	18779	17314	16558	15858	14752	13397			
42HER452D06	7-1/2	6.40	72.0	25023	24684	24590	24494	24280	24036	23747	23165	19955	18505	17853	17390	16869			
42HER652D06	7-1/2	5.73	55.0	24758	24113	23923	23718	23243	22648	21876	20420	18646	17708	16905	15738	14506			
42HER454D06	7-1/2	7.20	74.0	26504	26077	25962	25835	25564	25258	24904	24217	22275	20402	19396	18777	18180			
42HER654D06	7-1/2	6.78	56.0	26533	25922	25749	25560	25142	24645	24028	22762	20401	19063	18169	16602	15438			
42HER456D06	10	8.48	77.0	28690	28306	28203	28097	27866	27613	27331	26833	25615	22959	21056	20141	19408			
42HER656D06	7-1/2	7.29	57.0	27653	27065	26892	26705	26281	25741	24981	22812	20433	19413	18674	16857	15813			
42HER458D06	10	9.37	79.0	29385	28889	28753	28606	28291	27933	27510	26704	24436	22375	21251	20469	19896			
42HER658D06	10	7.83	61.0	28362	27757	27576	27379	26925	26328	25467	23563	21767	20894	20193	18681	16906			
42HER460D06	10	9.88	81.0	30877	30276	30109	29939	29568	29159	28707	27912	26243	24413	22957	21916	21049			
42HER660D06	10	8.84	66.0	30103	29526	29360	29191	28805	28360	27817	26687	23608	21805	20856	19303	17716			
42HER462D06	10	9.74	74.0	31420	30574	30339	30093	29562	28970	28307	27162	24975	22984	21462	20185	19063			

Performance shown is for installation type A: free inlet, free outlet. Performance ratings do not include the effects of appurtenances in the airstream. The sound ratings shown are for loudness values in the fan sones at 5 ft. (1.5 m) in a hemispherical free field calculated per AMCA Standard 301. Values shown are for installation type A: free inlet fan sone levels. *Sone values are for maximum cataloged CFM at specified RPM.

Data HER-D 48



Prop Diameter - 48"
Prop Type - Extruded Reversible Aluminum Airfoil
Maximum MHP = 10
Maximum Frame = 256T
Tip Speed (FPM) = 12.57 x RPM

Base Material - 14 gauge Lorenized™ steel
Hood Material - 18 gauge galvanized steel
Intake/Outlet Area - 43.2 sq. ft.
Intake/Outlet Velocity (FPM) - (CFM/43.2)
Roof Opening Square - 55-1/2"
Matching Curb - RCG, RCA-58
Shipping Weight - 1410 lbs.

48 HER-D

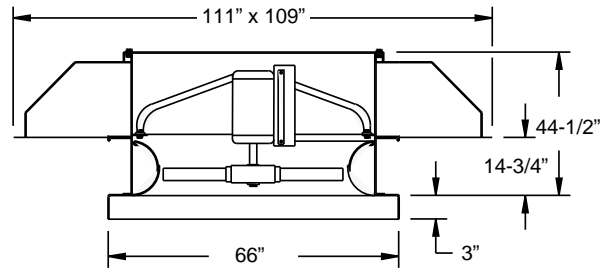
Catalog Number	RPM	HP	Max. BHP	Sones*	CFM at Static Pressure												
					0.0	0.10	0.125	0.15	0.20	0.25	0.30	0.375	0.50	0.625	0.75	0.875	1.00
48HER414D06	680	3	2.04	30.0	18250	17147	16612	15372	13267	12616	12178	11192	9049	5907			
48HER614D06		3	2.94	34.0	18503	17630	17316	16925	15711	14397	13680	12965	11388	9995	8779		
48HER416D06		3	2.13	30.0	19336	17848	17169	16245	14704	13876	13329	12248	10225	6316			
48HER418D06		3	2.53	30.0	20455	19101	18483	17584	15953	15109	14593	13665	11244	8217			
48HER414D08	860	5	4.56	43.0	23081	22338	22095	21811	21008	18696	17094	16141	15257	13721	11839	10610	7461
48HER614D08		7-1/2	5.28	50.0	23401	22777	22589	22384	21899	21259	20335	18633	17150	16200	15003	13520	12639
48HER416D08		5	4.71	44.0	24455	23462	23131	22749	21711	20235	18971	17806	16678	15103	13284	12332	7980
48HER616D08		7-1/2	5.75	54.0	25542	24913	24722	24512	23993	23240	21831	19825	18504	17783	16842	15052	13952
48HER418D08		7-1/2	5.35	44.0	25870	24959	24661	24317	23374	21911	20562	19382	18295	16929	14909	13189	10383
48HER618D08		7-1/2	6.57	57.0	28084	27558	27402	27240	26852	26364	25637	22252	20430	19653	18870	17534	15371
48HER420D08		7-1/2	6.14	46.0	27787	26762	26435	26060	25106	23762	22325	20861	19529	18041	16169	14662	11976
48HER620D08		7-1/2	7.04	59.0	29746	29082	28889	28678	28199	27600	26795	24878	22390	21245	20343	19338	16849
48HER422D08		7-1/2	7.27	47.0	29779	28817	28522	28195	27409	26332	24861	22808	21015	19175	17232	16015	14540
48HER622D08		7-1/2	6.59	70.0	30596	30080	29936	29780	29439	29039	28539	27394	23079	21652	20905	20244	19340
48HER414D11	1140	10	8.25	81.0	31020	30575	30456	30329	30060	29762	29426	28830	27385	25218	23634	22754	2207
48HER614D11		10	7.60	72.0	32416	31733	31536	31328	30866	30318	23651	28300	25589	23927	22954	22132	21109
48HER416D11		10	9.32		33858	33412	33290	33166	32889	32580	32229	31575	29662	26729	25386	24550	23987
48HER616D11		10	8.89	74.0	34293	33665	33484	33279	32876	32379	31778	30538	27721	26019	25009	24273	23405

Performance shown is for installation type A: free inlet, free outlet. Performance ratings do not include the effects of appurtenances in the airstream. The sound ratings shown are for loudness values in the fan sones at 5 ft. (1.5 m) in a hemispherical free field calculated per AMCA Standard 301. Values shown are for installation type A: free inlet fan sone levels. *Sone values are for maximum cataloged CFM at specified RPM.

54 HER-D Data

Prop Diameter - 54"
Prop Type - Extruded Reversible Aluminum Airfoil
Maximum MHP = 10
Maximum Frame = 286T
Tip Speed (FPM) = 14.16 x RPM

Base Material - 14 gauge Lorenized™ steel
Hood Material - 18 gauge galvanized steel
Intake/Outlet Area - 54.3 sq. ft.
Intake/Outlet Velocity (FPM) - (CFM/54.3)
Roof Opening Square - 61-1/2"
Matching Curb - RCG, RCA-64
Shipping Weight - 1585 lbs.



54 HER-D

Catalog Number	RPM	HP	Max. BHP	Sones*	CFM at Static Pressure												
					0.0	0.10	0.125	0.15	0.20	0.25	0.30	0.375	0.50	0.625	0.75	0.875	1.00
54HER414D06	680	5	3.60	37.0	25918	24792	24376	23818	20776	18894	18084	17337	15231	12938			
54HER416D06		5	4.36	38.0	27460	35948	25381	24657	22615	20951	19935	18980	16818	14585	12251		
54HER418D06		5	4.79	38.0	29050	27670	27156	26501	24488	22726	21703	20769	18877	16090	13206		
54HER414D08	860	7-1/2	7.28	55.0	32779	31978	31738	31474	30828	29895	27861	24365	22703	21722	20238	17614	16359
54HER614D08		7-1/2	7.38	63.0	33233	32555	32357	32150	31686	31134	30447	28977	25948	24412	23354	22135	20611
54HER416D08		7-1/2	7.48	55.0	34729	33665	33340	32977	32099	30912	29287	27033	24973	23753	22128	19758	18443
54HER616D08		10	8.22	69.0	36274	35591	35391	35184	34698	34111	33321	31176	27726	26337	25506	24662	23216
54HER418D08		10	8.68	56.0	36739	35761	35463	35134	34344	33264	31695	29297	27190	26043	24659	22485	20344
54HER618D08		10	9.75	74.0	39884	39303	39145	38972	38597	38160	37632	36491	30861	29076	28155	27357	26293
54HER420D08		10	9.21	58.0	39462	38356	38024	37661	36813	35722	34277	31821	29204	27806	26272	24092	22203

Performance shown is for installation type A: free inlet, free outlet. Performance ratings do not include the effects of appurtenances in the airstream. The sound ratings shown are for loudness values in the fan sones at 5 ft. (1.5 m) in a hemispherical free field calculated per AMCA Standard 301. Values shown are for installation type A: free inlet fan sone levels. *Sone values are for maximum cataloged CFM at specified RPM.



LOREN COOK COMPANY

2015 E. DALE STREET
SPRINGFIELD, MO 65803-4637

417.869.6474

FAX 417.862.3820

lorencook.com