



# COOK

# LPD

DATE: \_\_\_\_\_

PROJECT: \_\_\_\_\_

LOCATION: \_\_\_\_\_



## Low Profile Centrifugal Exhaust Ventilator Roof Mounted/Direct Drive

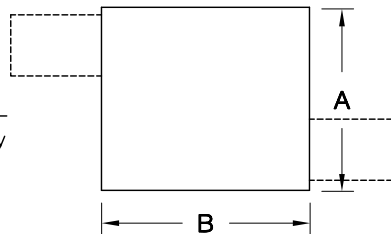
### DIMENSION DATA

Size	A	B	C	D ID	E ID	F	G	H	I	J	T Sq.	Ship Wt.	Roof Opening Sq.*
100	22-1/16	29-7/8	13-7/8	6-11/16	6-25/32	52-3/16	2	1-1/32	8-19/32	1-9/32	20	110	15-1/2
120	25-11/16	32-3/8	15-3/8	8	8-5/32	58-13/16	2	27/32	7-29/32	15/32	24	130	19-1/2
135	28-7/16	34-1/2	16-3/8	9	9-3/16	64-1/8	2	2-7/32	8-15/16	1-9/16	24	146	19-1/2
150	31-1/8	36-11/16	17-3/8	10	10-7/32	69-3/8	2	3-9/16	9-15/16	2-3/4	24	162	19-1/2
165	33-13/16	39	18-3/8	11	11-7/32	74-11/16	2	4-29/32	10-15/16	4-1/16	24	183	19-1/2

ALL DIMENSIONS IN INCHES. WEIGHTS IN LBS.  
\* ROOF OPENING SIZE FOR CURBS SUPPLIED BY COOK ONLY.

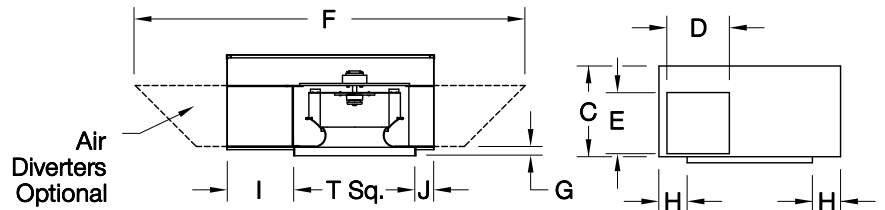
### STANDARD CONSTRUCTION FEATURES:

Hinged wheel access door (sizes 100-165) –  
Ventilator housing of heavy gauge galvanized steel –  
Backward inclined all aluminum wheel – Permanently  
lubricated motors – Corrosion resistant fasteners –  
Transit tested packaging.



### ACCESSORIES

1. DISCONNECT SWITCH
2. FSC CONTROL
3. GRAVITY BACKDRAFT DAMPER
4. MOTORIZED BACKDRAFT DAMPER
5. RCG GALVANIZED CURB
6. RCA ALUMINUM CURB
7. DIVERTERS
8. SPECIAL



QTY	MARK	CATALOG NUMBER	FAN INFORMATION			MOTOR INFORMATION					ACCESSORIES								
			CFM	SP	RPM	HP	VOLTS	HZ	PH	TYPE									

MOTOR TYPE: ODP (OPEN DRIP-PROOF); 2 SP (2 SPEED); X-PRF (EXPLOSION PROOF);  
TEFC (TOTALLY ENCLOSED FAN COOLED).

LP002R02