



# COOK

# Inlet Safety Screen

DATE: \_\_\_\_\_

PROJECT: \_\_\_\_\_

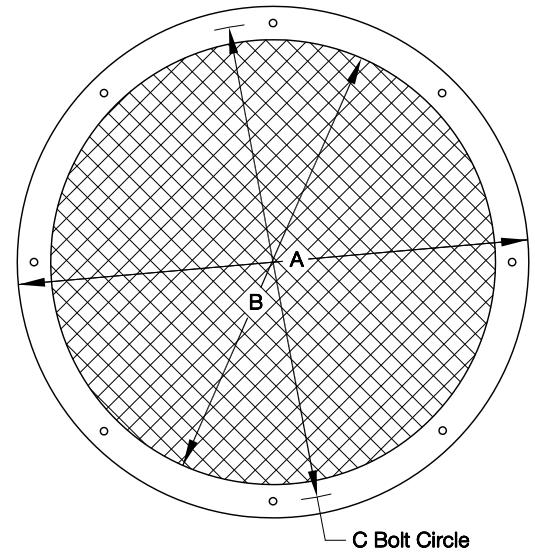
LOCATION: \_\_\_\_\_

Accessory Data Sheet  
CA, CCP, CF, CIC  
CPA, CPL, CPS, CPV, TCN

**DIMENSION DATA**

Size	CA, CCP, CF, CIC CPA, CPL, CPS, CPV			TCN		
	A	B	C	A	B	C
60	-	-	-	13-1/2	10-1/2	12
70	-	-	-	13-1/2	10-1/2	12
80	-	-	-	13-1/2	10-1/2	12
100	13-1/2	10-1/2	12	13-1/2	10-1/2	12
120	16-1/8	13-1/8	14-5/8	16-1/8	13-1/8	14-5/8
135	17-5/8	14-5/8	16-1/8	17-5/8	14-5/8	16-1/8
150	19-1/8	16-1/8	17-5/8	19-1/8	16-1/8	17-5/8
165	20-5/8	17-5/8	19-1/8	20-5/8	17-5/8	19-1/8
180	22-1/8	19-1/8	20-5/8	22-1/8	19-1/8	20-5/8
195	23-1/4	20-1/4	21-3/4	23-1/4	20-1/4	21-3/4
210	25	22	23-1/2	25	22	23-1/2
225	26-1/2	23-1/2	25	26-1/2	23-1/2	25
245	28-1/2	25-1/2	27	28-1/2	25-1/2	27
270	31-1/4	27-1/4	28-3/4	31-1/4	27-1/4	28-3/4
300	34-1/4	30-1/4	31-3/4	34-1/4	30-1/4	31-3/4
330	37-1/4	33-1/4	34-3/4	37-1/4	33-1/4	34-3/4
365	40-3/4	36-3/4	38-1/4	40-3/4	36-3/4	38-1/4
402	44-1/2	40-1/2	42	44-1/2	40-1/2	42
445	48-3/4	44-3/4	46-1/4	48-3/4	44-3/4	46-1/4
490	54-1/4	50-1/4	51-3/4	54-1/4	50-1/4	51-3/4
540	59-1/4	55-1/4	56-3/4	-	-	-
600	65-1/4	61-1/4	62-3/4	-	-	-
660	71-1/4	67-1/4	68-3/4	-	-	-
730	78-1/4	74-1/4	75-3/4	-	-	-

ALL DIMENSIONS IN INCHES.



**NOTES:**

Screen: 1" X 16 ga. expanded metal  
Frame: 3/16" flat bar