

MARK: _____

PROJECT: _____

DATE: _____

Accessory Data Sheet Fan Monitor RPM Package

Product Description

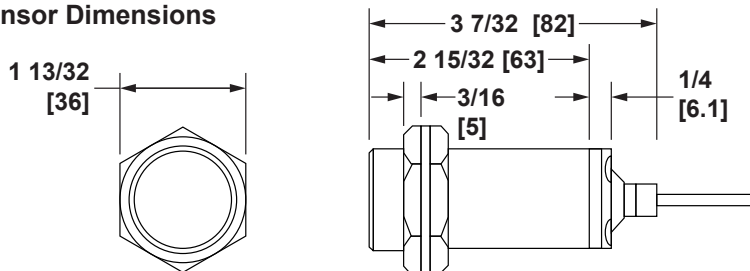
The FM RPM Package is a sensor and transmitter that can be added to the Fan Monitor Hub. It allows for fan or motor RPM to be monitored. The transmitter requires a 24VDC power source and outputs a 4-20mA signal back to the Fan Monitor. The sensor mounts using a supplied bracket. A customer supplied ferrous metal target attached to either the fan shaft or motor is required for proper operation.

Specifications

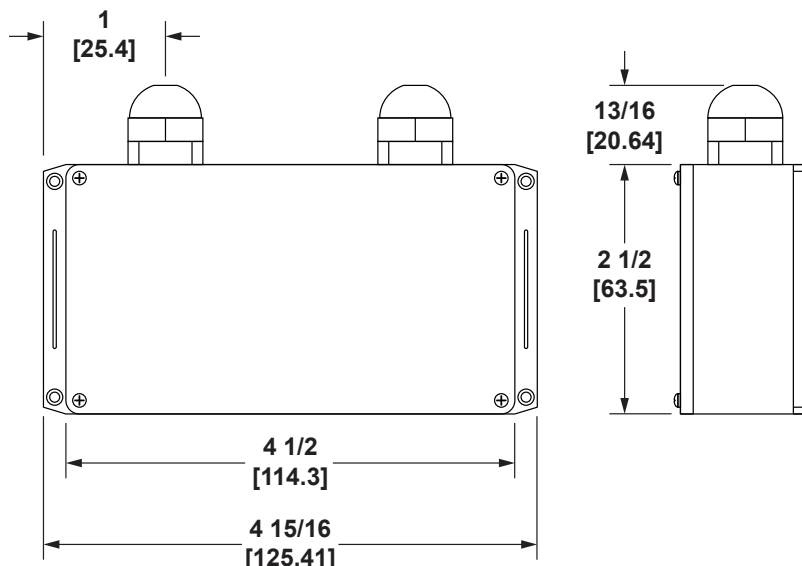
Sensor Operating Temperature	-13 to 158F (-25 to 70C)
Sensor Enclosure Rating	IP67
Sensing Range	0.59" (15mm) \pm 10%
Sensor Material	Stainless Steel
Sensor Output Configuration	PNP
Power Supply	24VDC @ 100mA
Output Current	4-20mA
Speed Range	10-4000
Accuracy	\pm 1%
Transmitter Enclosure Rating	IP34
Sensor Cable Length	6.5 Feet

All Dimensions in inches [millimeters].

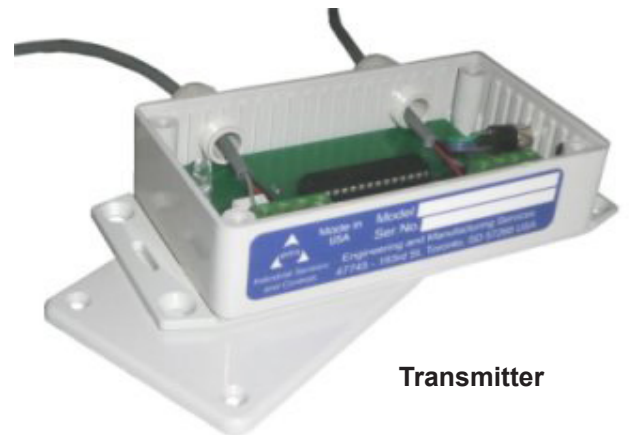
Sensor Dimensions



Transmitter Dimensions



Sensor



Transmitter