



VFD

DATE: _____

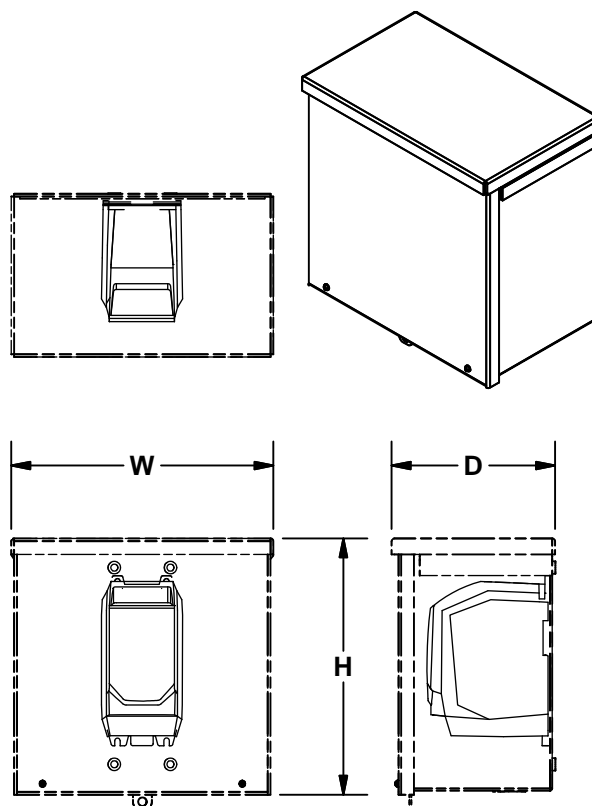
PROJECT: _____

LOCATION: _____

Accessory Data Sheet
Variable Frequency Drive
Micro Drive
NEMA 3R Enclosure
Invertek E2 Series
Single Phase Input
Three Phase Output

SPECIFICATIONS:

Input Range: 200-240 \pm 10% VAC Single Phase / 48-62Hz
Output Ratings: Output Power 230V Three Phase 1/2-5 HP
Overload Capacity 150% Overload for 60 sec.
Output Frequency 0~120Hz, .1Hz resolution
Ambient Condition: Temperature Operating 10 to 40°C
Altitude up to 2000m maximum UL approved
Above 1000m derate by 1% per 100m
Enclosure: NEMA 3R
Programming: Built in keypad
Control Specifications: Control Method single phase V/F with starting
boost
PWM Frequency 4-32kHz Effective
Stopping Modes:
Ramp to stop adjustable .1 to 600 seconds
Coast to stop
Motor flux braking
Skip Frequency single point user adjustable
Setpoint Control
MODBUS RTU, Profibus DP, DeviceNet, EthernetIP
I/O Specifications: Power Supply 24 Volt DC, 100mA,
10 Volt DC, 5mA for potentiometer
Programmable Inputs: 4 Total, 2 Digital, 2 D/A selectable
Programmable Outputs: 2 Total, 1 D/A selectable, 1 relay
Relay Output: Maximum 250V/6A AC, 30V/5A DC
Analog Output: 0 to 10 Volt
Control Features: Internal PID control with feedback
Standards: UL, cUL
Compliance:



Size VO1D10N3RG shown.

DIMENSION DATA

Catalog No.	Voltage	HP	Output*	H	W	D	Wt.
VO1D10N3RG	200-240	1/2	2.3	10	10	6	11
VO1D12N3RG	200-240	1	4.3	10	10	6	11
VO1D14N3RG	200-240	2	7.0	10	10	6	11
VO1D15N3RG	200-240	3	10.5	12	12	8	18
VO1D16N3RG	200-240	5	18.0	18	12	8	27

ALL DIMENSIONS IN INCHES. WEIGHTS IN LBS.
*RATED OUTPUT CURRENT (AMPS)

X1037R00