



# VFD

DATE: \_\_\_\_\_

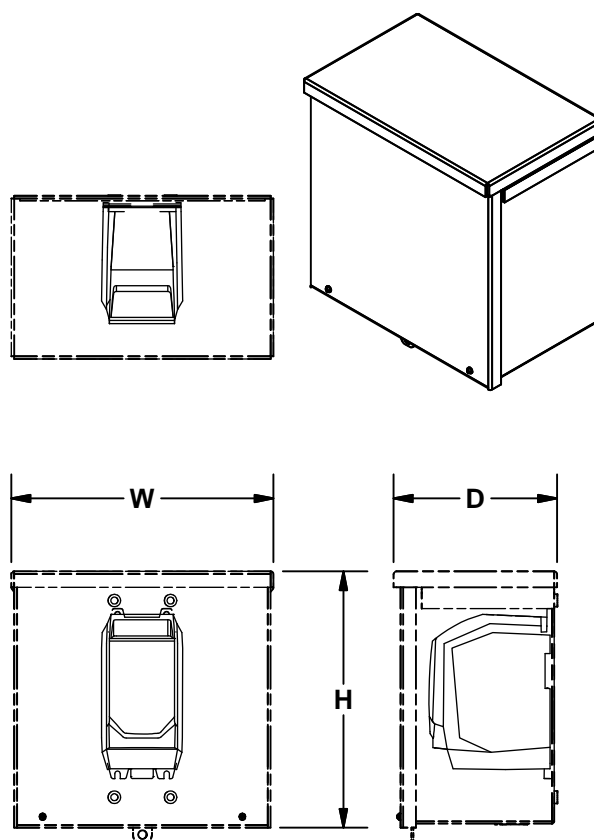
PROJECT: \_\_\_\_\_

LOCATION: \_\_\_\_\_

**Accessory Data Sheet**  
**Variable Frequency Drive**  
**Micro Drive**  
**NEMA 1 Enclosure**  
**Invertek E2 Series**  
**Single Phase**

**SPECIFICATIONS (PCS Motors Only):**

Input Range: 200-240 $\pm$ 10% VAC Single Phase / 48-62Hz  
Output Ratings: Output Power 240V Single Phase 1/2~1-1/2 HP  
Overload Capacity 150% Overload for 60 sec.  
Output Frequency 0~120Hz, .1Hz resolution  
Ambient Condition: Operating Temperature 10 to 40°C  
Altitude up to 2000m maximum UL approved  
Above 1000m derate by 1% per 100m  
Enclosure: NEMA 1  
Programming: Built in keypad  
Control Specifications: Control Method single phase V/F with starting  
boost  
PWM Frequency 4-32kHz Effective  
Stopping Modes:  
Ramp to stop adjustable .1 to 600 seconds  
Coast to stop  
Motor flux braking  
Skip Frequency single point user adjustable  
Setpoint Control  
MODBUS RTU, Profibus DP, DeviceNet, EthernetIP  
I/O Specifications: Power Supply 24 Volt DC, 100mA,  
10 Volt DC, 5mA for potentiometer  
Programmable Inputs: 4 Total, 2 Digital, 2 D/A selectable  
Programmable Outputs: 2 Total, 1 D/A selectable, 1 relay  
Relay Output: Maximum 250V/6A AC, 30V/5A DC  
Analog Output: 0 to 10 Volt  
Control Features: Internal PID control with feedback  
Standards: UL, cUL  
Compliance:



Size VO1A10N1ED shown.

**DIMENSION DATA**

Catalog No.	Voltage	HP	Output*	H	W	D	Wt.
VO1A10N1ED	200-240	1/2	4.3	10	10	6	11
VO1A12N1ED	200-240	1	7.0	10	10	6	11
VO1A13N1ED	200-240	1-1/2	10.5	12	12	8	18

ALL DIMENSIONS IN INCHES. WEIGHTS IN LBS.  
\*RATED OUTPUT CURRENT (AMPS)