

COOK

Inlet Vane Damper

INSTALLATION, OPERATION, AND MAINTENANCE MANUAL

This publication contains the installation, operation and maintenance instructions for standard Inlet Vane Damper's on Centrifugal Blower units.

Carefully read this publication prior to any installation or maintenance procedure.

For additional safety information, refer to AMCA publication 410-96, *Safety Practices for Users and Installers of Industrial and Commercial Fans*.

All of the publications listed above can be obtained from Loren Cook Company by phoning 417/869-6474, extension 166; by FAX at 417/862-0968; or by e-mail at info@loren-cook.com.

For information on special equipment or torque settings, contact Loren Cook Company Customer Service Department at 417/869-6474.

Receiving and Inspection

Carefully inspect the Inlet Vane Damper for any damage and shortage immediately upon receipt.

- Turn the blower wheel by hand to ensure it turns freely and does not bind.
- Inspect dampers for free operation of all moving parts.
- Record on the *Delivery Receipt* any visible sign of damage.

WARNING

This unit has rotating parts. Safety precautions should be exercised at all times during installation, operation, and maintenance. ALWAYS disconnect power prior to working on fan.

Handling

Lift unit by the outside housing or by the blower mounting brace. **Never** lift by the linkage.

Storage

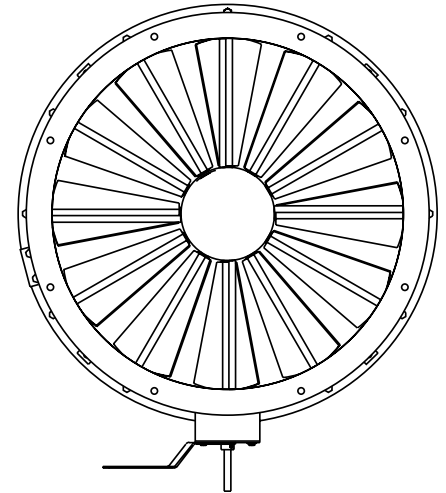
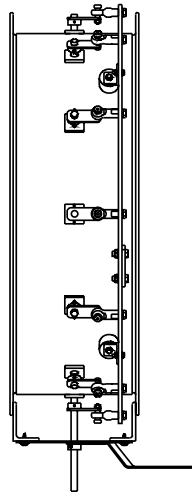
If the unit is stored for any length of time prior to installation, store the unit in its original shipping crate.

Preventive Maintenance

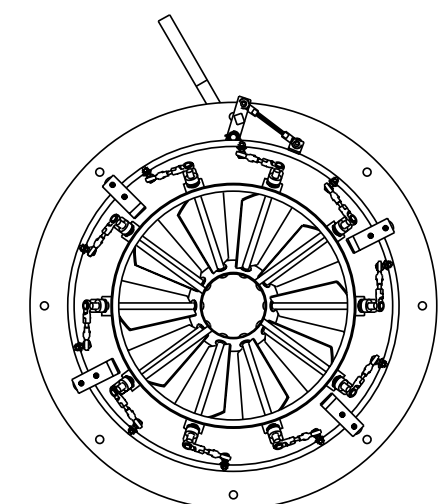
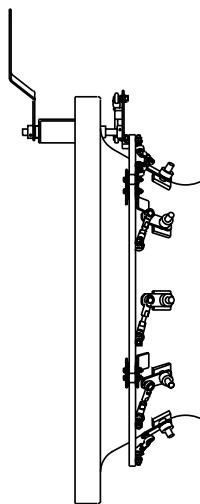
- Check for freedom of operation.
- Check for excessive wear.
- Semi-annually, the linkage should be lubricated with light weight oil, and inspected for wear. Replace if necessary.
- When equipped with actuator, the manufacturer's recommended maintenance procedure should be observed.

Check visually to see that the vane position agrees with the position of the control arm.

External



Nested



NOTE: Only recommended for non-ducted inlets.

If the unit is a double width fan equipped with variable inlet vane control, synchronize both inlet vanes so that they are in the same relative position with respect to the impeller on both inlets).

WARNING

Un-synchronized inlet vanes cause an unbalanced flow between inlets, which results in deficient air performance, unbalanced thrust on the bearings and/or a surge condition in the fan.

Make certain that as variable inlet vanes close they cause entering air to spin in the same direction as the impeller.

LOREN COOK COMPANY

2015 E. DALE STREET
 SPRINGFIELD, MO 65803-4637
 417.869.6474
 www.lorencook.com